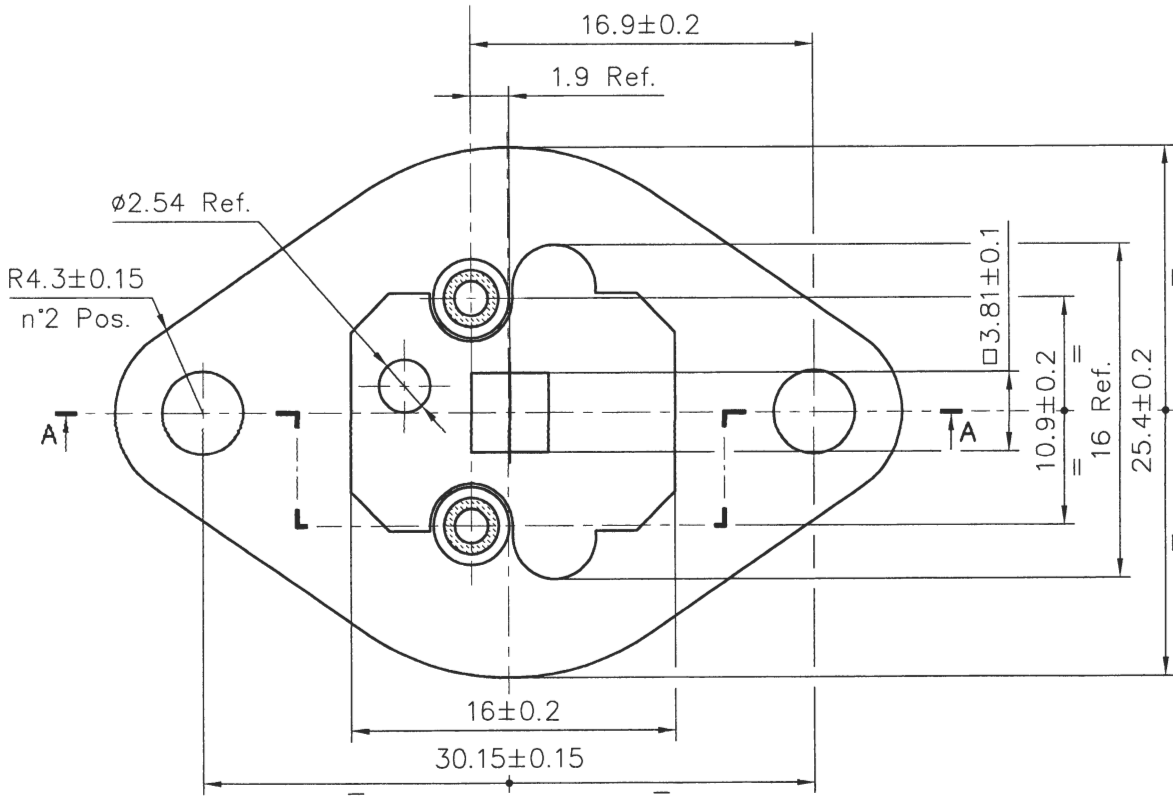
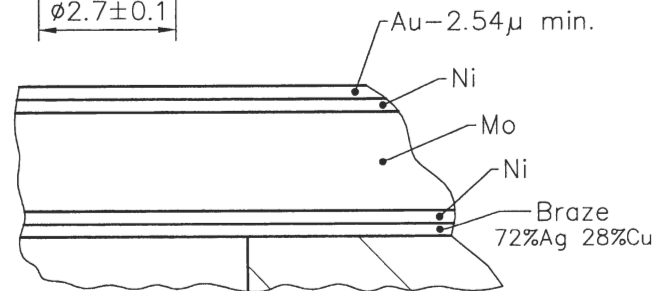
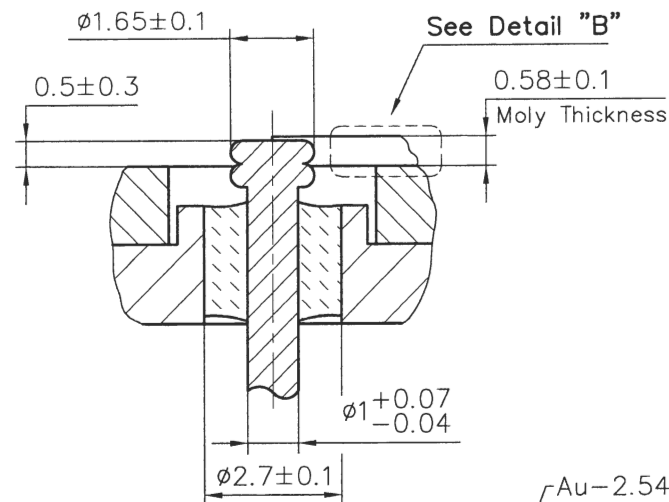
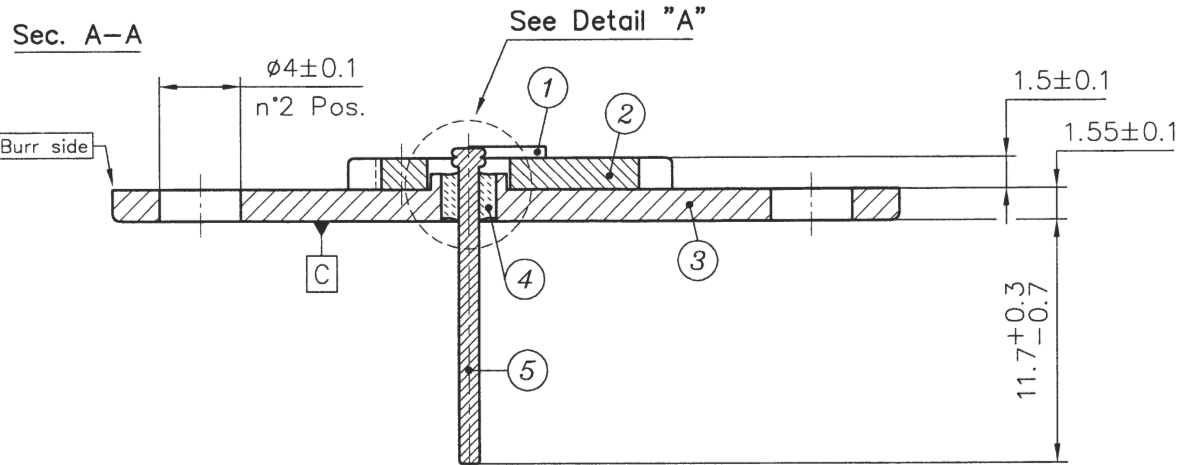


EXTENSION	GLASS COLOR	PLATING
63	Brown	Electrolytic Nickel Sulfamate

P-002TO-10

Detail "A"  
scale 10:1  
n\*2 Pos.



Note / Notes

- |                                                                  |                                                                               |
|------------------------------------------------------------------|-------------------------------------------------------------------------------|
| 1 Placchetta di moly                                             | 1 Molytab                                                                     |
| 2 Dissipatore di calore: rame EN 1652-Cu-OF (pre-nichelato)      | 2 Heat sink: copper EN 1652-Cu-OF (nickel plated prior assembly)              |
| 3 Flangia: acciaio EN 10139-DC04 (pre-nichelata)                 | 3 Flange: steel EN 10139-DC04 (nickel plated prior assembly)                  |
| 4 Vetro compresso                                                | 4 Compression glass seal                                                      |
| 5 Adduttori: lega 52-ASTM F30 o NiFe47-DIN 17745 (pre-nichelati) | 5 Leads: alloy 52-ASTM F30 or NiFe47-DIN 17745 (nickel plated prior assembly) |
- Bavature ammesse 0.1 max
  - Superficie "C" interna al  $\phi 23.62$  deve essere concava 0.04 convessa 0.16
  - Surface "C" to be flat 0.04 concave to 0.16 convex inside diameter 23.62

0	Emission	23-02-2016	5
1			6
2			7
3			8
4			9

Scale	Designer	Chairman	Material	Edition	Sight (METRIC mm)
4:1	Rossi	Soffiantini	See notes	03	A3
Sintermetalglass Srl			General Roughness		
Via Gramsci, 44 - 20090 OPERA (MI)			General tolerances where not specified	Design N'	
Tel.02-57600376-57601274-57601570			ISO 2768-mK	SMG 110.001	
Fax.02-57600924					