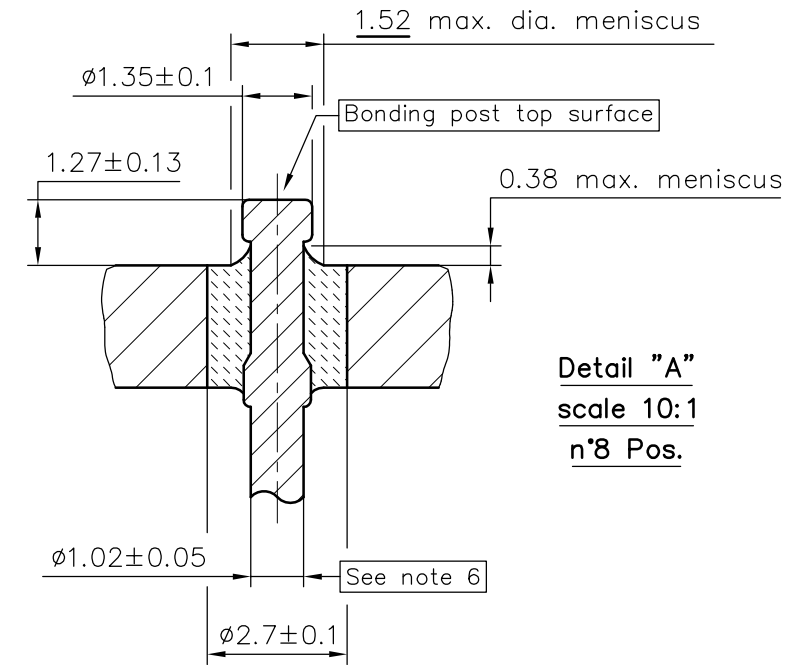
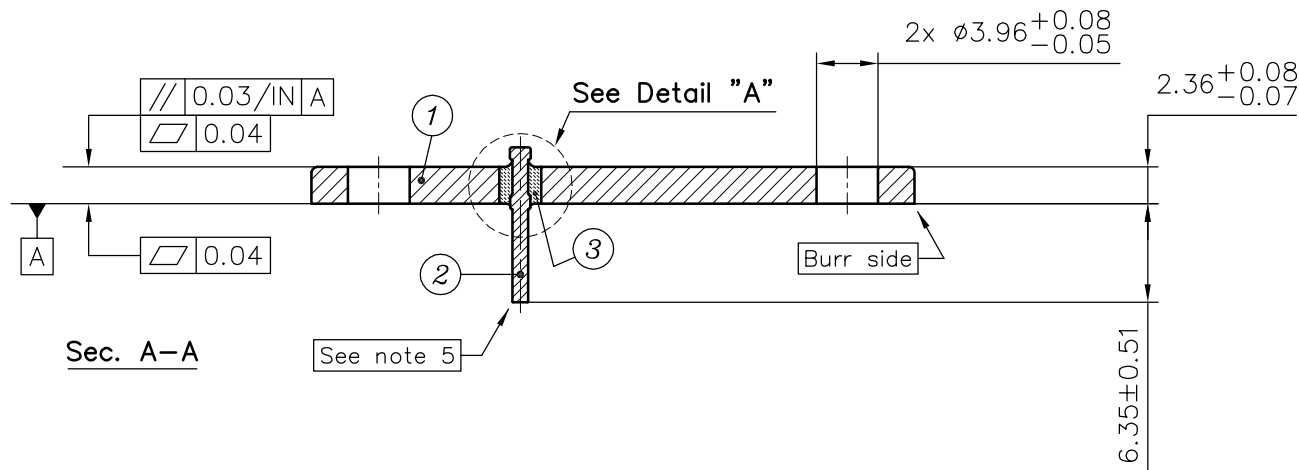
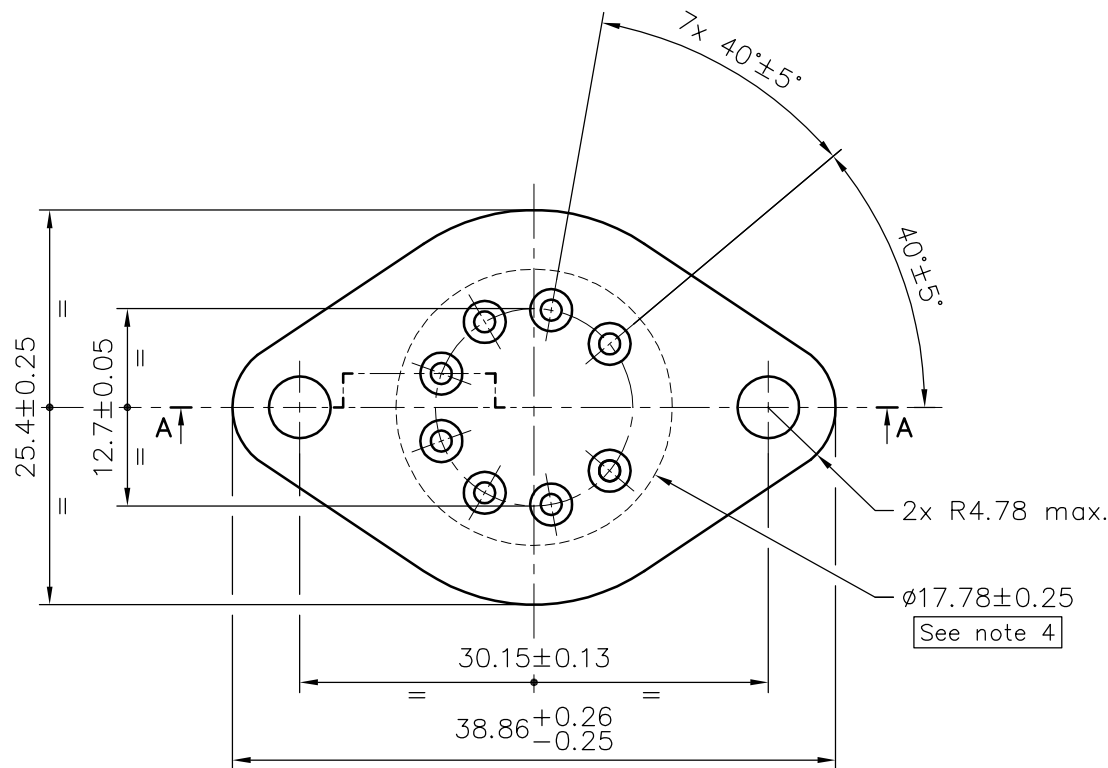


EXTENSION	GLASS COLOR	PLATING
11	Blue	See note 7



**Detail "A"**  
scale 10:1  
n°8 Pos.



Notes:

- 1 Flange: steel EN 10139-DC04
- 2 Leads: ASTM F30-Alloy 52
- 3 Compression glass seal
- 4 Flatness this area: 0.013 tir max.
- 5 For deburr: break sharp edge, 0.05 max. radius.
- 6 Any bent pin shall fall within a 2.54 dia. circle concentric with the embedded end of the pin.
- 7 Finish: 5.08µm minimum electrolytic nickel on header & pins prior to glass sealing, 1.27÷3.18µm electroless nickel over preplate. (Combined thickness not to exceed 11.43µm).

Scale	Chairman	Designer	Material	REVIEWS			Edition	Sight (METRIC mm)
3:1	Soffientini	Rossi	See notes	0	Emission	15-11-19	5	Emission
			General Roughness	1			6	15-11-2019
			General Tolerances where not specified	2			7	Design N°
			ISO 2768-mH	3			8	SMG 100.089
				4			9	

**Sintermetalglass Srl**

Via Gramsci, 44 - 20090 OPERA (MI)  
Tel.02-57600376 Fax.02-57600924