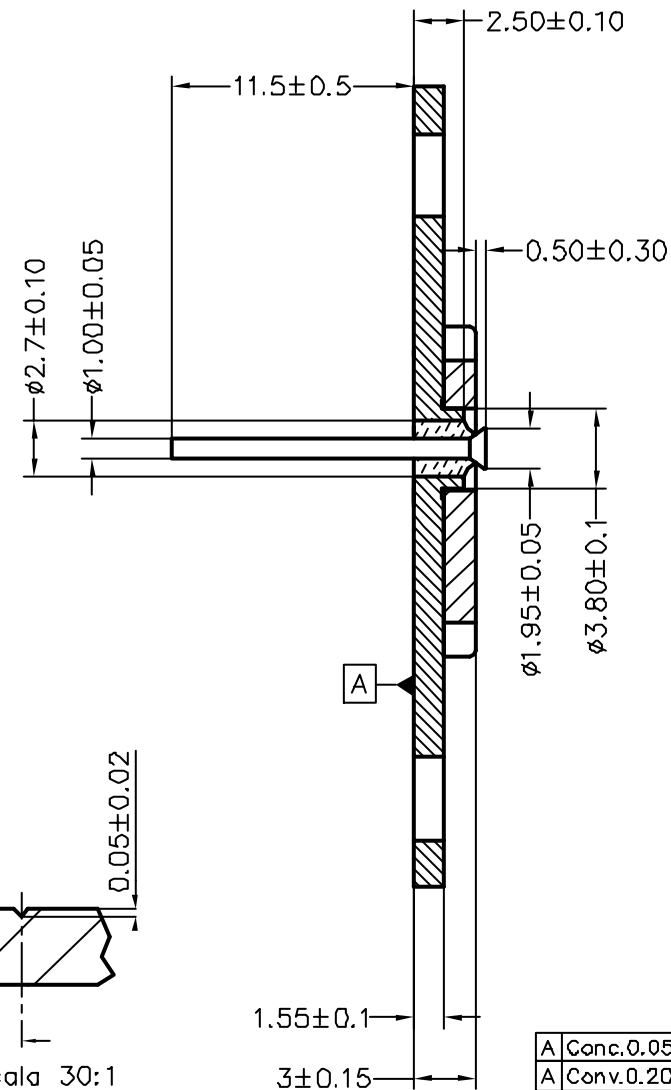
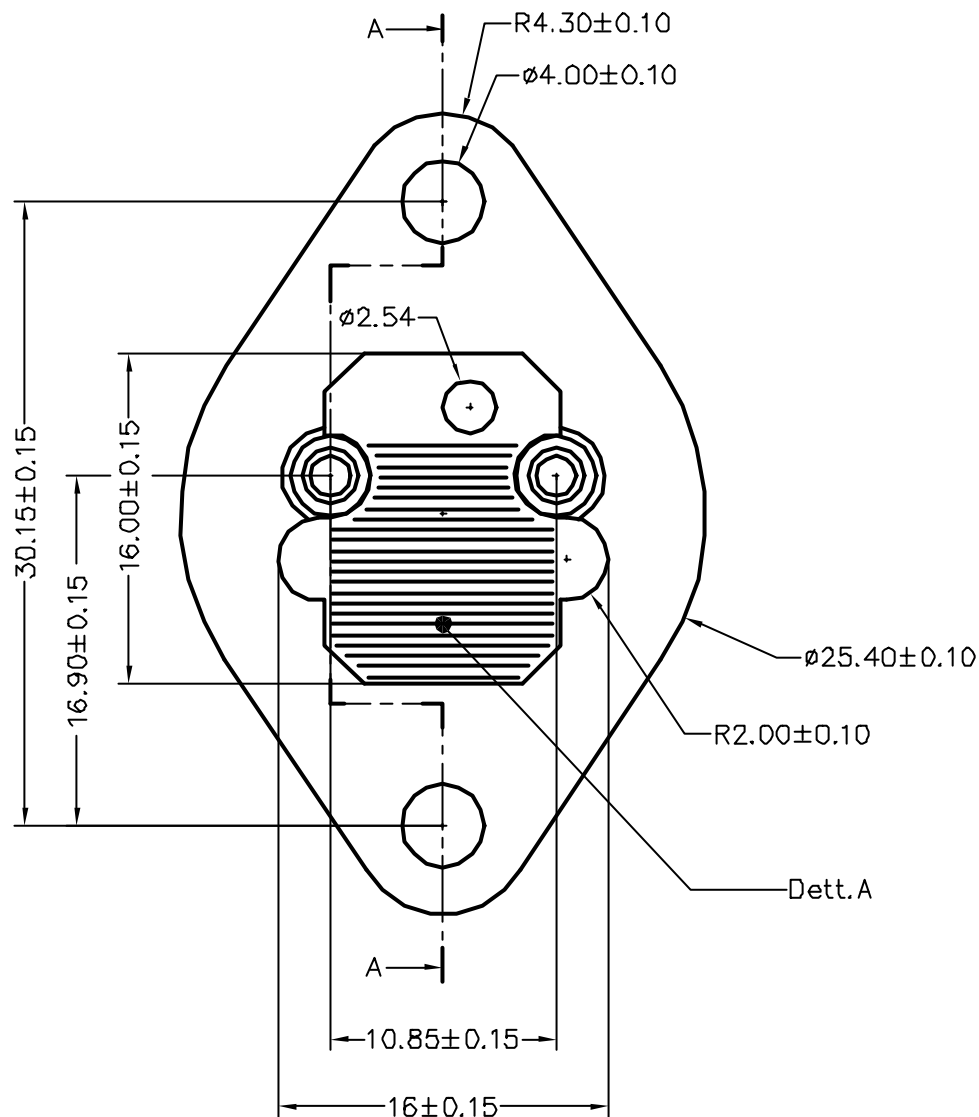


COPIA N°

Sez A-A



Vista da "A" scala 30:1

A	Conc.0.05 Max
A	Conv.0.20 Max

Scala	Dis.	Approv.	Comp.	Materiali	REVISIONI			Edizione	Vista (METRICO mm)
4:1	Zago	Bertelli		Base: Steel Fe P03 Uni 5961 Electrolytic Ni Preplated Heat Sink: Cu O.F.H.C Leads: Copper Cored	EXTENSION	GLASS COLOR	PLATING	01	A4
Sintermetalglass Srl Via Gramsci, 44 - 20090 OPERA (MI) Tel.+39-02-57600378 Fax.+39-02-57600924 Manuel.Zago@sintermetalglass.com					11	Blue	Electroless Nickel 3+6µ	Emissione	
					Talloranze Generali ISO 2768-mK			1 5 2 6 3 7 4 8 5 9	12-02-2001 N° Disegno SMG 100.052