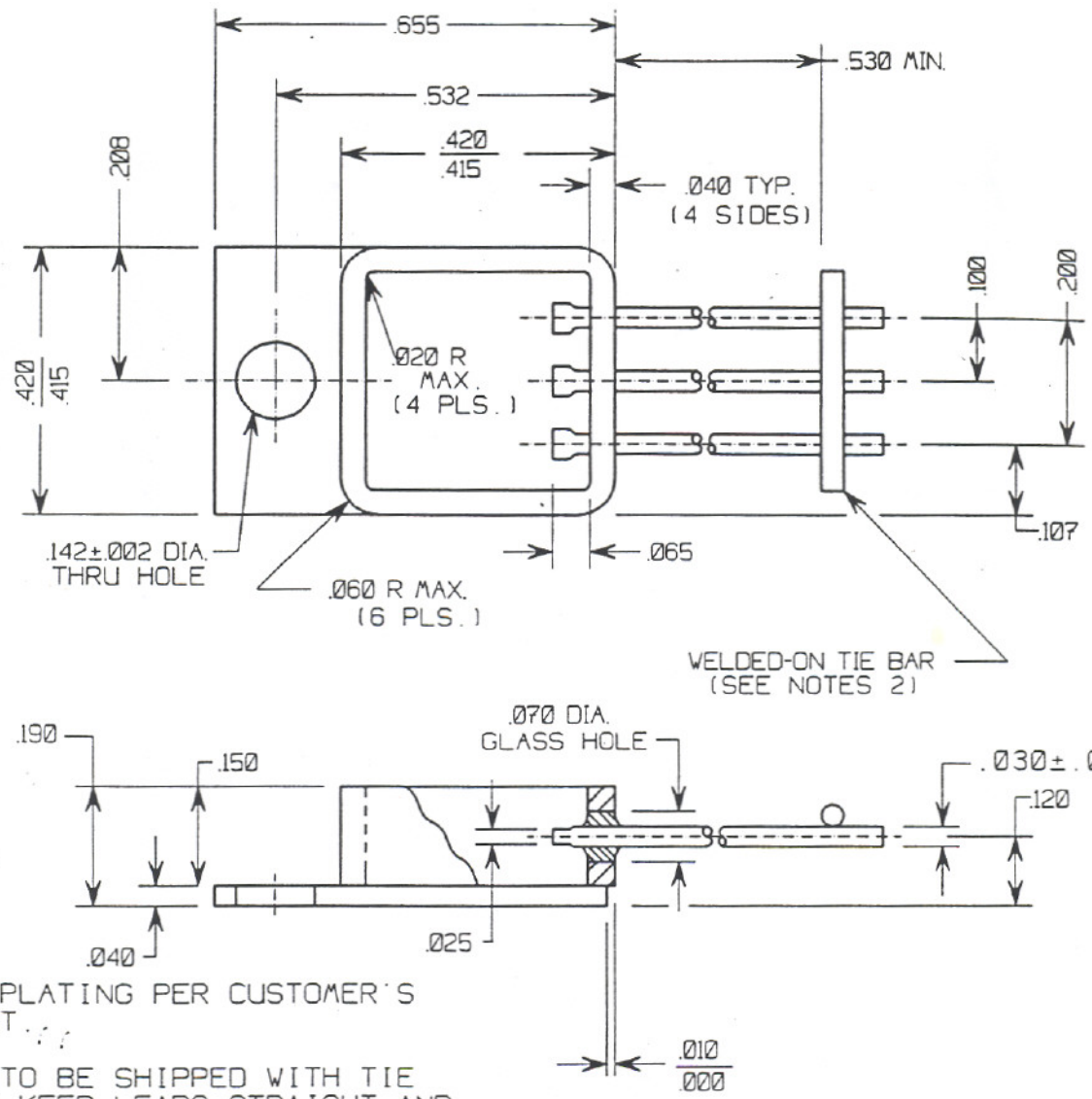


DRAWING NO:  
SEAL-1288-

ENGINEERING APPROVED *MR*



**NOTES:**

1. FINAL PLATING PER CUSTOMER'S REQUEST.
2. PARTS TO BE SHIPPED WITH TIE BAR TO KEEP LEADS STRAIGHT AND TO PREVENT GLASS CRACKING.
3. WHEN REQUESTED, PARTS CAN BE FURNISHED WITHOUT TIE-BAR.
4. ALL TOLERANCES ± .005 UNLESS OTHERWISE SPECIFIED.

F	ADDED NOTES 3 & 4. DELETED ALL .005 TOLS. & REF DIMS.	NS 02-08-96
E	ADDED WELDED TIE BAR TO DRAWING. ADDED NOTE 2	EP 07-22-91
D	CAD REDRAWN	EP 05-20-91
C	.655 ± .005 WAS .650 ± .005 ADDED .010 / .000 DIM ELEVATION.	MR 05-29-89
B	ADDED PART NO TABLE	MR 05-18-89
A	DELETED .118 ± .005 DIM. ADDED .532 ± .005 DIA. .142 ± .002 DIA. WAS .141 ± .002 TITLE WAS TO-220	MR 04-26-89
LET	REVISION	DATE

S-1288-2	ALL THREE PIN WITH GLASS INSULATION.
S-1288-1	CENTER PIN ONLY BRAZED (GROUND) TO FRAME.
<b>PART NO</b>	<b>PARTS SUPPLIED WITH</b>
MATERIAL: 1. BASE-OFHC C <sub>U</sub> CDA-102 2. FRAME-1020 CRS 3. PINS-C <sub>U</sub> CORE 52 ALLOY 4. GLASS-FUSITE "T" OR EQUAL	<b>PLATRONICS-SEALS</b> 320 COLFAX AVENUE CLIFTON, NEW JERSEY 07013
SCALE: 4:1	TITLE: ASSEMBLY GLASS TO METAL SEAL HERMETIC. TO-257
DATE: 01-31-89	DWG NO. SEAL-1288-
DRAWN BY: MR	

THIS DRAWING IS THE PROPERTY OF PLATRONICS-SEALS AND IS NOT TO BE REPRODUCED WITHOUT EXPRESSED WRITTEN CONSENT.