

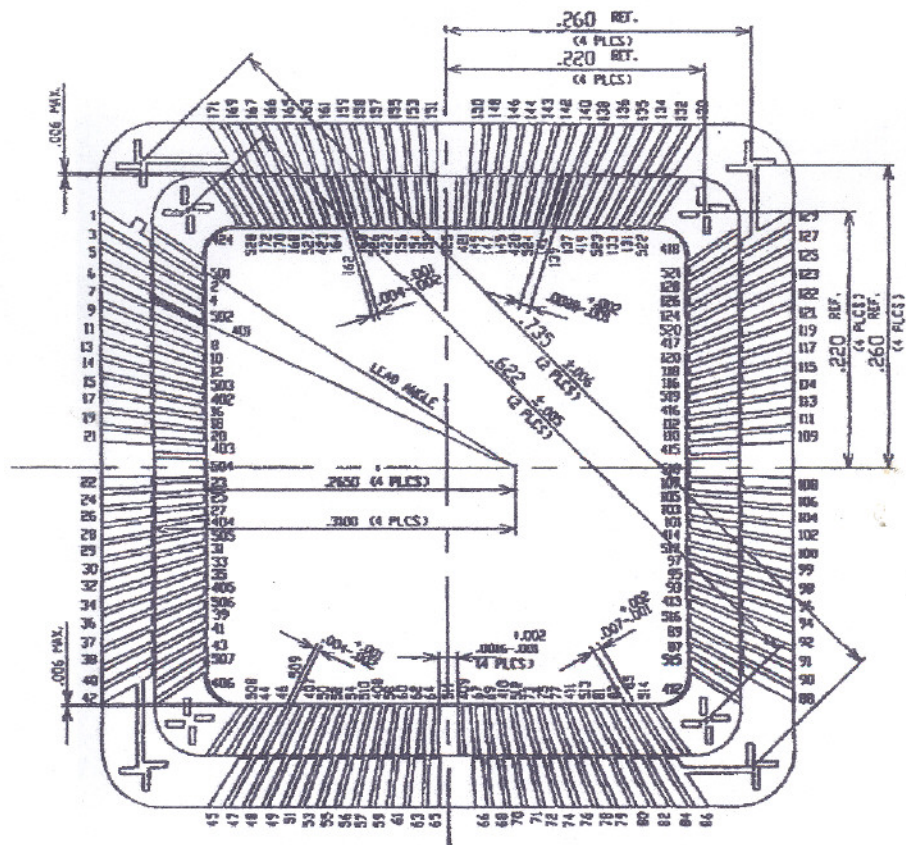
LEAD/BOND INTERCONNECTION TABLE

LEAD	BOND	LEAD	BOND	LEAD	BOND	LEAD	BOND	LEAD	BOND	LEAD	BOND	LEAD	BOND	LEAD	BOND	LEAD	BOND
1	VDD	27	23	30	45	79	69	103	91	131	115	157	137	183	161		
2	VSS	28	24	31	46	80	70	104	92	132	116	158	138	184	162		
3	1	29	25	32	47	81	71	105	93	133	117	159	139	185	163		
4	2	30	26	33	48	82	72	106	94	134	118	160	140	186	164		
5	3	31	27	34	49	83	73	107	95	135	119	161	141	187	165		
6	4	32	28	35	50	84	74	108	96	136	120	162	142	188	166		
7	5	33	29	36	51	85	75	109	97	137	121	163	143	189	167		
8	6	34	30	37	52	86	76	110	98	138	122	164	144	190	168		
9	7	35	31	38	53	87	77	111	99	139	123	165	145	191	169		
10	8	36	32	39	54	88	78	112	100	140	124	166	146	192	170		
11	9	37	33	40	55	89	79	113	101	141	125	167	147	193	171		
12	10	38	34	41	56	90	80	114	102	142	126	168	148	194	172		
13	11	39	35	42	57	91	81	115	103	143	127	169	149	195	173		
14	12	40	36	43	58	92	82	116	104	144	128	170	150	196	174		
15	13	41	37	44	59	93	83	117	105	145	129	171	151	197	175		
16	14	42	38	45	60	94	84	118	106	146	130	172	152	198	176		
17	15	43	39	46	61	95	85	119	107	147	VSS	173	153	199	177		
18	16	44	40	47	62	96	86	120	108	148	VDD	174	154	200	178		
19	17	45	41	48	63	97	VDD	121	VSS	149	VSS	175	155	201	179		
20	18	46	42	49	64	98	VSS	122	VDD	150	130	176	156	202	180		
21	19	47	43	50	65	99	VDD	123	VDD	151	131	177	157	203	181		
22	20	48	VDD	51	VSS	100	VSS	124	110	152	132	178	158	204	182		
23	21	49	VSS	52	VDD	101	VDD	125	111	153	133	179	159	205	183		
24	VDD	50	VDD	53	VDD	102	VDD	126	112	154	134	180	160	206	184		
25	VSS	51	VSS	54	VSS	103	VSS	127	113	155	135	181	161	207	185		
26	22	52	44	55	68	104	90	128	114	156	136	182	162	208	186		

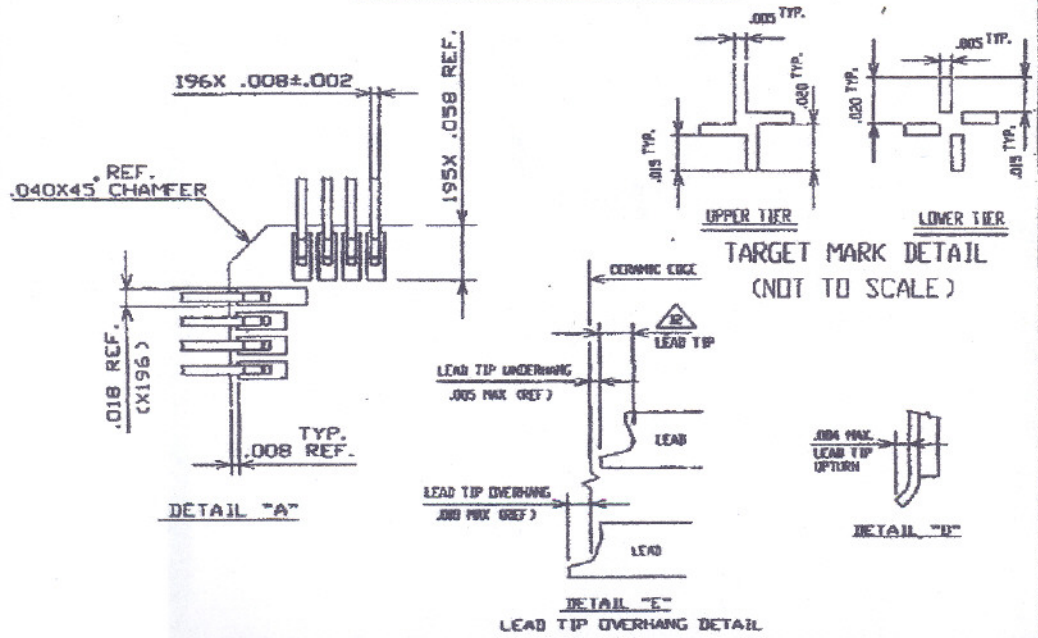
VDD : 40-424  
VSS : 501-528



<small>PRECISION TAPING NOTE: This drawing was made on this equipment with equipment by and for the exclusive property of American Taping Corporation, Inc. and is to be used only for the production of the product specified hereon. Any further use of this drawing without the written consent of American Taping Corporation, Inc. is prohibited.</small>			
<b>REVISED</b>			
REV	DATE	BY	APP'D
A	10-5-92		
B	1-15-93		



**WIRE BONDING DETAIL**

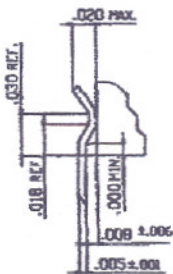
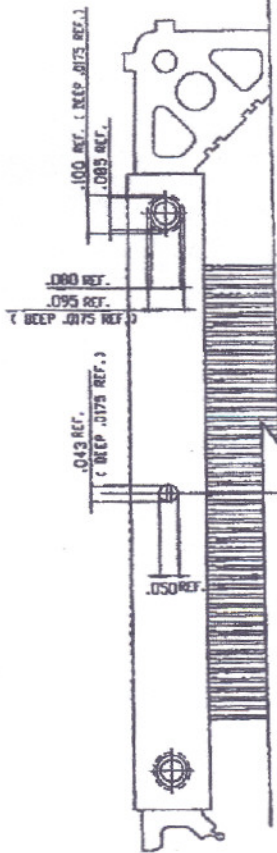
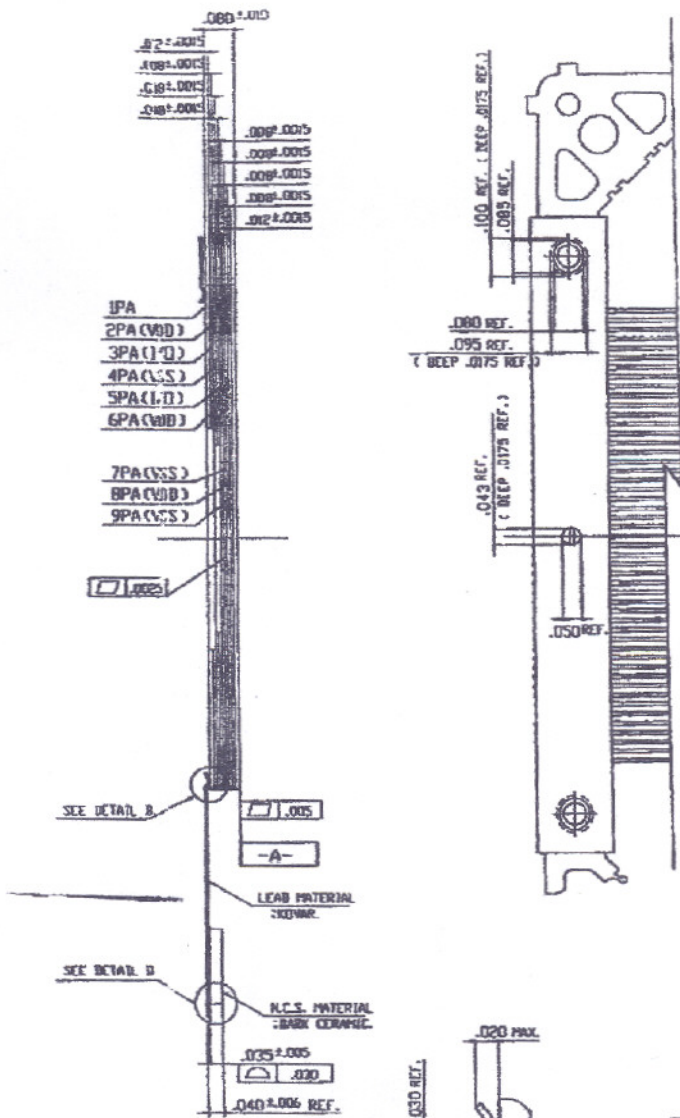


**TARGET MARK DETAIL  
(NOT TO SCALE)**

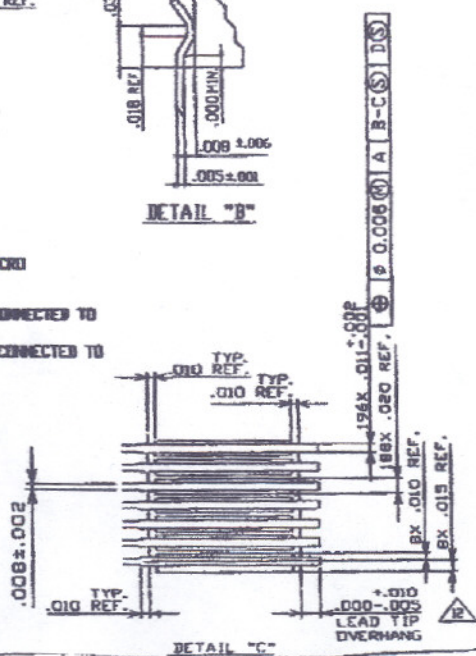
**LEAD TIP OVERHANG DETAIL**

Qty	Part or Identifying No.	Code Ident	Description	Material or Note	Specification or Reference Design	Rev No.
List of Materials or Parts List						
			ASBCE			
			Draw	WBM	10-5-92	
			Check		10-5-92	
Next Assy	Qty	Approved	Date			
Controlling Units Inches		Approved	Date			

**196 LEAD COFF  
.010" B/A CAVITY**



DETAIL "B"



DETAIL "C"

NOTES

1. ALL EXPOSED METALLIZED AREA SHALL BE GOLD PLATED 60 MICRO INCHES MIN. THK. OVER NICKEL PLATED UNLESS OTHERWISE SPECIFIED PURCHASE ORDER.
2. ALL "V" PADS ARE CONNECTED TO POWER PLANE WHICH IS CONNECTED TO EXTERNAL LEAD NO.1,2,4,8,50,75,97,99, 124,146,148,171,195
3. ALL "S" PADS ARE CONNECTED TO GROUND PLANE WHICH IS CONNECTED TO EXTERNAL LEAD NO.2,25,49,51,74,98,100,123,147,149,172,196
4. PAD "A", "B", "C", AND "D" CONNECTED POWER PLANE.
5. PAD "A", "B", "C", AND "D" CONNECTED GROUND PLANE.
6. SEAL AREA SHALL BE CONNECTED TO "VSS"
7. DIE ATTACH AREA SHALL BE ISOLATED FROM ANY LEADS. (ZERO GROUND)
8. LEAD PULL STRENGTH TO BE 0.5 LBS MIN. PERPENDICULAR PULL.
9. # INDICATES DIMENSION OF THE TOP LAYER.
10. EQUIVALENT TO KYOCERA SMD NO. DC-F2929C-A
11. \_\_\_\_\_

FOR MEASUREMENT PURPOSES, LEAD TIP IS DEFINED BY ANY TERMINATING FEATURE LYING WITHIN THIS AREA.