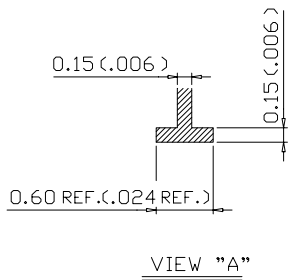


- NOTES:
1. ALL EXPOSED METAL AND METALLIZED AREAS SHALL BE GOLD PLATED 1.5μm (60μ") MIN. THICKNESS OVER NICKEL PLATED.
  2. SEAL AREA AND DIE ATTACH PAD SHALL BE ISOLATED FROM ANY LEADS. (ZERO GROUND)
  3. \*INDICATES DIMENSIONS OF THE TOP SURFACE.



MODIFICATIONS					NAME		TOLERANCES:		DRAWN		CHECKED		APPROVED		DATE	
					28 LEAD S.O. PACKAGE		UNLESS OTHERWISE SPECIFIED		S.T.		A.Y.		K.T.		Y.S.	
CHANGE					SCALE		MATERIAL		DRAWING NO.		SHEET		POB-28F			
					10/1		KYOCERA A-440		PB-F88154		1		KYOCERA CORPORATION		KYOTO JAPAN	
					DATE		THIRD ANGLE PROJECTION		DRAWING NO.		SHEET		PB-F88154			
					DRAWN		KYOCERA		DRAWING NO.		SHEET		PB-F88154			
					CHECKED		KYOCERA CORPORATION		DRAWING NO.		SHEET		PB-F88154			
					APPROVED		KYOTO JAPAN		DRAWING NO.		SHEET		PB-F88154			