

16 Lead Cerdip Baseframe Assembly

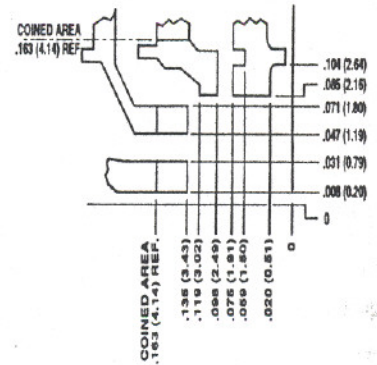
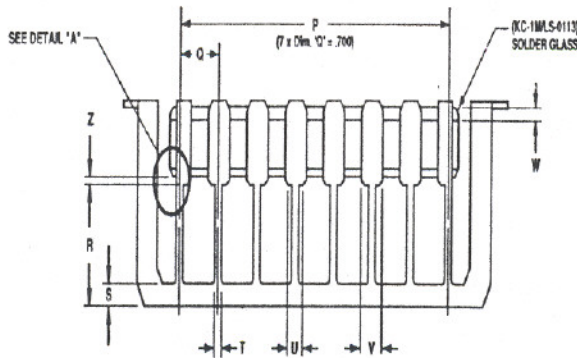
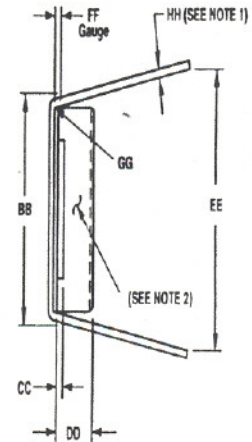
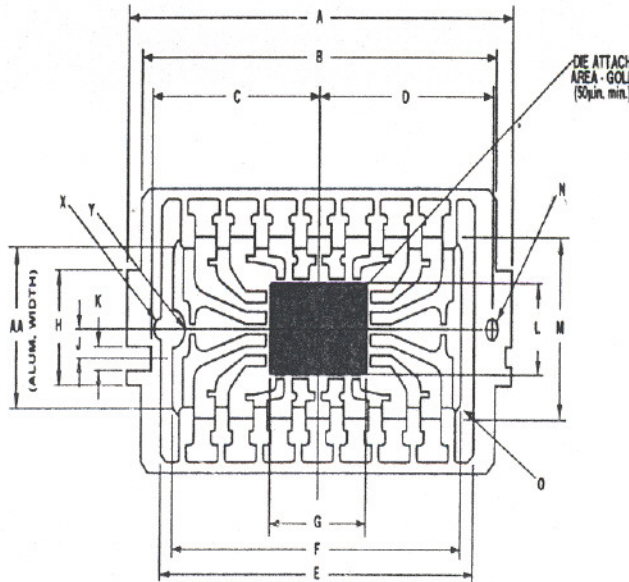
SPEC MB2155-
NO:

PAGE: 2

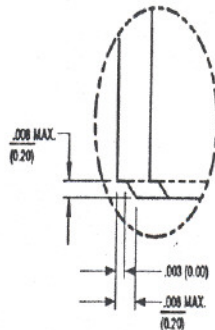
VENDOR

REV. NO.	REVISIONS	DATE	APPD.
-	INIT PER SCN # 19530	03/22/85	

	DIMENSIONS				NOTES
	INCHES		MILLIMETERS		
	MIN.	MAX.	MIN.	MAX.	
A	.942	.948	23.93	24.08	
B	.887	.893	22.53	22.68	
C	.418	.424	10.62	10.77	
D	.434	.440	11.02	11.18	
E	.803	.809	20.40	20.55	
F	.753	.767	19.13	19.48	
G	.247	.253	6.27	6.43	
H	.193	.199	4.90	5.05	
J	.047	.053	1.19	1.35	
K	.031	.037	0.79	0.94	
L	.157	.163	3.99	4.14	
M	.255	.291	6.48	7.39	
N	.031	.037	0.79	0.94	± DIA.
O	.029	.040	0.51	1.02	R. (4 PLCS)
P	.095	.105	2.41	2.67	
Q	.098	.102	2.48	2.59	TYP.
R	.190	.200	4.83	5.08	
S	.037	.043	0.94	1.09	
T	.016	.020	0.41	0.51	TYP.
U	.037	.043	0.94	1.09	TYP.
Y	.053	.059	1.35	1.50	TYP.
W	.010	.016	0.25	0.41	THICKNESS
X	.014	.020	0.36	0.51	RAD.
Y	.020	.030	0.51	0.76	RAD.
Z	.015	-	0.38	-	
AA	.340 REF		.610 REF		
BB	.310	.318	7.87	8.08	
CC	.012	.018	0.30	0.46	
DD	.075	.080	1.91	2.03	
EE	.365	.395	9.27	10.03	
FF	.010	.020	0.25	0.51	
GG	-	.012	-	0.30	RAD.
HH	.009	.011	0.23	0.28	



- NOTES:
1. LEAD FRAME MATERIAL SHALL BE ALLOY 42.
2. CERAMIC BASE MATERIAL SHALL BE AL₂O₃ (ALUMINA) - 90% MIN. (BLACK).



DETAIL 'A'

UNLESS OTHERWISE SPECIFIED ALL DIMENSIONS ARE IN INCHES

MATERIAL	DRAWN	RJV	DATE
1. ALUMINUM PLATING SHALL BE 200-400 µm MIN.	APPD		DATE
	TOLERANCES (U.O.S.)		
	XX ± .01		
	XXX ± .003		
	FRACTIONS ± 1/64		
	ANGLES ± 1/2°		
FINISH	SURFACE QUALITY ✓		
DO NOT SCALE THIS DWG			