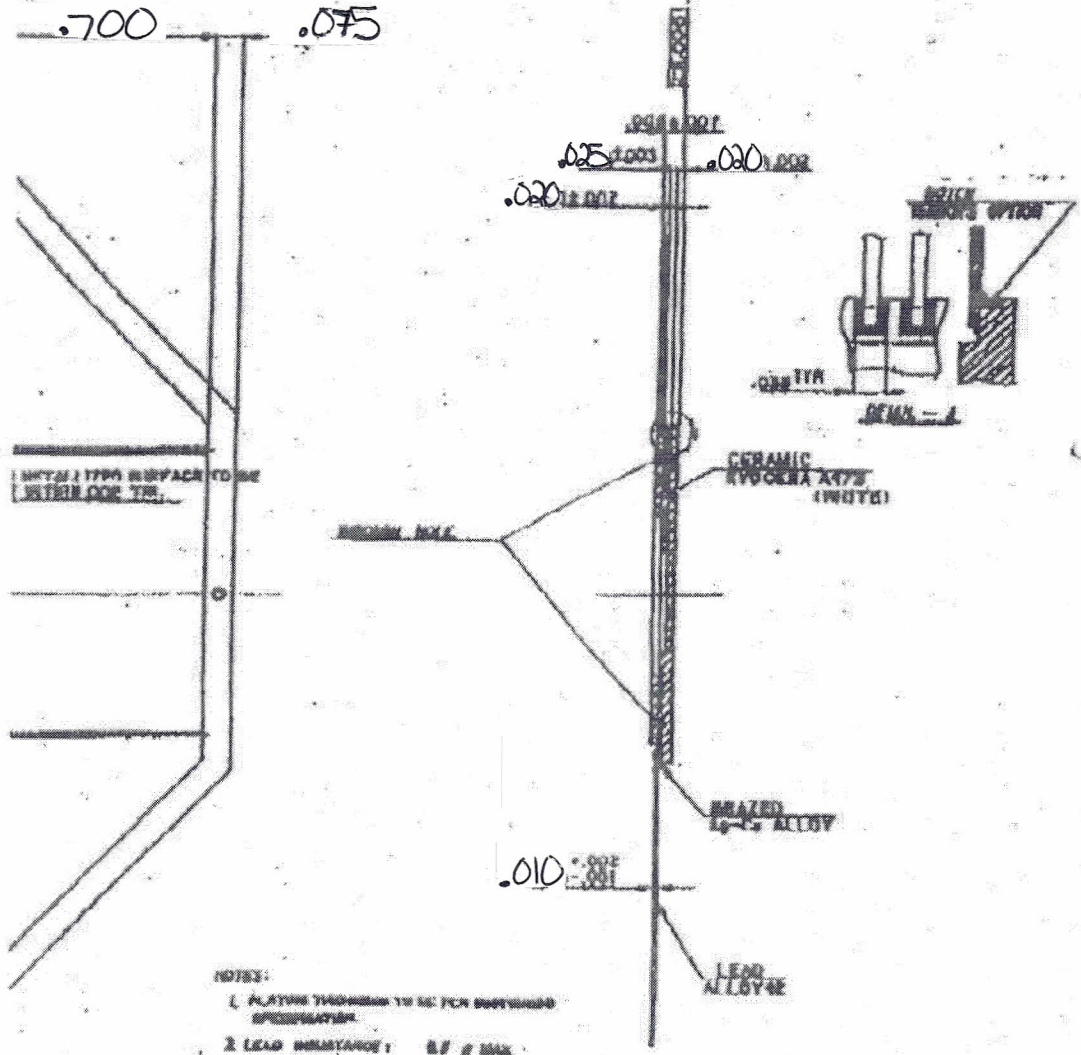


NOTES:

1. PLAYS THROUGH TO NO WITH OPTION
2. LEAD RESISTANCE: 0.5 μ MAX.
3. DRILL AREA TO BE DIMENSIONED
4. THE ATTACH AREA TO BE DIMENSIONED
5. SEAL WITH AND THE ATTACH PVD TO BE IN FROM AND FIN.

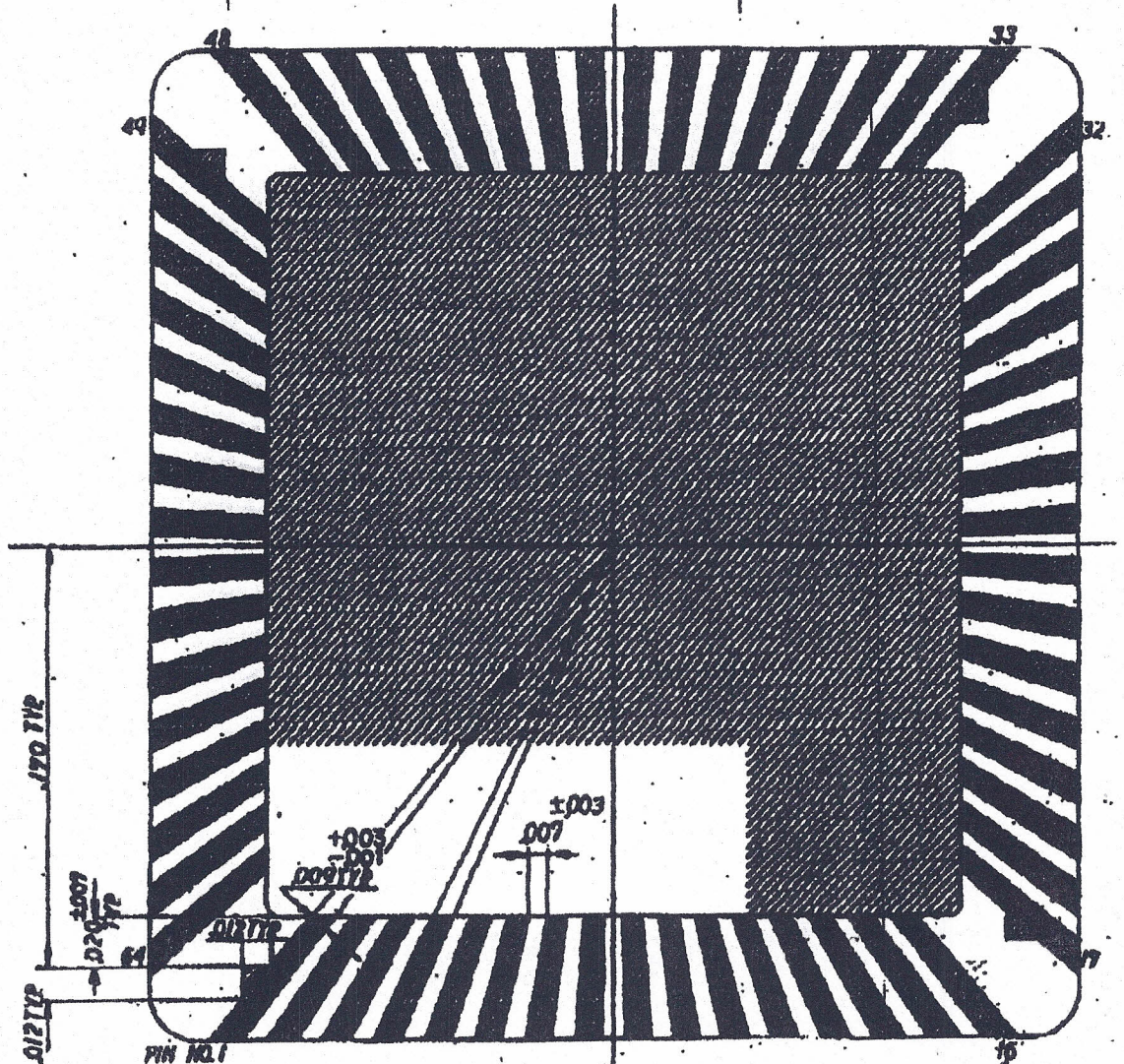
DATE						
BY						
CHKD						
APP'D						
REV						
NO						
DATE						
BY						
CHKD						
APP'D						
REV						
NO						
DATE						
BY						
CHKD						
APP'D						
REV						
NO						
DATE						
BY						
CHKD						
APP'D						
REV						
NO						
DATE						
BY						
CHKD						
APP'D						
REV						
NO						
DATE						
BY						
CHKD						
APP'D						
REV						
NO						
DATE						
BY						
CHKD						
APP'D						
REV						
NO						
DATE						
BY						
CHKD						
APP'D						
REV						
NO						
DATE						
BY						
CHKD						
APP'D						
REV						
NO						
DATE						
BY						
CHKD						
APP'D						
REV						
NO						
DATE						
BY						
CHKD						
APP'D						
REV						
NO						
DATE						
BY						
CHKD						
APP'D						
REV						
NO						
DATE						
BY						
CHKD						
APP'D						
REV						
NO						
DATE						
BY						
CHKD						
APP'D						
REV						
NO						
DATE						
BY						
CHKD						
APP'D						
REV						
NO						
DATE						
BY						
CHKD						
APP'D						
REV						
NO						
DATE						
BY						
CHKD						
APP'D						
REV						
NO						
DATE						
BY						
CHKD						
APP'D						
REV						
NO						
DATE						
BY						
CHKD						
APP'D						
REV						
NO						
DATE						
BY						
CHKD						
APP'D						
REV						
NO						
DATE						
BY						
CHKD						
APP'D						
REV						
NO						
DATE						
BY						
CHKD						
APP'D						
REV						
NO						
DATE						
BY						
CHKD						
APP'D						
REV						
NO						
DATE						
BY						
CHKD						
APP'D						
REV						
NO						
DATE						
BY						
CHKD						
APP'D						
REV						
NO						
DATE						
BY						
CHKD						
APP'D						
REV						
NO						
DATE						
BY						
CHKD						
APP'D						
REV						
NO						
DATE						
BY						
CHKD						
APP'D						
REV						
NO						
DATE						
BY						
CHKD						
APP'D						
REV						
NO						
DATE						
BY						
CHKD						
APP'D						
REV						
NO						
DATE						
BY						
CHKD						
APP'D						
REV						
NO						
DATE						
BY						
CHKD						
APP'D						
REV						
NO						
DATE						
BY						
CHKD						
APP'D						
REV						
NO						
DATE						
BY						
CHKD						
APP'D						
REV						
NO						
DATE						
BY						
CHKD						
APP'D						
REV						
NO						
DATE						
BY						
CHKD						
APP'D						
REV						
NO						
DATE						
BY						
CHKD						
APP'D						
REV						
NO						
DATE						
BY						
CHKD						
APP'D						
REV						
NO						
DATE						
BY						
CHKD						
APP'D						
REV						
NO						
DATE						
BY						
CHKD						
APP'D						
REV						
NO						
DATE						
BY						
CHKD						
APP'D						
REV						
NO						
DATE						
BY						
CHKD						
APP'D						
REV						
NO						
DATE						
BY						
CHKD						
APP'D						
REV						
NO						
DATE						
BY						
CHKD						
APP'D						
REV						
NO						
DATE						
BY						
CHKD						
APP'D						



TYP.
 .002
 TYP.

- NOTES:
1. PLATING THICKNESS TO BE FOR BUSHING SPECIFICATION.
 2. LEAD DIMENSIONS: .85 ± .005.
 3. SEAL AREA TO BE BRAZED.
 4. SEE ATTACH AREA TO BE BRAZED.
 5. SEAL PINS AND DIE ATTACH PINS TO BE BLAZED FROM AMT PINS.

				01 LEAD FLAT PACKAGE REASSEMBLY ALL ASSEMBLY		1.000		1000	
DATE	PLANNED	ISSUED	APPROVED					RD. 889582	



BONDING PATTERN

				TITLE: 64 LEAD FLAT PACKAGE SCALE: 20:1 MATERIAL: HARUAL		FOR REVISION: (Indicate revision and date)
CHANGE	DATE	ORANGE	CHECKED	APPROVED	KYOCERA CORPORATION	
					KYOTO JAPAN	