

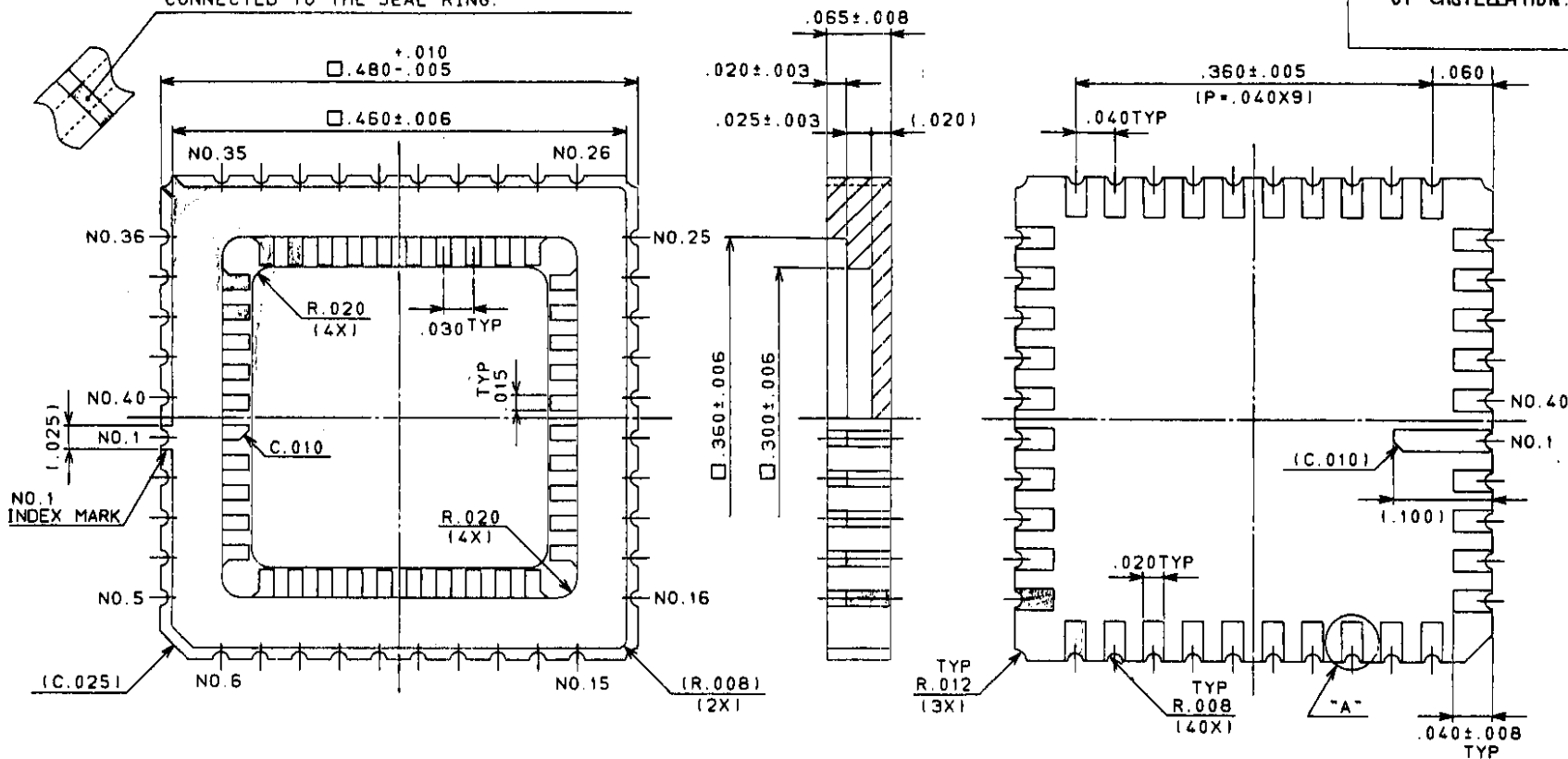
NTK

TECHNICAL CERAMICS

LATEST REVISION'S DESCRIPTION

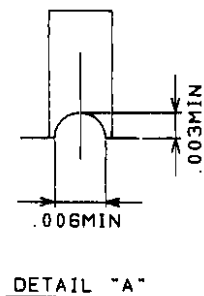
A ADD. DEPTH AND OPENING DIM. OF CASTELLATION.

THIS METALLIZATION TO BE ELECTRICALLY CONNECTED TO THE SEAL RING.



OPEN-TOOLED

- NOTES: 1. GOLD PLATE 60μ INCHES MIN OVER 100μ INCHES MIN NICKEL.
 2. NO LEAD TO BE ELECTRICALLY CONNECTED TO THE DIE ATTACH PAD. SEAL RING ISOLATED.



| | | | | | |
|-----------------------------------|------------|---------------|-------------|--------------------------|-------------|
| 3 | | | | | |
| 2 | | | | A RE DRAWING | NOV-12-1982 |
| 1 | CERAMIC | BLACK ALUMINA | | NEW DRAWING | MAY-22-1986 |
| Item | No. in QTY | Material | Description | Rev. | Description |
| UNLESS OTHERWISE SPECIFIED | | | DRAWN | | |
| TOLERANCES: $\pm 1\%$ | | | NAGAI | | |
| N. L. T. 3 DECIMALS, BY $\pm .01$ | | | CHECKED | | |
| 3 DECIMALS, BY $\pm .005$ | | | | | |
| CUSTOMER | APPROVED | | J.W. | NTK TECHNICAL CERAMICS | |
| DWG NO. | UNIT | | INCH | NGK SPARK PLUG CO., LTD. | |
| | SCALE | | | TITLE | |
| | | | | 40 LEAD CHIP CARRIER | |
| | | | | DWG NO. IRK40F1-138E | |
| | | | | SIZE A-2 (C) | |

MODIFIED DWG NO.

PART NO. SHEET OF M.H