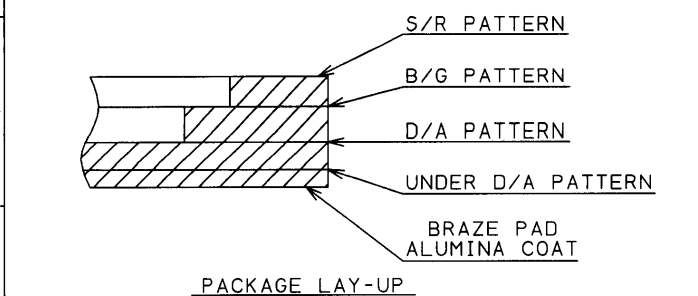
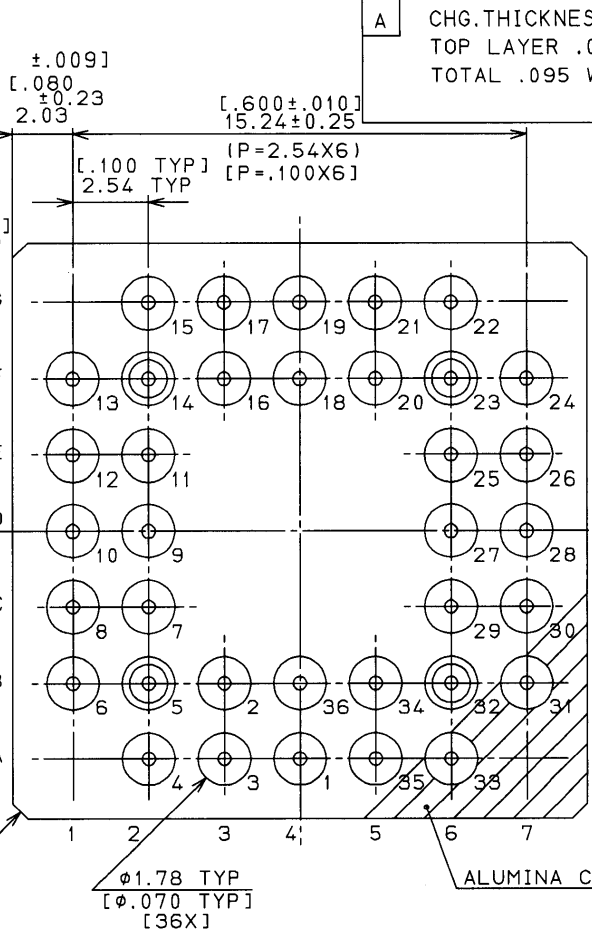
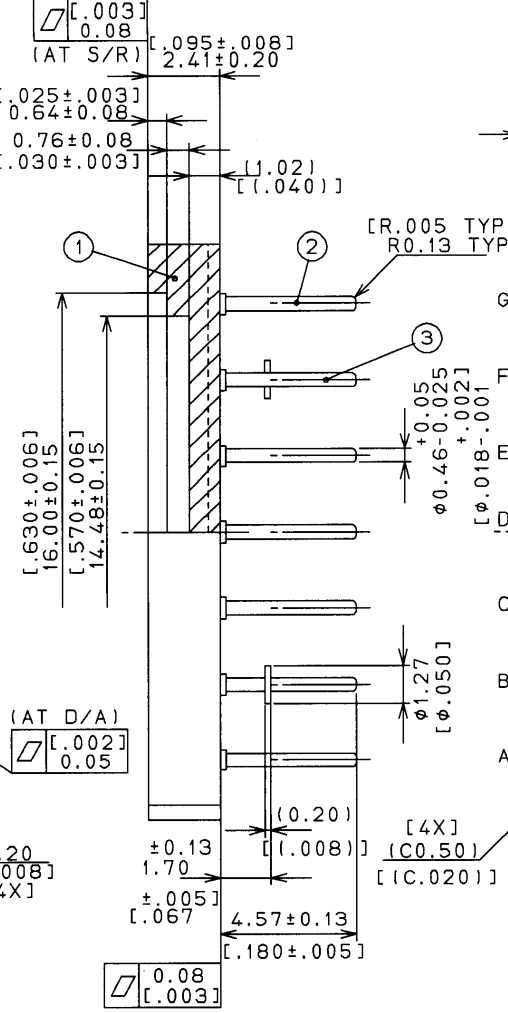
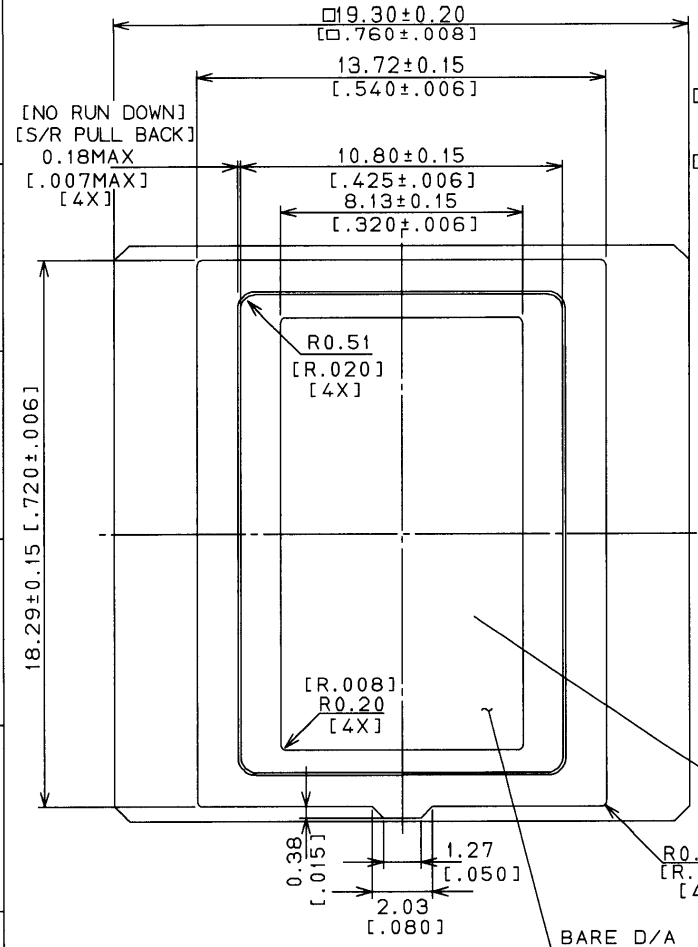


A	CHG.THICKNESS TOP LAYER .025 WAS .030 TOTAL .095 WAS .100
---	---



- NOTES:
- GOLD PLATING 2.54μm MIN OVER 1.27~8.89μm NICKEL. [50~350μ INCHES]
  - LEAD RESISTANCE: 800mΩ MAX.
  - SEAL RING SHALL BE ELECTRICALLY ISOLATED.
  - PIN NO.1,2,3,34 SHALL BE ELECTRICALLY ISOLATED.
  - NTK SPEC YS-1010 SHALL APPLY.

REQUIRED TO MODIFY

③	STAND OFF PIN	ALLOY42				
②	PIN	ALLOY42		A	RE DRAWING	MAR.-31-1992
①	CERAMIC	BLACK ALUMINA		φ	NEW DRAWING	FEB.-19-1992
Item	Name	Material	Description	Rev.	Description	Date
UNLESS OTHERWISE SPECIFIED TOLERANCES: ± 1%			DRAWN	C.MATSUURA	NTK	
N. L. T. 1 DECIMALS X.X ±0.25 2 DECIMALS X.XX ±0.13			CHECKED	N.NAKAYAMA	NGK SPARK PLUG CO., LTD.	
CUSTOMER			APPROVED	T.NOMURA	TITLE (LARGE CAVITY SIZE) 36 PIN GRID ARRAY	
DWG NO.			UNIT	MM [INCH]	DWG NO.	
			SCALE		IPK36F1-8907A	

MODIFIED DWG NO.	
------------------	--

