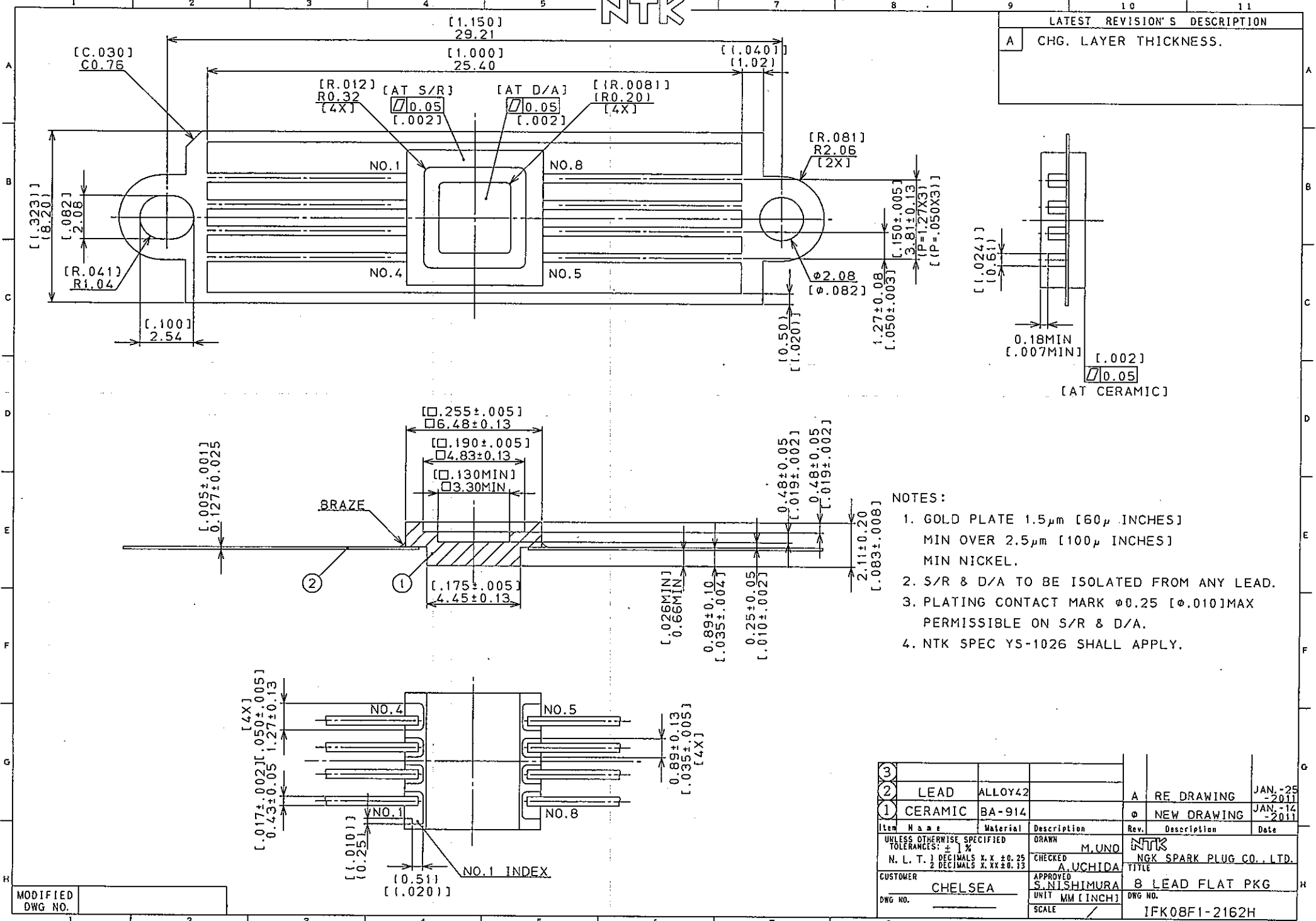


NTK

LATEST REVISION'S DESCRIPTION	
A	CHG. LAYER THICKNESS.



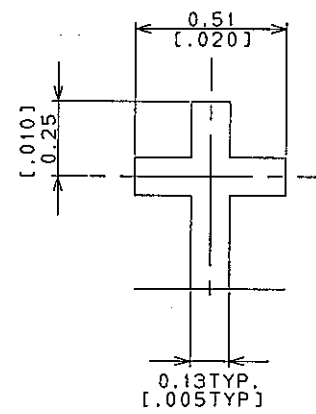
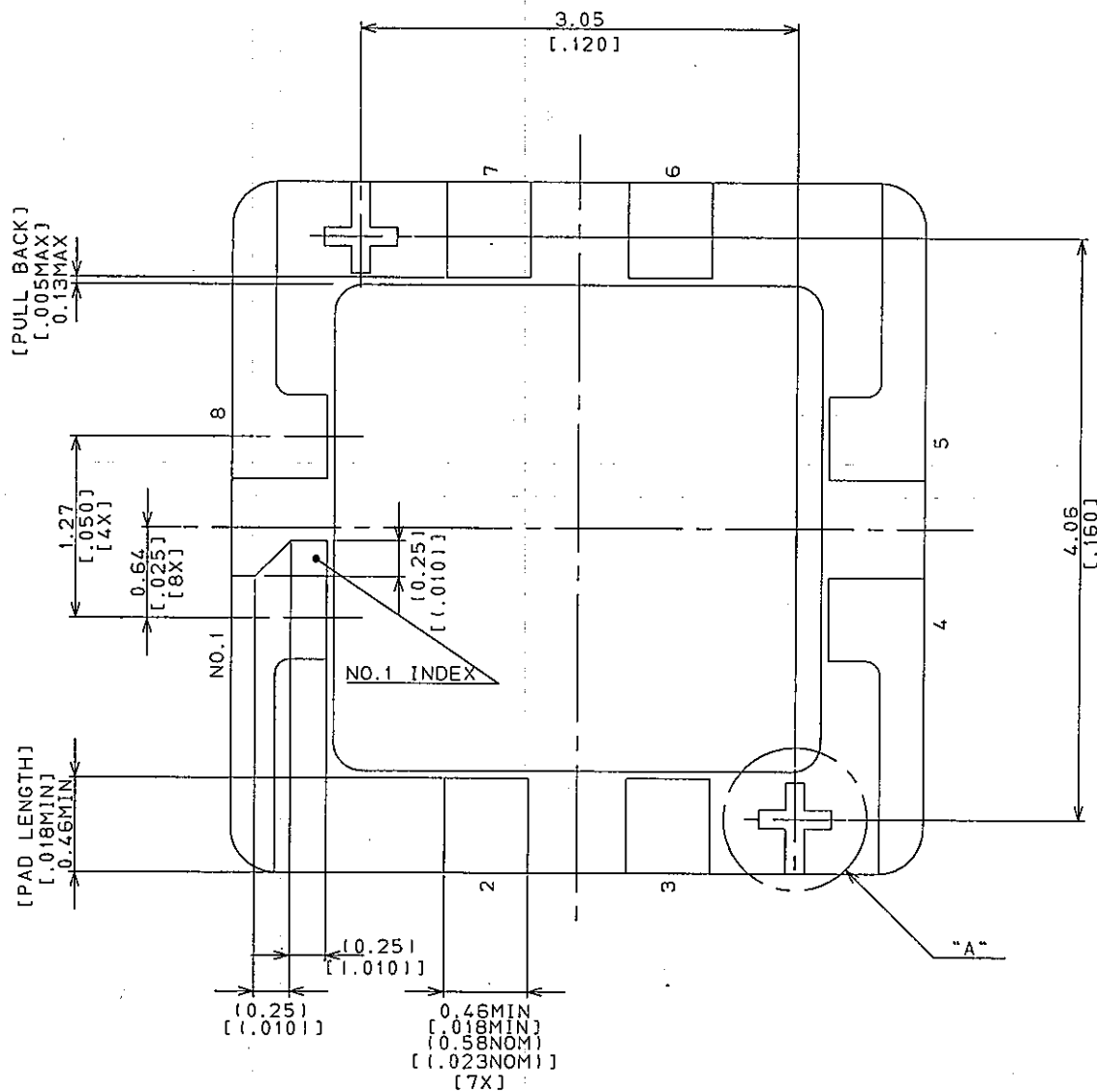
NOTES:

1. GOLD PLATE 1.5μm [60μ INCHES] MIN OVER 2.5μm [100μ INCHES] MIN NICKEL.
2. S/R & D/A TO BE ISOLATED FROM ANY LEAD.
3. PLATING CONTACT MARK φ0.25 [φ.010]MAX PERMISSIBLE ON S/R & D/A.
4. NTK SPEC YS-1026 SHALL APPLY.

3					
2	LEAD	ALLOY42		A	RE DRAWING
1	CERAMIC	BA-914		φ	NEW DRAWING
Item Name	Material	Description	Rev.	Description	Date
UNLESS OTHERWISE SPECIFIED TOLERANCES: ± 1%					
N. L. T. 3 DECIMALS X.X ±0.25					
2 DECIMALS X.XX ±0.13					
CUSTOMER	APPROVED	TITLE			
CHELSEA	S. NISHIMURA	8 LEAD FLAT PKG			
DWG NO.	UNIT	MM [INCH]	DWG NO.		
	SCALE	/	IFK08F1-2162H		

MODIFIED DWG NO.

A SEE SHEET 1 OF 2.



B/G PADS DETAIL

DETAIL "A"

MODIFIED
DWG NO.

UNLESS OTHERWISE SPECIFIED
TOLERANCES: ± 1%
N. L. T. 1 DECIMALS X.X ±0.25
2 DECIMALS X.XX ±0.13
CUSTOMER: CHELSEA
DWG NO.

DRAWN: M. UNO
CHECKED: A. UCHIDA
APPROVED: S. NISHIMURA
UNIT: MM [INCH]
SCALE: /

Rev.	Description	Date
A	RE DRAWING	JAN.-25-2011
φ	NEW DRAWING	JAN.-14-2011

NTK
NGK SPARK PLUG CO., LTD.
TITLE: B/G PADS DETAIL
DWG NO.: IFK08F1-2162H