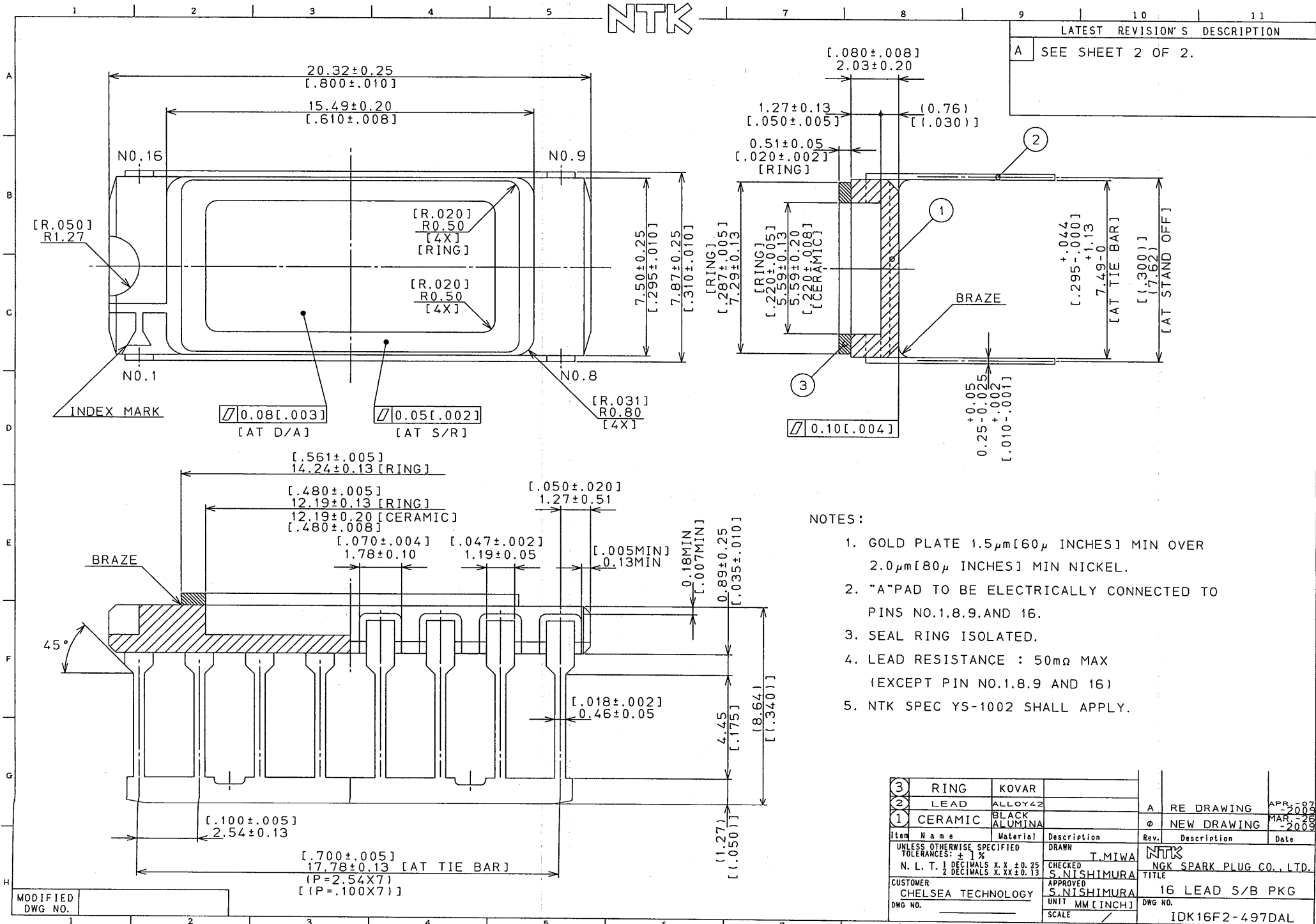


A SEE SHEET 2 OF 2.



NOTES:

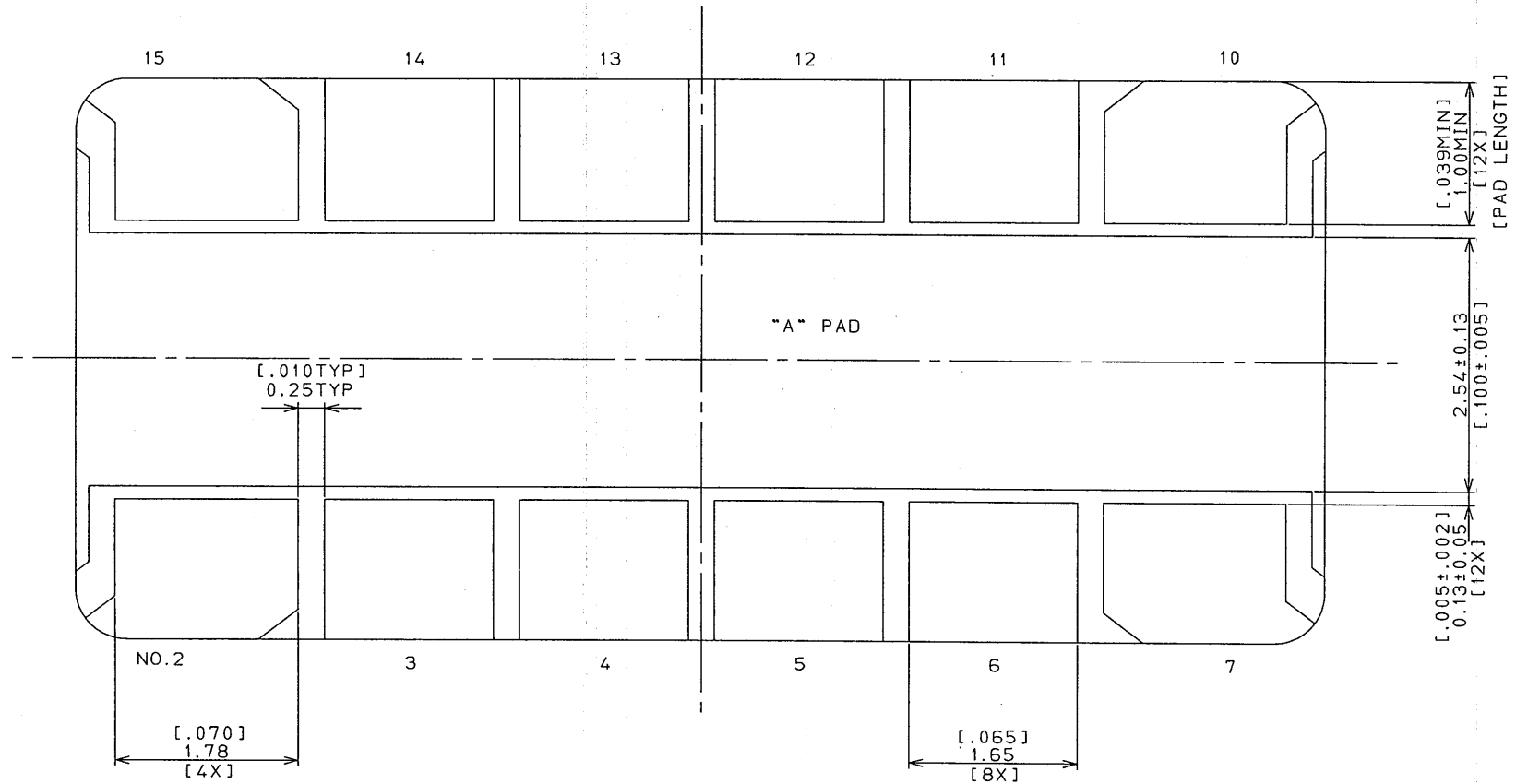
1. GOLD PLATE  $1.5 \mu\text{m}$  [ $60 \mu$  INCHES] MIN OVER  $2.0 \mu\text{m}$  [ $80 \mu$  INCHES] MIN NICKEL.
2. "A" PAD TO BE ELECTRICALLY CONNECTED TO PINS NO.1,8,9, AND 16.
3. SEAL RING ISOLATED.
4. LEAD RESISTANCE :  $50 \text{m}\Omega$  MAX (EXCEPT PIN NO.1,8,9 AND 16)
5. NTK SPEC YS-1002 SHALL APPLY.

③	RING	KOVAR			
②	LEAD	ALLOY 42		A	RE DRAWING
①	CERAMIC	BLACK ALUMINA		Ø	NEW DRAWING
Item	Name	Material	Description	Rev.	Description
UNLESS OTHERWISE SPECIFIED TOLERANCES: ± 1%					
N. L. T. 1 DECIMALS X.X ± 0.25			CHECKED	T.MIWA	NTK
2 DECIMALS X.XX ± 0.13			APPROVED	S.NISHIMURA	NGK SPARK PLUG CO., LTD.
CUSTOMER	CHELSEA TECHNOLOGY		APPROVED	S.NISHIMURA	TITLE
DWG NO.			SCALE		16 LEAD S/B PKG
				DWG NO.	IDK16F2-497DAL

NTK

LATEST REVISION'S DESCRIPTION

A ADDED NUMBER ON ALL B/G PADS.



B/G PADS DETAIL

\* IT SHALL BE ALLOWED WITH OR WITHOUT METALLIZATION  
AT THE EDGE OF CAVITY.

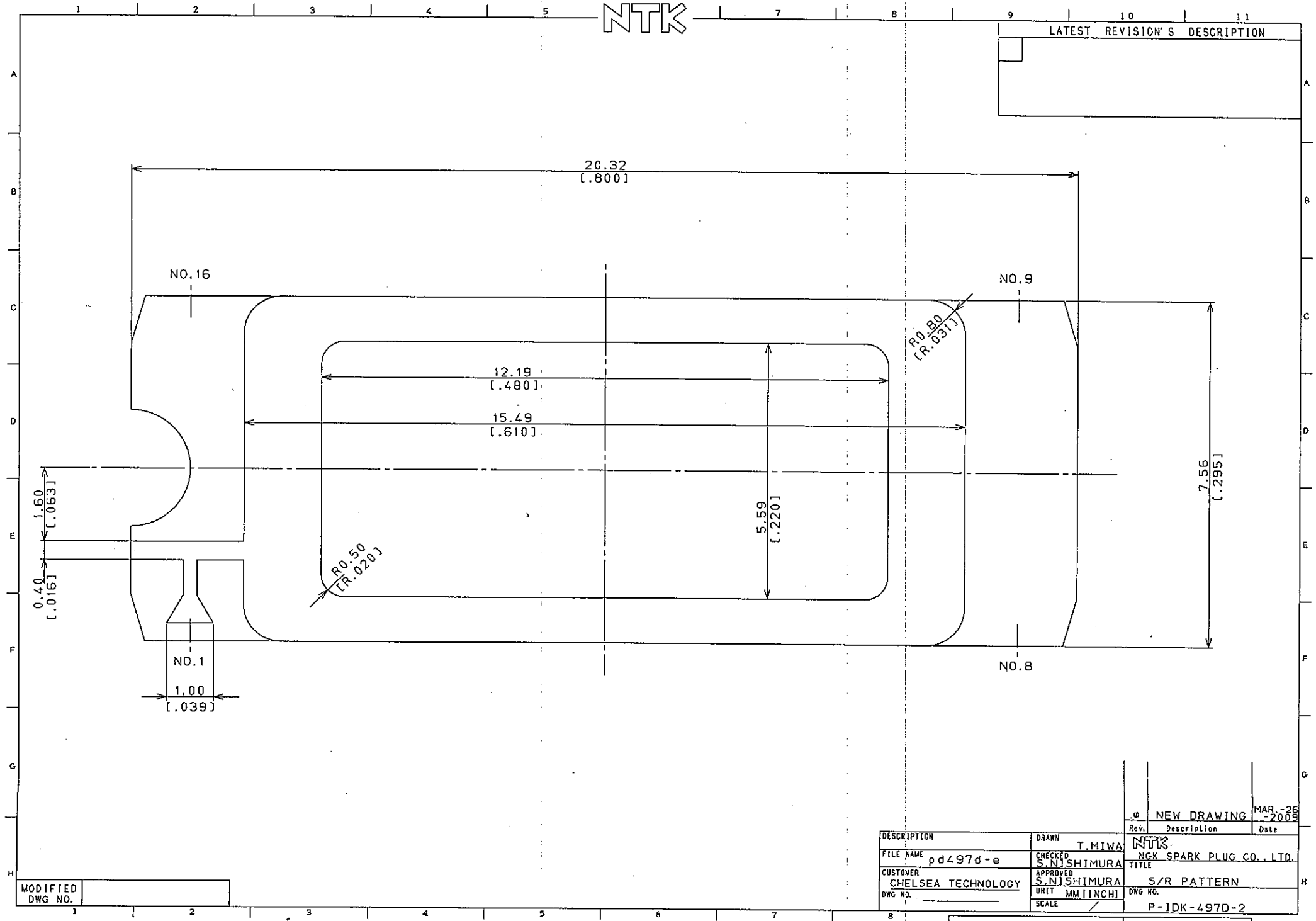
Rev.	Description	Date
A	RE DRAWING	APR-2007
φ	NEW DRAWING	MAR-2008
Rev.	Description	Date
	NTK	
	NGK SPARK PLUG CO., LTD.	
	TITLE	
	B/G & D/A PADS DETAIL	
	DWG NO.	IDK16F2-497DAL

UNLESS OTHERWISE SPECIFIED TOLERANCES: ± ] % N. L. T. 1 DECIMALS X.X ± 0.25 2 DECIMALS X.XX ± 0.13	DRAWN T.MIWA
CUSTOMER CHELSEA TECHNOLOGY	CHECKED S.NISHIMURA
DWG NO.	APPROVED S.NISHIMURA
	UNIT MM [INCH]
	SCALE /

MODIFIED  
DWG NO.

NTK

LATEST REVISION'S DESCRIPTION



MODIFIED DWG NO.

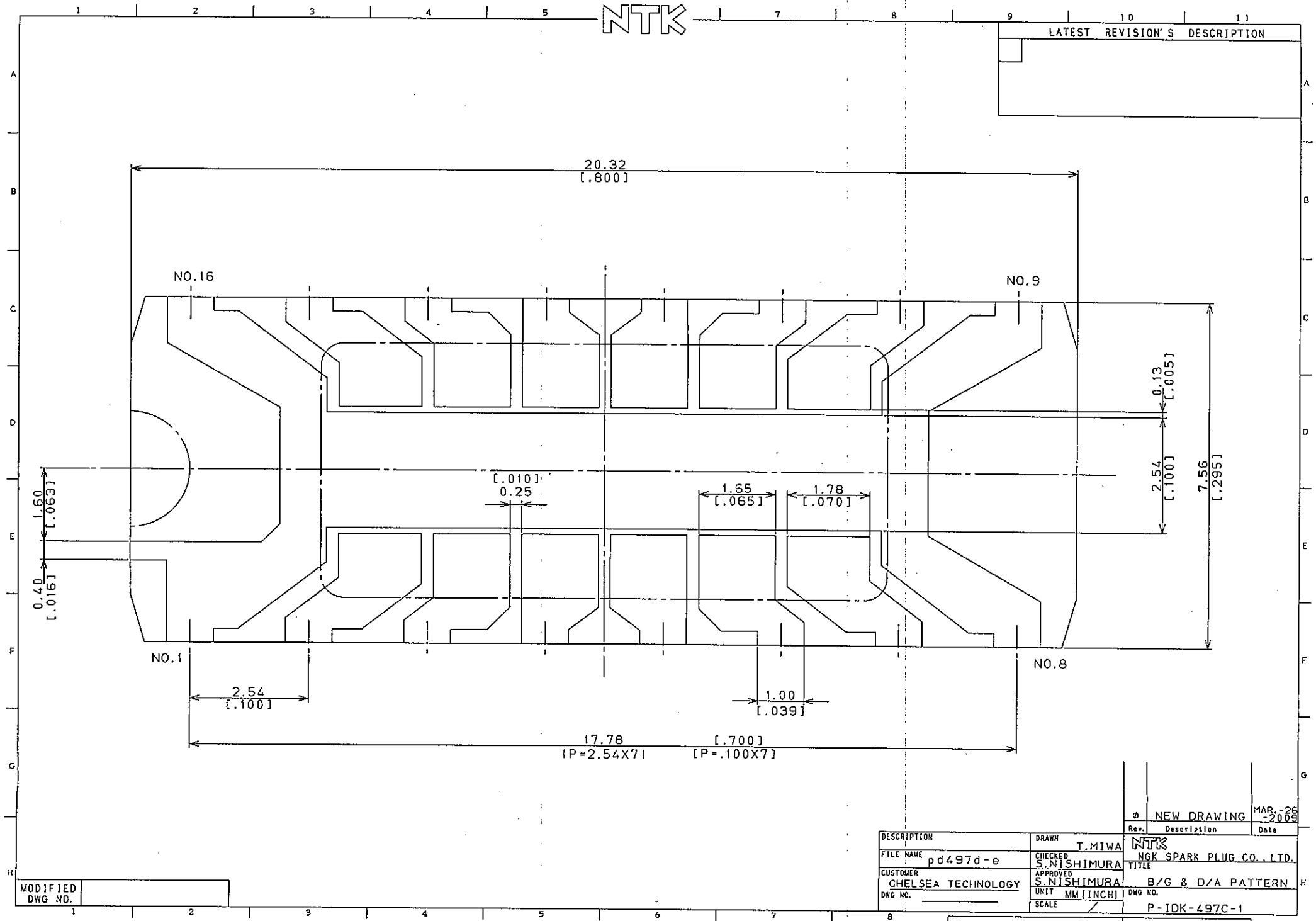
DESCRIPTION	DRAWN	T.MIWA	NTK
FILE NAME	CHECKED	S.NISHIMURA	NGK SPARK PLUG CO., LTD.
CUSTOMER	APPROVED	S.NISHIMURA	S/R PATTERN
DWG NO.	UNIT	MM/INCH	DWG NO.
	SCALE	/	P-IDK-497D-2

Rev.	Description	Date
0	NEW DRAWING	MAR. 28 - 2009

PART NO. SHEET OF

NTK

LATEST REVISION'S DESCRIPTION



MODIFIED  
DWG NO.

DESCRIPTION	DRAWN	T.MIWA	NTK
FILE NAME	CHECKED	S.NISHIMURA	NGK SPARK PLUG CO., LTD.
CUSTOMER	APPROVED	S.NISHIMURA	B/G & D/A PATTERN
DWG NO.	UNIT	MM [INCH]	DWG NO.
	SCALE	/	P-IDK-497C-1

Rev.	Description	Date
0	NEW DRAWING	MAR-28-2009

PART NO. SHEET OF