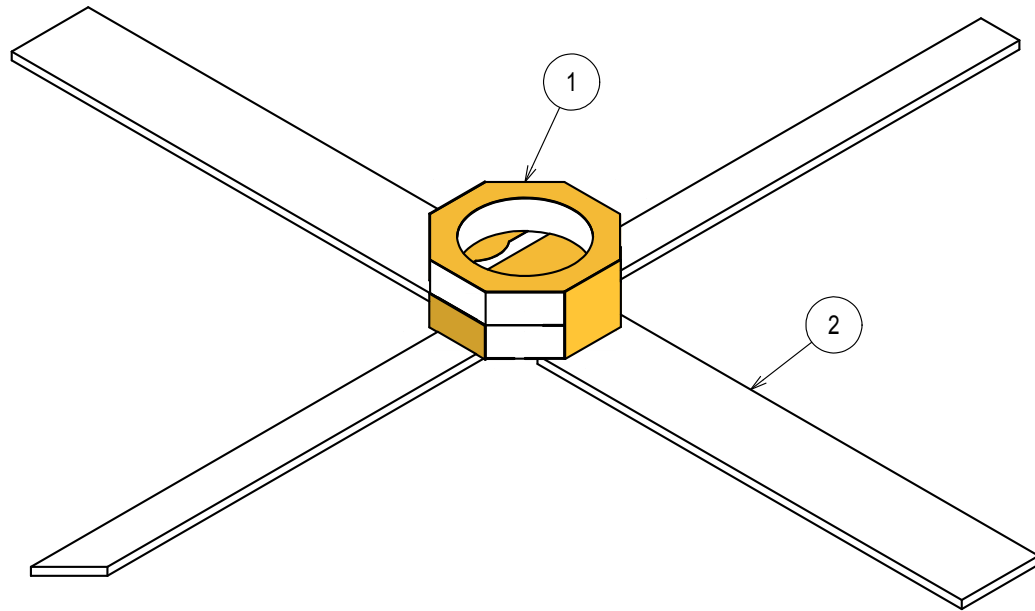


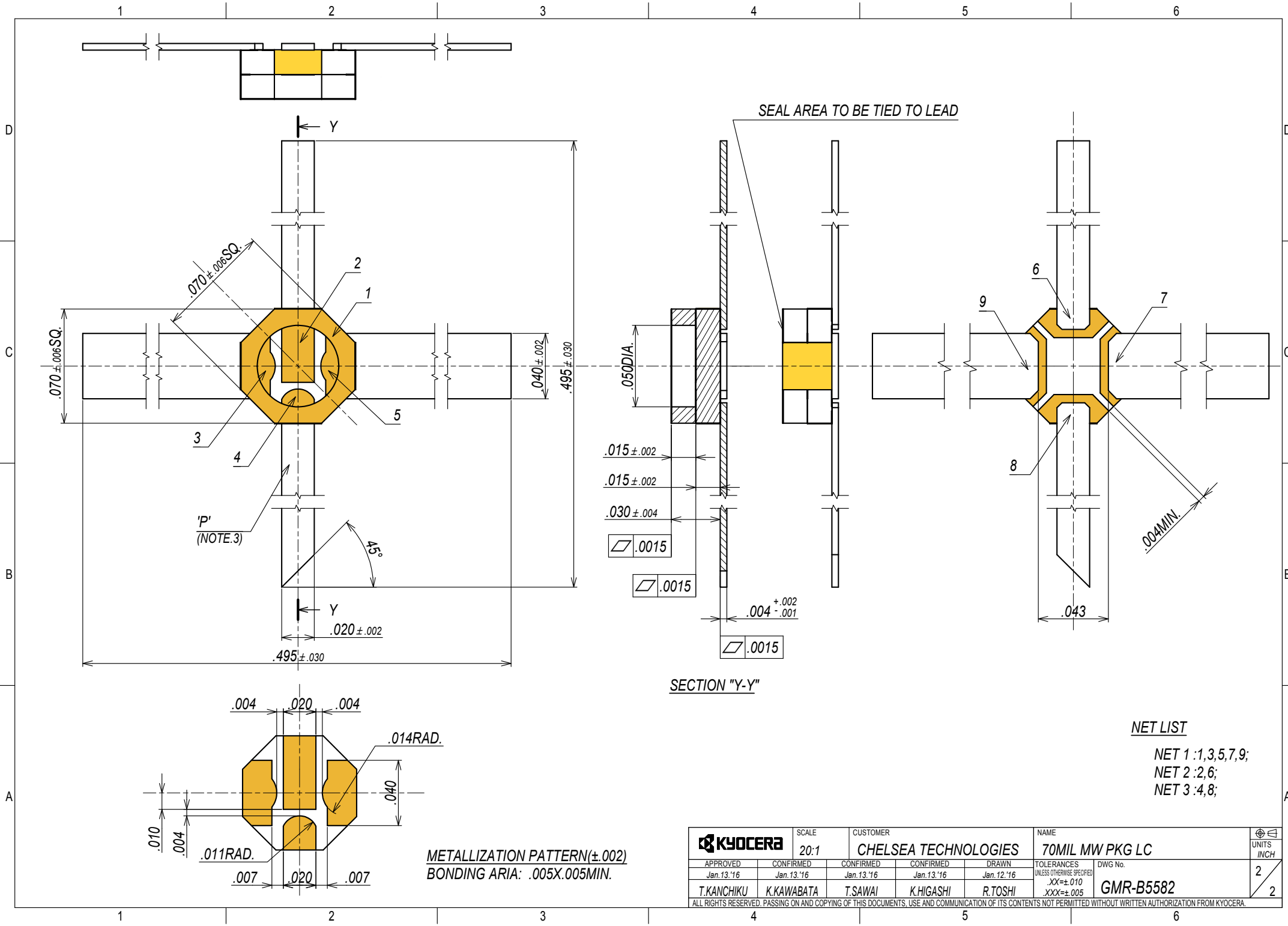
| ITEM | NAME | MATERIAL / COMPOSED PARTS | QTY |
|------|---------|---------------------------|-----|
| 1 | CERAMIC | KYOCERA A473(White) | 1 |
| 2 | LEAD | Fe-Ni-Co ALLOY | 4 |



NOTES

1. SHADED AREA METALLIZATION.
2. INSULATION RESISTANCE: LEAKAGE CURRENT $\leq 1.0 \times 10^{-7}$ A AT 100V DC.
3. FINISH: Ni PLATE 200 μ IN.MIN. + Au PLATE 100 μ IN.MIN.
PLATING THICKNESS MEASURED ON POINT 'P'.
4. NO BLISTERS ON Au AFTER 3MINUTES (IN AIR OVEN) AT 450°C AS SEEN UNDER 10X MAGNIFICATION.
5. HERMETICITY: 1.0×10^{-9} Pa·m³ /s AT 1.0×10^5 Pa DIFFERENTIAL.
6. LEAD PULL STRENGTH 8.9N MIN. PULLED 90° TO PLANE OF CERAMIC.
7. LEAD FATIGUE MUST PASS (2) 90° ARCS WITH 225 g WEIGHT.
8. PLATING ON THE TIP OF LEAD ARE NOT FOR SUBJECT.
(NOT APPLY NOTE 3,4)
9. GENERAL SPECIFICATION: MS-1001(LATEST VERSION)
VISUAL INSPECTION SPECIFICATION: MAS-1001(LATEST VERSION)

| | | | | | |
|--|------------|------------|----------------------|-----------------|--|
| | | SCALE | CUSTOMER | NAME | UNITS INCH |
| | | 20:1 | CHELSEA TECHNOLOGIES | 70MIL MW PKG LC | |
| APPROVED | CONFIRMED | CONFIRMED | CONFIRMED | DRAWN | TOLERANCES UNLESS OTHERWISE SPECIFIED |
| Jan.13.'16 | Jan.13.'16 | Jan.13.'16 | Jan.13.'16 | Jan.12.'16 | .XX \pm .010 .XXX \pm .005 |
| T.KANCHIKU | K.KAWABATA | T.SAWAI | K.HIGASHI | R.TOSHI | DWG No. GMR-B5582 |
| ALL RIGHTS RESERVED. PASSING ON AND COPYING OF THIS DOCUMENTS, USE AND COMMUNICATION OF ITS CONTENTS NOT PERMITTED WITHOUT WRITTEN AUTHORIZATION FROM KYOCERA. | | | | | 1 2 |



SEAL AREA TO BE TIED TO LEAD

SECTION "Y-Y"

NET LIST

- NET 1 :1,3,5,7,9;
- NET 2 :2,6;
- NET 3 :4,8;

METALLIZATION PATTERN(±.002)
 BONDING AREA: .005X.005MIN.

| | | | | | | |
|--|---------------------------------------|------------------------------------|--------------------------------------|--------------------------------|---|---------------|
| KYOCERA | | SCALE 20:1 | CUSTOMER CHELSEA TECHNOLOGIES | | NAME 70MIL MW PKG LC | UNITS INCH |
| APPROVED Jan.13.'16 T.KANCHIKU | CONFIRMED Jan.13.'16 K.KAWABATA | CONFIRMED Jan.13.'16 T.SAWAI | CONFIRMED Jan.13.'16 K.HIGASHI | DRAWN Jan.12.'16 R.TOSHI | TOLERANCES UNLESS OTHERWISE SPECIFIED XX±.010 XXX±.005 | |
| ALL RIGHTS RESERVED. PASSING ON AND COPYING OF THIS DOCUMENTS, USE AND COMMUNICATION OF ITS CONTENTS NOT PERMITTED WITHOUT WRITTEN AUTHORIZATION FROM KYOCERA. | | | | | | 2 2 |