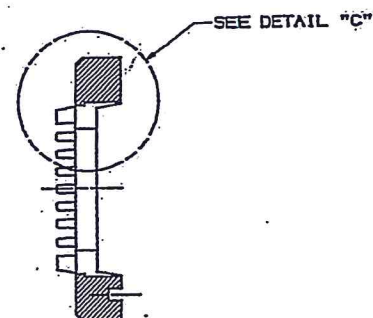
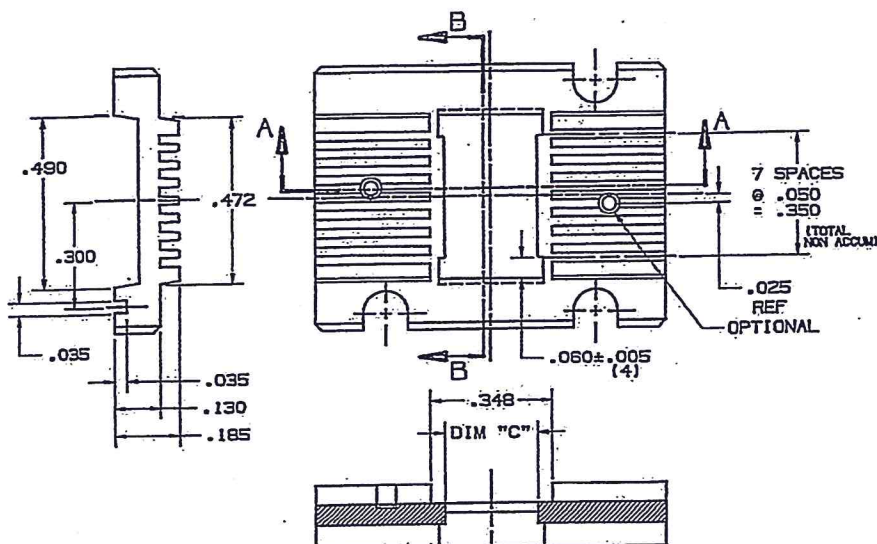
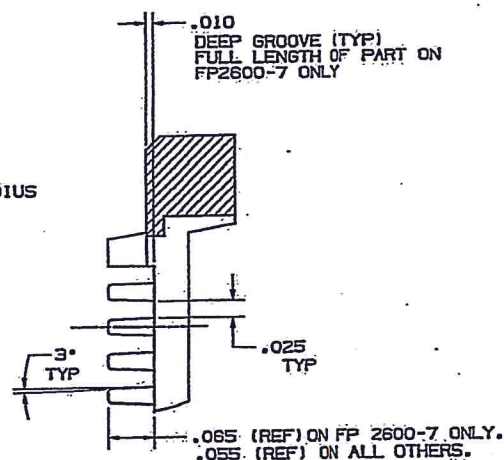


G-E PART NUMBER	DIM "C"	APPROX. MAX. PKG. SIZE
FP2600-1	.265	.260 X .390
FP2600-3	.190	.185 X .390
FP2600-4	.135	.130 X .390
FP2600-5	.285	.280 X .390
FP2600-6	.299	.285 X .390
FP2600-7	.280	.275 X .390
FP2600-8	.299	.275 X .408±.002

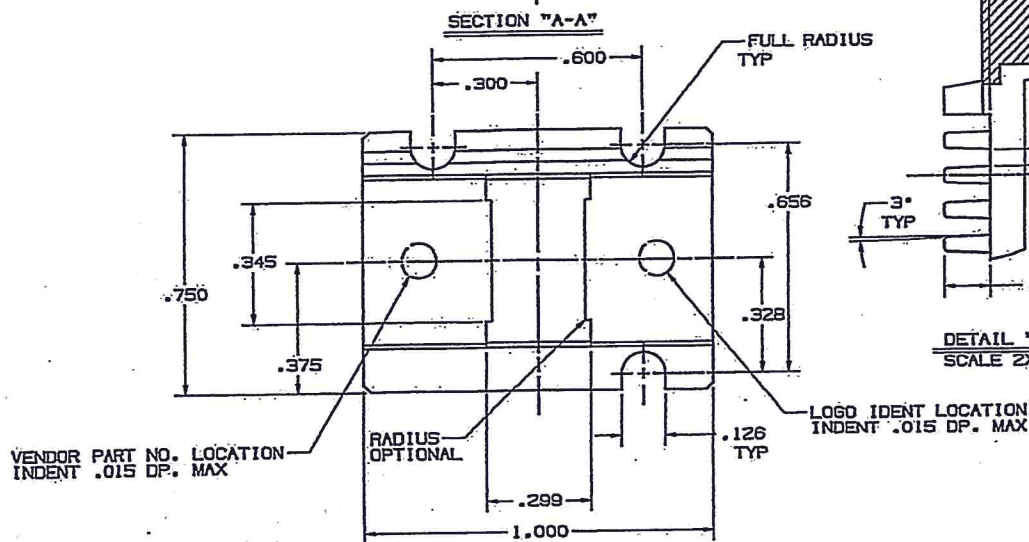
NOTE: 1 CARRIER USES RC 1000 RETENTION CLIP



SECTION "B-B"



DETAIL "C"
SCALE 2X



PART NO. 7-0016-00155-XX0-XXX-000

MARCH 5, 1986

A

IMPORTANT NOTICE TO PURCHASER: ALL STATEMENTS, TECHNICAL INFORMATION AND RECOMMENDATIONS CONTAINED HEREIN ARE BASED ON TESTS WE BELIEVE TO BE RELIABLE, BUT THE ACCURACY OR COMPLETENESS THEREOF IS NOT GUARANTEED, AND THE FOLLOWING IS MADE IN LIEU OF ALL WARRANTIES, EXPRESSED OR IMPLIED.

SELLER'S AND MANUFACTURER'S ONLY OBLIGATION SHALL BE TO REPLACE SUCH QUANTITY OF THE PRODUCT PROVED TO BE DEFECTIVE. NEITHER SELLER NOR MANUFACTURER SHALL BE LIABLE FOR ANY INJURY, LOSS OR DAMAGE, DIRECT OR CONSEQUENTIAL, ARISING OUT OF THE USE OF OR THE INABILITY TO USE THE PRODUCT. BEFORE USING, USER SHALL DETERMINE THE SUITABILITY OF THE PRODUCT FOR HIS INTENDED USE, AND USER ASSUMES ALL RISK AND LIABILITY WHATSOEVER IN CONNECTION THEREWITH. NO STATEMENT OR RECOMMENDATION NOT CONTAINED HEREIN SHALL HAVE ANY FORCE OR EFFECT UNLESS IN AN AGREEMENT SIGNED BY OFFICERS OF SELLER AND MANUFACTURER.

GIBSON-EGAN
PRODUCTS



ISSUE DATE AND CHANGE RECORD

REV.

CARRIER, FLATPACK
16 LD, 2 PC, 2600 SERIES

TOLERANCE UNLESS NOTED

INCH
[mm]

SCALE: NONE

GE/FP2600

	.0	.00	.000
INCH	±.1	±.01	±.005
mm	±.3	±.03	

TECHNICAL SERVICE ENGINEER

[Signature]
SUSTAINING ENGINEER

[Signature]

A

5040

