


OPTION TABLE

OPT #	CAVITY SIZE	CAVITY CONFIGURATION	FORM CONFIGURATION	TOP FORM	BOTTOM FORM	EXTERNAL CONFIGURATION	LEAD SHOULDER CONFIGURATION
01	.260 X .260	A	-	.611	.660	A	-
03	.330 X .286	C	-	.611	.700	A	-
04	.330 X .286	C	-	.611	.700	D	-
05	.330 X .286	D	-	.611	.660	A	-
07	.336 X .310	E	-	.611	.700	A	-
09	.420 X .290	G	-	.611	.700	A	-
11	.420 X .290	H	-	.611	.700	A	-
16	.330 X .260	M	-	.611	.700	A	-
22	.420 X .310	S	-	.611	.700	A	-
23	.260 X .268	T	-	.611	.680	A	-
24	.180 X .240	U	-	.611	.700	A	-
25	.420 X .330	V	-	.611	.660	A	-
27	.260 X .260	A	-	.611	.675	A	-
28	.260 X .260	A	-	.611	.665	A	-
29	.260 X .260	A	-	.611	.680	A	-
30	.260 X .260	A	-	.611	.700	A	-
31	.336 X .310	E	-	.611	.660	A	-
32	.330 X .260	M	-	.611	.660	A	-

NOTES : UNLESS OTHERWISE SPECIFIED

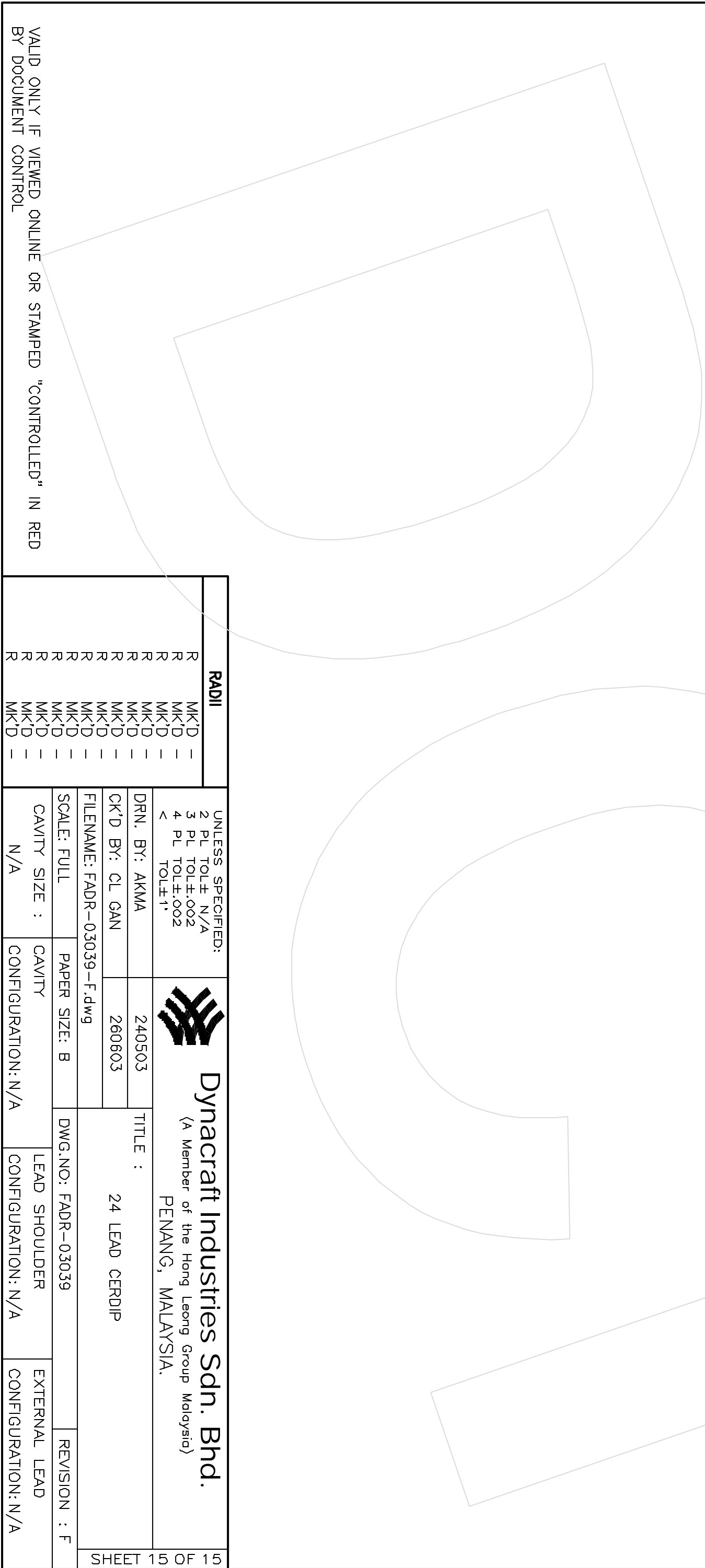
1	UNSPECIFIED CRITERIA FOR RAW FRAMES. INSPECT PER : HPQ1 02355
2	ALL SPECIFIED CRITERIA APPLICABLE TO FINISH PRODUCT.
3	ALL DIMENSIONS ARE IN INCHES UNLESS OTHERWISE SPECIFIED.
4	DIMENSIONS ARE SYMMETRICAL ABOUT THE CENTERLINE EXCEPT AS SHOWN.
5	SHARP CORNER REQUIRED FOR ALL LEAD TIPS.
6	DIMENSION SHOWN PRIOR TO FORMING.
7	MATERIAL TYPE/THICKNESS : ALLOY42/.010±.0003 UNCOINED
8	RADIUS ON ALL CORNERS UNLESS OTHERWISE SPECIFIED.
9	BURR
	COIN AREA
	VERTICAL
	HORIZONTAL
	OUTSIDE COIN AREA
	VERTICAL
	HORIZONTAL
10	METAL TO METAL SPACING.
11	LEAD PLANARITY
12	LEAD COPLANARITY
13	COIN DEPTH.
	COIN LENGTH.
14	ALUMINIUM THICKNESS.
15	LEAD POSITION AFTER FORMING.
16	FRAMES SUPPLIED IN SINGULATED UNITS.

VALID ONLY IF VIEWED ONLINE OR STAMPED "CONTROLLED" IN RED BY DOCUMENT CONTROL


RADI		UNLESS SPECIFIED: 2 PL TOL± N/A 3 PL TOL±.002 4 PL TOL±.002 < TOL±1'				Dynacraft Industries Sdn. Bhd. (A Member of the Hong Leong Group Malaysia) PENANG, MALAYSIA.	
R	MK'D	DRN. BY: TC YONG	180603	TITLE : 24 LEAD CERDIP			
R	MK'D	CK'D BY: CL GAN	180603	DWG.NO: FADR-03039			
R	MK'D	FILENAME: FADR-03039-F.dwg		REVISION : F			
R	MK'D	SCALE: FULL	PAPER SIZE: B	LEAD SHOULDER CONFIGURATION: N/A			
R	MK'D	CAVITY SIZE : N/A	CAVITY CONFIGURATION: N/A	EXTERNAL LEAD CONFIGURATION: N/A			

REVISION HISTORY

REVISION	DESCRIPTION	ENGINEER	DATE	ECN #
A	NEW DRAWING	SUHDR G.	MAC 09 1993	N/A
B	OPTION 4: CHANGED B TO D	V.GRAHAM	OCT 03 1995	N/A
C	CHANGE OPT. 5 & 6 TO .330: OPT. 25 TO EXT.CONFIG. A: ADD OPT. 26: CHANGE TIP TO .052 ON PG. 9,10,12-15, 17	D SANSONETTI	NOV 08 1995	N/A
D	UPDATED RELEASE	K. ASKEY	OCT 04 2001	N/A
E	ADDED OPTION 32	K. ASKEY	JAN 21 2002	N/A
F	UPDATE SHEET #1 NOTE #1, CHANGE TO NEW FADR FORMAT, ADD ECN # COLUMN IN REVISION HISTORY, CORRECT ERROR ON CAVITY CONFIGURATION C : ".203 SC" WAS "(2) .203 SC" ; ".232" WAS "(2) .232" ; ".268" WAS "(2) .268" & CAVITY CONFIGURATION U : ".032" WAS "(2) .032" ; ".068" WAS "(2) .068"	CL GAN	06 AUG 2003	DR0308001



VALID ONLY IF VIEWED ONLINE OR STAMPED "CONTROLLED" IN RED BY DOCUMENT CONTROL

RADI		UNLESS SPECIFIED: 2 PL TOL± N/A 3 PL TOL±.002 4 PL TOL±.002 < TOL±1'				Dynacraft Industries Sdn. Bhd. (A Member of the Hong Leong Group Malaysia) PENANG, MALAYSIA.		TITLE : 24 LEAD CERDIP		SHEET 15 OF 15	
DRN. BY: AKMA		240503		PAPER SIZE: B		DWG.NO: FADR-03039		REVISION : F			
CK'D BY: CL GAN		260603		SCALE: FULL		FILENAME: FADR-03039-F.dwg		LEAD SHOULDER CONFIGURATION: N/A		EXTERNAL LEAD CONFIGURATION: N/A	
CAVITY SIZE : N/A		CAVITY CONFIGURATION: N/A		CAVITY CONFIGURATION: N/A		CAVITY CONFIGURATION: N/A		CAVITY CONFIGURATION: N/A		CAVITY CONFIGURATION: N/A	