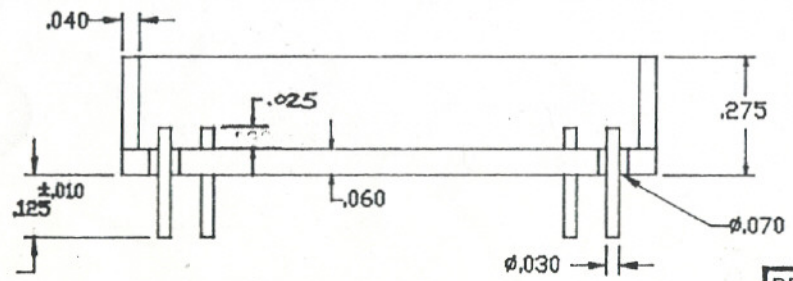
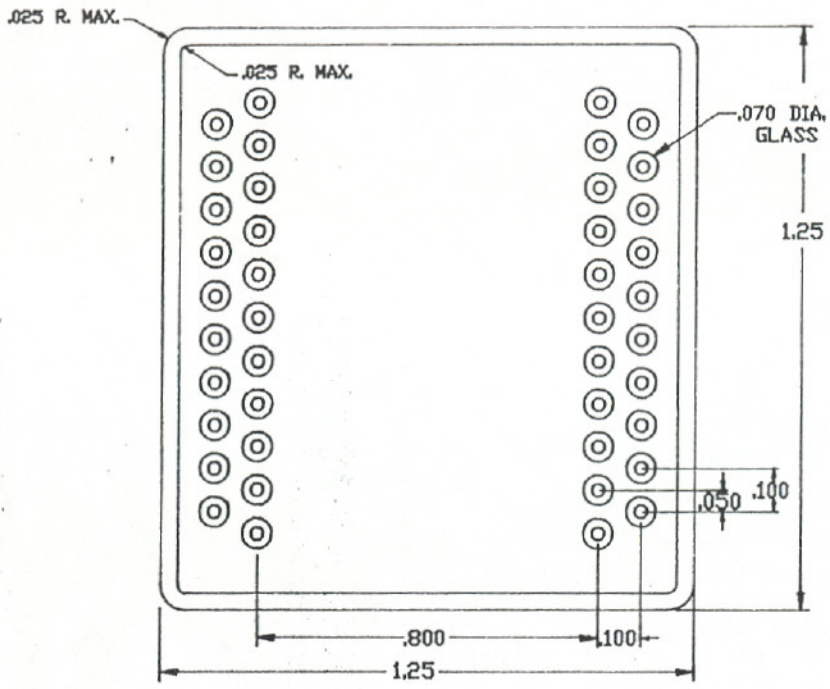


A	INITIAL RELEASE	4-23-92	ESD
B	CHANGE PER SCA 2043	5-15-92	ESD



NOTES:

1. MATERIAL: FRAME - COLD ROLLED STEEL
BOTTOM - COLD ROLLED STEEL
PINS - COPPER CORED 52 ALLOY
2. PLATING - 100-350u" NICKEL
3. PROCUREMENT SPEC. D210001B APPLIES

- PRODUCT WHSE NEXT TO THE LAST LETTER IS AS LISTED BELOW SHALL CONFORM TO THE FOLLOWING
- H - MUST MEET ALL THE REQUIREMENTS OF THE PROCUREMENT SPEC LISTED INCLUDING ELEMENT EVALUATION PER MIL-STD-883, METHOD 5008, CLASS B, AS OUTLINED IN DMIREL INCOMING MATERIAL CONTROL DOCUMENTATION.
- G/B - MUST BE FUNCTIONALLY THE SAME AS THE GENERIC OR MANUFACTURERS PART NUMBER BUT ARE NOT REQUIRED TO MEET THE ELEMENT EVALUATION REQUIREMENTS OF MIL-STD-883, METHOD 5008.
- X SPECIAL SCREENING AS REQUIRED ON THE DMIREL PURCHASE ORDER. NORMALLY THESE PARTS ARE UPGRADED 'H' PARTS.

DR. <i>E.R.</i> 4-22-92			
CHK <i>DPB</i> 4-23-92			
APP'D <i>RS</i> 4-23-92			
UNLESS OTHERWISE SPECIFIED DIMENSIONS ARE IN <small>mm</small> (IN)		42 PIN PLUG-IN	
TOLERANCES ARE:		DRAWING NO.	
XXX = +/- .005		C300013*	
XX = +/- .01		REV. B	
CODE ID 69210		MAT'L:	SCALE:
		NOTED	#
		SHT. OF	