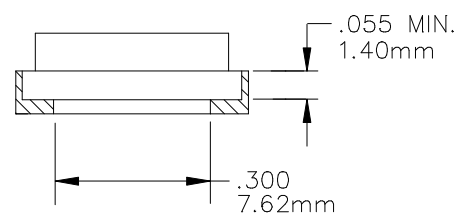
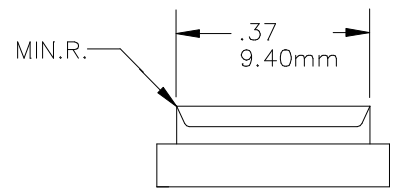
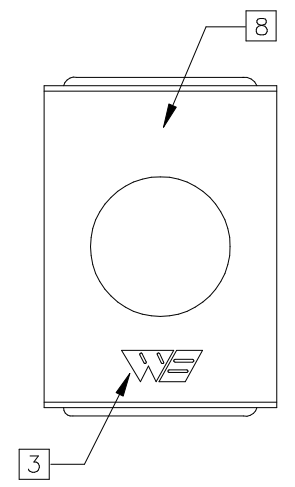
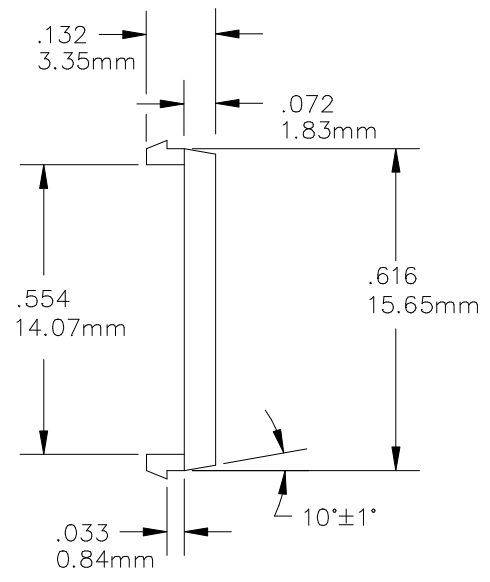
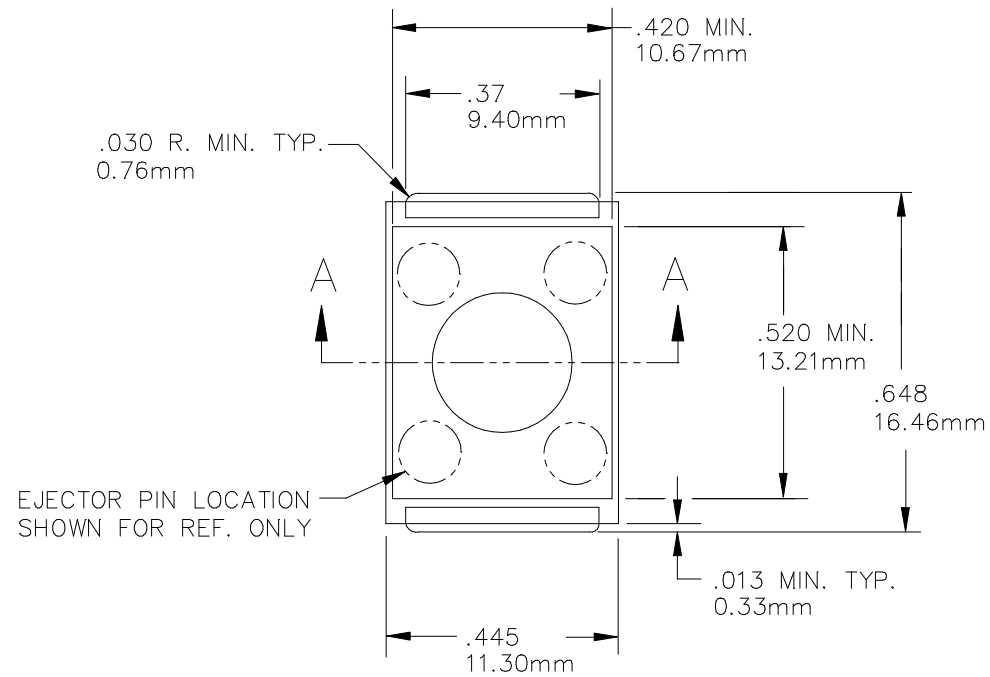


A	C	P	REV	DATE	BY	ECN #	REV	DATE	BY	ECN #	REV	DATE	BY	ECN #
-	X	-	G	7-26-88	KF	88-0204	H	3-3-90	KF	90-0117	H1	9-23-98	DW	98-0883



SECTION A-A

039-584-0XX

		MATERIAL [6]								
		1	2	3	4	5	6	7	8	9
COLOR		PSO	PBT	PPS		ESD	HI TEMP			
0	NAT.	0211	0226							
1	PINK			---	---	---	0285			
2	BLUE			---	---	---				
3	GREEN			---	---	---				
4	BLACK			---	---	---				

CUSTOMER DRAWING

- 9 REMOVE GATES FLUSH TO .005(0.05mm) BELOW SURFACE.
- [8] ALL CAVITIES TO BE IDENTIFIED LOCATE NUMBERS THIS AREA .002(0.05mm) HIGH.
- 7 REV. LEVEL TO BE LOCATED ON EJECTOR PIN. LOCATION OPTIONAL. SIZE TO FIT.
- [6] MATERIALS SHOWN WITHOUT PART NUMBERS ARE FOR REF. ONLY AND REQUIRE ENGINEERING APPROVAL PRIOR TO USE.
- 5 "mm" DENOTES METRIC DIMENSIONS IN MILLIMETERS.
- 4 EJECTOR PIN MARKS TO BE FLUSH TO .005(0.13mm) BELOW SURFACE.
- [3] WELLS LOGO (WE) LOCATED APPROXIMATELY AS SHOWN .06(1.52mm) HIGH. RAISED HEIGHT OF LOGO MUST NOT EXCEED TOLERANCE LIMIT OF PART.
- 2 ALL CORNER RADII AND FILLETS SHALL BE .010(0.25mm) R. MAXIMUM.
- 1 PARTS TO BE MOLDED IN ACCORDANCE TO WELLS SPECIFICATION #QCI-12.

LEGEND		THIS DOCUMENT CONTAINS PROPRIETARY INFORMATION THAT IS THE SOLE PROPERTY OF WELLS-CTI. THIS INFORMATION IS TO BE HELD BY ITS RECIPIENT ON A CONFIDENTIAL BASIS, AND IS NOT TO BE DISCLOSED TO OTHERS OR USED WITHOUT WRITTEN CONSENT OF WELLS-CTI.	MATERIAL/FINISH	DRAWN	DATE	<b>WELLS-CTI</b> <small>South Bend Indiana USA</small> <small>A subsidiary of PCD Inc.</small>
◇	CRITICAL		SEE TABLE	KM	11-16-81	
0	TOTAL NO. OF ◇ USED		REFERENCE	CHECKED	DATE	
			-	-	-	
SIZE	PROJECTION	PROJECT/SERIES	ENGINEER	DATE	PART NAME	REV
C		039	GR	12-4-81	FLATPACK CLIP	H1
		TOLERANCES	ENG. SUPRV.	DATE	PART NUMBER	
		.XX ±.01			039-584-0XX	
		.XXX ±.005	MOLDING	DATE	SCALE 4X	UNITS: in [mm]
		.XXXX -----			CAD NUMBER	SHEET 1 OF 1
		ANGLE ±1°			029-584C	
DO NOT SCALE						