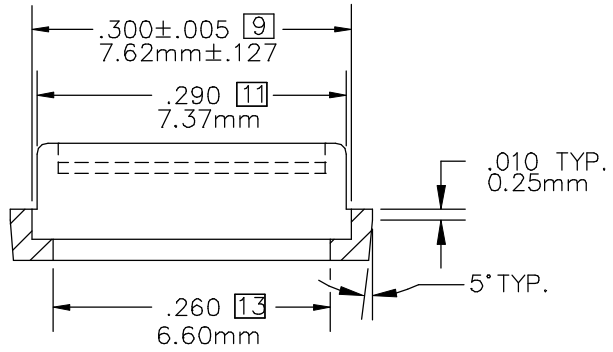
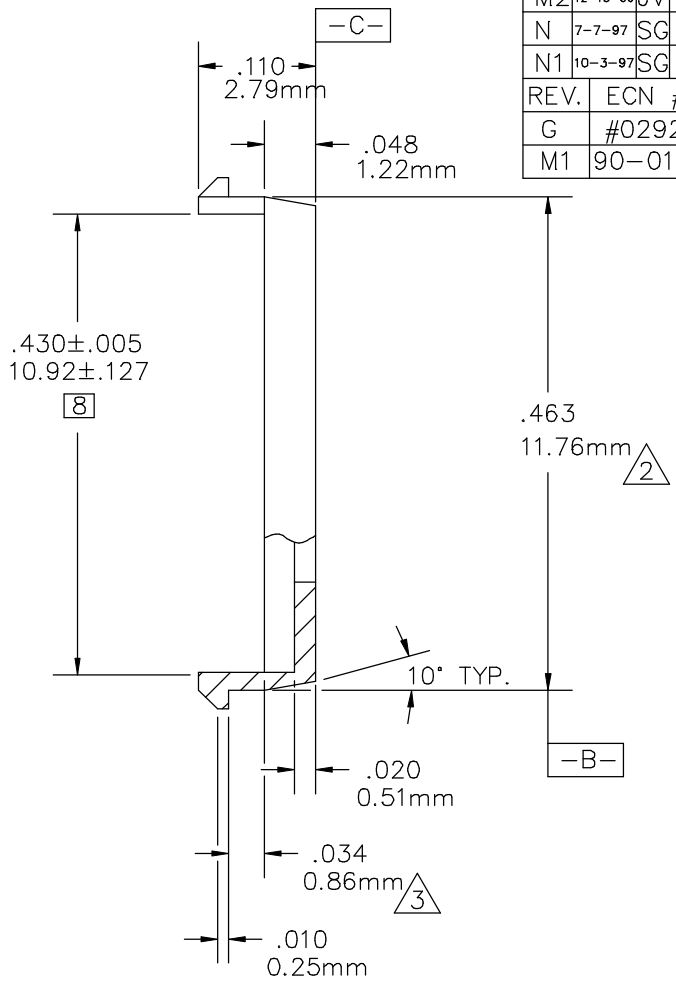
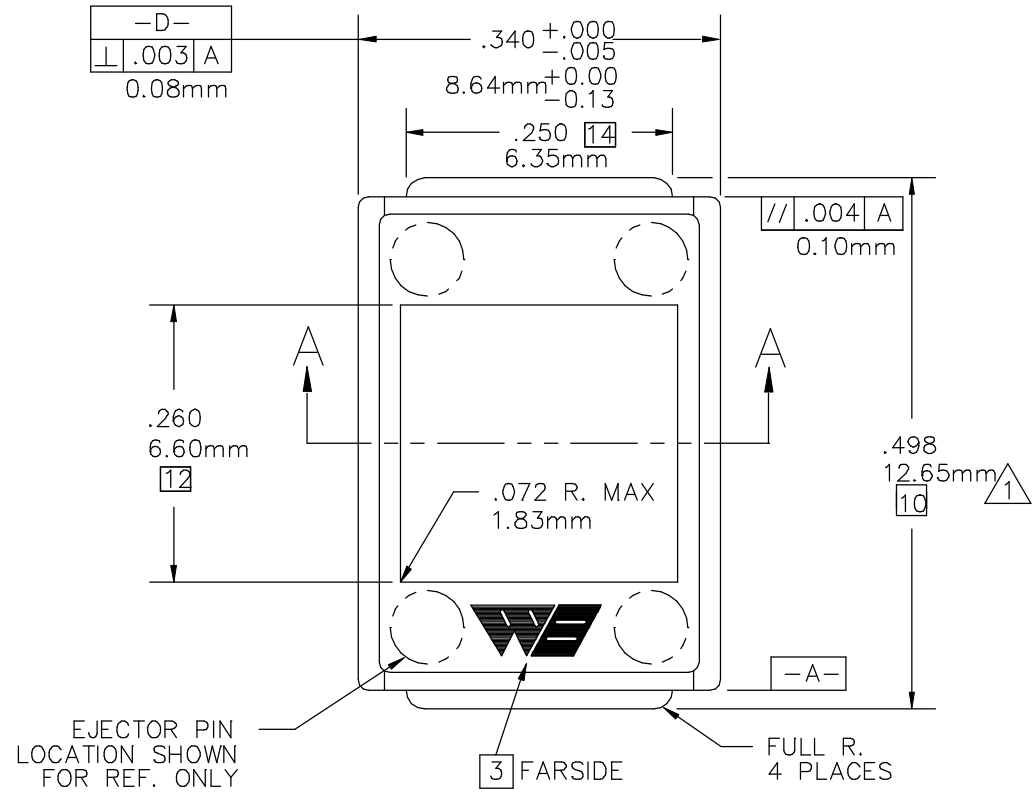


REV.	DATE	BY	REVISION							
M2	12-13-96	JV	INC. ECN #96-0684 REVISED & REPLOTED.							
N	7-7-97	SG	INC. ECN. #97-0534 REVISED & REPLOTED.							
N1	10-3-97	SG	INC. ECN. #97-0869 REVISED & REPLOTED.							
REV.	ECN #	REV.	ECN #	REV.	ECN #	REV.	ECN #	REV.	ECN #	
G	#0292	H	#0566	J	#0980	K	#1142	L	#0288	
M1	90-0191							M	88-0205	



- 14  $\text{D}$  .010 (0.25mm)
- 13  $\text{D}$  .008 (0.20mm)
- 12  $\text{B}$  .008 (0.20mm)
- 11  $\text{D}$  .005 (0.13mm)
- 10  $\text{B}$  .005 (0.13mm)
- 9  $\text{D}$  .004 (0.10mm)
- 8  $\text{B}$  .004 (0.10mm)

- 7 REV. LEVEL TO BE LOCATED ON EJECTOR PIN. LOCATION OPTIONAL. SIZE TO FIT.
- 6 MATERIALS SHOWN WITHOUT PART NUMBERS ARE FOR REF. ONLY AND REQUIRE ENGINEERING APPROVAL PRIOR TO USE.
- 5 "mm" DENOTES METRIC DIMENSIONS IN MILLIMETERS.
- 4 EJECTOR PIN MARKS TO BE FLUSH TO .005(0.13mm) BELOW SURFACE.
- 3 WELLS LOGO (WE) LOCATED APPROXIMATELY AS SHOWN .06(1.52mm) HIGH. RAISED HEIGHT OF LOGO MUST NOT EXCEED TOLERANCE LIMIT OF PART.
- 2 ALL CORNER RADII AND FILLETS SHALL BE .010(0.25mm) R. MAXIMUM.
- 1 PARTS TO BE MOLDED IN ACCORDANCE TO WELLS SPECIFICATION #QCI-12.

NOTES: UNLESS OTHERWISE SPECIFIED

TABLE 1  
039-566-0XX

	A	C	P						
	-	X	-						
PART NO. 039-566-0XX									
MATERIAL 6									
	1	2	3	4	5	6	7	8	9
COLOR	PSO	PBT	PPS	HI TEMP ESD	ESD	HI TEMP			
0	NAT.	0211							
1	PINK					0285			
2	BLUE								
3	GREEN								
4	BLACK				0297				

CUSTOMER DRAWING

LEGEND	ITEM	PART NUMBER	QTY	DESCRIPTION
$\diamond$	CRITICAL	THIS DOCUMENT CONTAINS PROPRIETARY DESIGNS, SPECIFICATIONS, DATA, INFORMATION AND TECHNICAL MATERIAL THAT ARE THE SOLE PROPERTY OF WELLS ELECTRONIC, INC. THIS INFORMATION IS TO BE HELD AND TREATED BY ITS RECIPIENT ON A CONFIDENTIAL BASIS, AND IS NOT TO BE SHOWN OR DISCLOSED TO THIRD PARTIES WITHOUT THE WRITTEN CONSENT OF WELLS ELECTRONICS, INC. THIS DATA DOES NOT CONVEY MANUFACTURING RIGHTS TO ANY ITEM SHOWN.		
$\triangle$	MAJOR			
$\square$	MINOR			
	ALL OTHERS			
	LAST NUMBER USED WAS : 3			
	NUMBERS IN CRITICAL & MAJOR DIMENSIONS ARE RANDOMLY PLACED AND HAVE NO SPECIFIC ORDER IN THE WAY THAT THEY HAVE BEEN NUMBERED.			
	XX0-996-62			
	PART NO.			
		MATERIAL		
		SEE TABLE 1		
		FINISH		
		DO NOT SCALE		
		TOLERANCES		
		.XX ± .01 ± 0.25mm		
		.XXX ± .003 ± 0.08mm		
		.XXXX - - - - -		
		ANGLE ± 1°		
		DRAWN		
		G-0-S		
		DATE		
		5-22-90		
		CHECKED		
		KEN M.		
		DATE		
		5-30-90		
		PROJ. ENG.		
		RALSTIN		
		DATE		
		5-30-90		
		CHEF ENG.		
		T.L.		
		DATE		
		5-30-90		
		MFG. ENG.		
		D.S.		
		DATE		
		5-31-90		
		QUALITY		
		W.W.H.		
		DATE		
		5-31-90		
		PART NO.		
		039-566-0XX		
		REV.		
		N1		
		SCALE		
		8X		
		SHEET		
		CAD DWG NO.		
		039-566C		
		SUB-DR ON SERVER		
		CARRIERC		