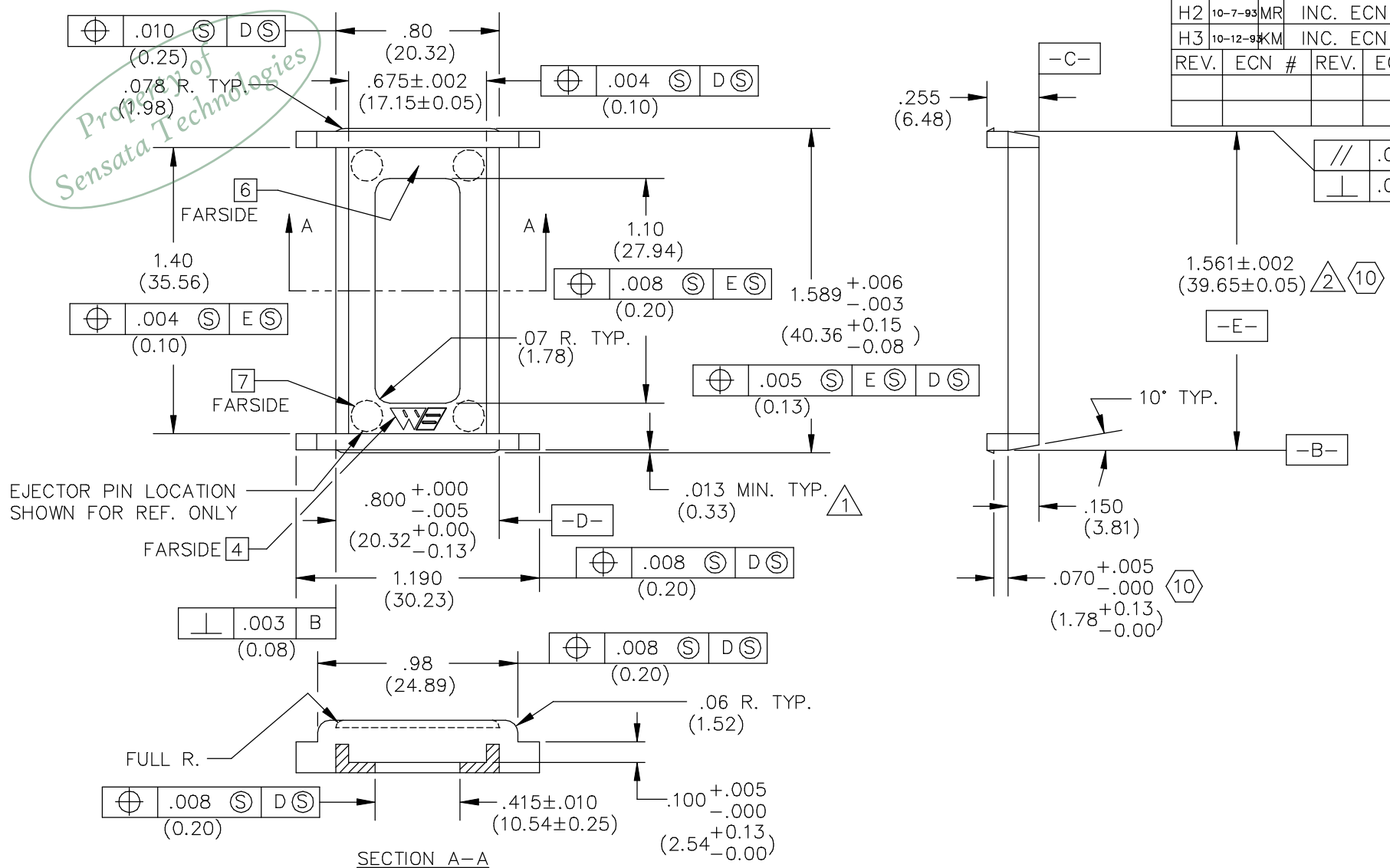


REV.	DATE	BY	REVISION							
H1	2-14-91	GS	INC. ECN #91-0062 REVISED & REDRAWN ON CAD							
H2	10-7-93	MR	INC. ECN #93-0449 REVISED & REDRAWN ON CAD							
H3	10-12-94	KM	INC. ECN #93-0466 REVISED & REPLOTED							
REV.	ECN #	REV.	ECN #	REV.	ECN #	REV.	ECN #	REV.	ECN #	



//	.004(0.10)	B
⊥	.003(0.08)	C

TABLE 1
039-207-0XX

A	C	P
-	-	X
PART NO. 039-207-0XX		

COLOR	MATERIAL [8]								
	1	2	3	4	5	6	7	8	9
0 NAT.	0211			HI TEMP ESD	ESD	HI TEMP			
1 PINK	0261					0285			
2 BLUE									
3 GREEN									
4 BLACK				0297	0282				

⑩ THE FOLLOWING DIMENSIONS ARE DEVIATED FOR THE LIFE OF THE EXISTING TOOL ONLY: 1.561±.002 (39.65±0.05) TO 1.561^{+0.007}_{-.002} (39.65^{+0.18}_{-0.05})
.070^{+0.005}_{-.000} (1.78^{+0.13}_{-0.00}) TO .070^{+0.007}_{-.000} (1.78^{+0.18}_{-0.00})
.005 OFFSET ALLOWABLE

- 9 (XX.XX) DENOTES METRIC DIMENSIONS IN MILLIMETERS.
- [8] MATERIALS SHOWN WITHOUT PART NUMBERS ARE FOR REFERENCE ONLY AND REQUIRES ENGINEERING APPROVAL PRIOR TO USE.
- [7] PART NUMBER TO BE .040 (1.02) HIGH RECESSED .001/.003 (0.03/0.08) BELOW SURFACE APPROX. THIS LOCATION.
- [6] MULTI-CAVITY MOLDS MUST HAVE ALL CAVITIES IDENTIFIED. LOCATE NUMBERS THIS AREA. SIZE TO FIT.
- 5 EJECTOR PIN MARKS TO BE FLUSH TO .005 (0.13) BELOW SURFACE.
- [4] WELLS LOGO LOCATED APPROX. AS SHOWN .060 (1.52) HIGH RAISED HEIGHT OF LOGO MUST NOT EXCEED TOLERANCE LIMIT OF PART.
- 3 PIN GATES MUST BREAK OFF WITHOUT LEAVING A PROJECTION GREATER THAN .005 (0.13) OR A HOLE IN SIDEWALL WHERE GATE IS LOCATED.
- 2 FLASH, FLOW LINES, SEAMS, EJECTOR MARKS, MOLD CAVITY NUMBERS, MOLD FINISH MARKS, AND GATES WHICH ARE NORMALLY PRODUCED IN MOLDING SHALL BE CONSIDERED IMPERFECTIONS AND BE CONTROLLED BY NOTE 1.
- 1 IMPERFECTIONS ON ANY SURFACE ARE ACCEPTABLE UNDER THE FOLLOWING CONDITIONS UNLESS OTHERWISE SPECIFIED IMPERFECTION SHALL BE WITHIN THE TOLERANCE ZONE OF ANY SURFACE, BUT IF THE TOLERANCE ZONE IS GREATER THAN .005(0.13) THE IMPERFECTIONS SHALL NOT EXCEED .005 (0.13).

NOTES: UNLESS OTHERWISE SPECIFIED

LEGEND	ITEM	PART NUMBER	QTY	DESCRIPTION
◇	CRITICAL	THIS DOCUMENT CONTAINS PROPRIETARY DESIGNS, SPECIFICATIONS, DATA, INFORMATION AND TECHNICAL MATERIAL THAT ARE THE SOLE PROPERTY OF WELLS ELECTRONIC, INC. THIS INFORMATION IS TO BE HELD AND TREATED BY ITS RECIPIENT ON A CONFIDENTIAL BASIS, AND IS NOT TO BE SHOWN OR DISCLOSED TO THIRD PARTIES WITHOUT THE WRITTEN CONSENT OF WELLS ELECTRONIC, INC. THIS DATA DOES NOT CONVEY MANUFACTURING RIGHTS TO ANY ITEM SHOWN.		WELLS ELECTRONICS SOUTH BEND, INDIANA
△	MAJOR	SEE TABLE 1		PART NAME FLATPACK CLIP
ALL OTHERS	MINOR			PART NO. 039-207-0XX
	LAST NUMBER USED WAS : 2	DO NOT SCALE		REV. H3
	NUMBERS IN CRITICAL & MAJOR DIMENSIONS ARE RANDOMLY PLACED AND HAVE NO SPECIFIC ORDER IN THE WAY THAT THEY HAVE BEEN NUMBERED.	TOLERANCES .XX ±.01(±0.25) .XXX ±.003(±0.13) .XXXX ----- ANGLE ±1°		SCALE 2X
	XX0-207-0XX			SHEET *
	PART NO.			CAD DWG NO. 039-207
				SUB-DR ON SERVER CARRIER