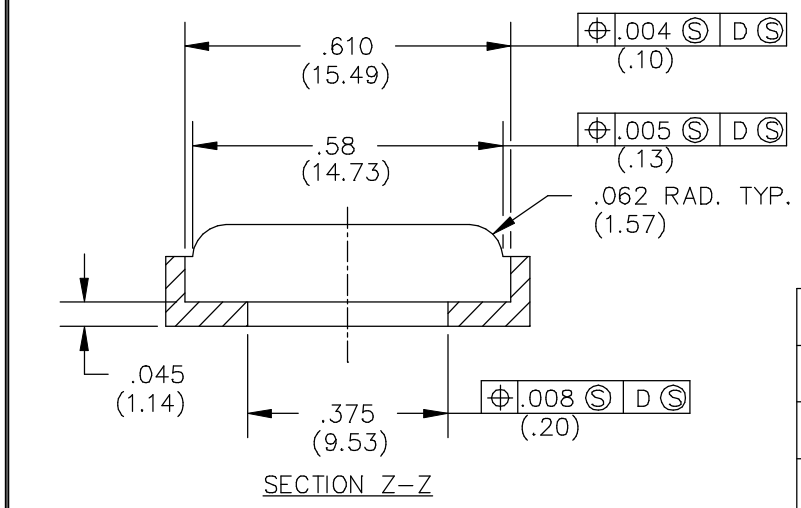
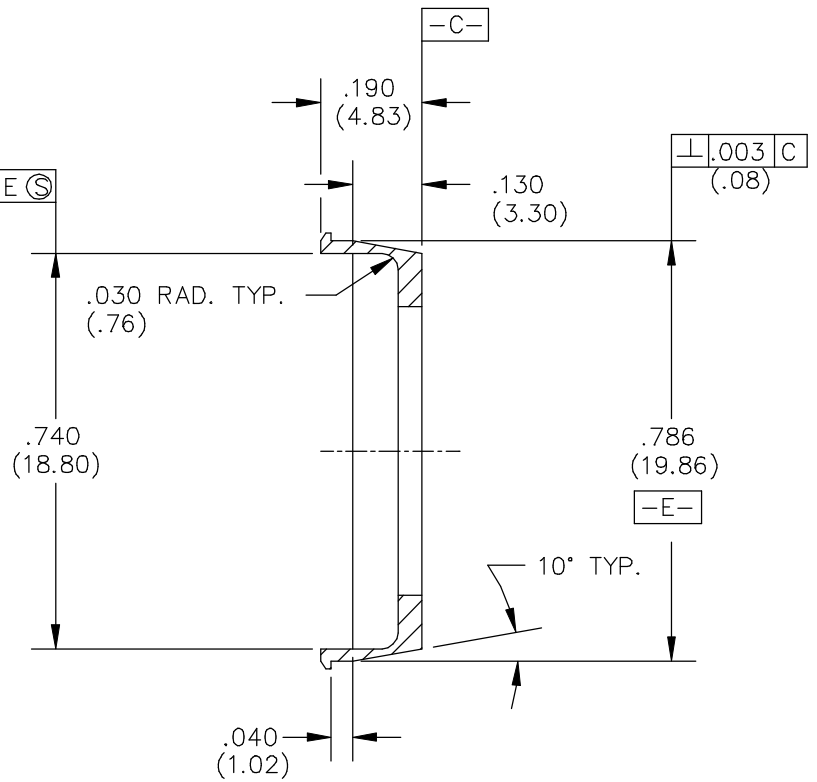
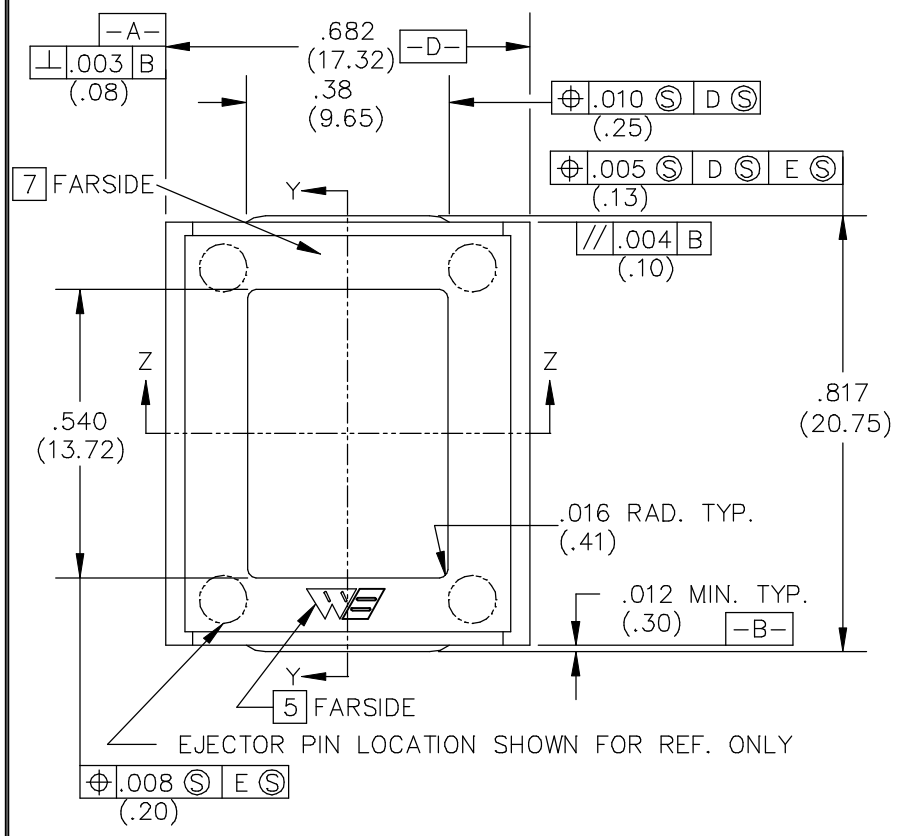


REV.	DATE	BY	ECN No.	REV.	DATE	BY	ECN No.	REV.	DATE	BY	ECN No.
N	7-25-88	KF	88-0203	N1	9-27-88	KM	88-0272	N2	2-6-96	CP	96-0107



SECTION Y-Y
TABLE 1
039-200-0XX

		MATERIAL [8]								
		1	2	3	4	5	6	7	8	9
COLOR		POLYSULFONE	POLYESTER	PPS		ESP	HIGH TEMP.			
0	NAT.	0211 (BEIGE)	0226 (BEIGE)							
1	PINK						0285			
2	BLUE									
3	GREEN									
4	BLACK				0297	0282				

A	C	P
-	X	-
PART NO. 039-200-0XX		

- 9 (XX.XX) DENOTES METRIC DIM'S. IN MILLIMETERS.
 8 MAT'LS SHOWN WITHOUT PART NUMBERS ARE FOR REF. ONLY AND REQUIRE ENGINEERING APPROVAL PRIOR TO USE.
 7 ALL CAVITIES TO BE IDENTIFIED LOCATE NUMBERS THIS AREA .002(0.05) HIGH.
 6 EJECTOR PIN MARKS TO BE FLUSH TO .005(0.13) BELOW SURFACE.
 5 WELLS LOGO LOCATED APPROX. AS SHOWN .06(1.52) HIGH. RAISED HEIGHT OF LOGO MUST NOT EXCEED TOLERANCE LIMIT OF PART.
 4 ALL CORNER RADII AND FILLETS SHALL BE .010(0.25) RAD. MAX. UNLESS SPECIFIED.
 3 PIN GATES MUST BREAK OFF WITHOUT LEAVING A PROJECTION GREATER THAN .005(0.13) OR A HOLE IN SIDEWALL WHERE GATE IS LOCATED.
 2 FLASH, FLOW LINES, SEAMS, EJECTOR MARKS, MOLD CAVITY NUMBERS, MOLD FINISH MARKS, AND GATES WHICH ARE NORMALLY PRODUCED IN MOLDING SHALL BE CONSIDERED IMPERFECTIONS AND BE CONTROLLED BY NOTE 1.
 1 IMPERFECTIONS ON ANY SURFACE ARE ACCEPTABLE UNDER THE FOLLOWING CONDITIONS, UNLESS OTHERWISE SPECIFIED. IMPERFECTIONS SHALL BE WITHIN THE TOLERANCE ZONE OF ANY SURFACE, BUT IF THE TOLERANCE ZONE IS GREATER THAN .005(0.13) THE IMPERFECTION SHALL NOT EXCEED .005(0.13).

CUSTOMER DRAWING

LEGEND	ITEM	PART NUMBER	QTY	DESCRIPTION
◇	CRITICAL	MATERIAL		WELLS ELECTRONICS SOUTH BEND, INDIANA PART NAME FLATPACK CLIP PART NO. 039-200-0XX REV. N2 SCALE 4X SHEET CAD DWG NO. 039-200C SUB-DIR ON SERVER CARRIERC
△	MAJOR	DRAWN FULMER	DATE 3-29-88	
ALL OTHERS	MINOR	CHECKED KM	DATE 3-29-88	
		PROJ. ENG. GR	DATE 3-30-88	
	LAST NUMBER USED WAS : 0	FINISH		
	NUMBERS IN CRITICAL & MAJOR DIMENSIONS ARE RANDOMLY PLACED AND HAVE NO SPECIFIC ORDER IN THE WAY THAT THEY HAVE BEEN NUMBERED.	DO NOT SCALE		
	XX0-00Z-6C0 PART NO.	TOLERANCES .XX ±.01(±0.25) .XXX ±.005(±0.13) .XXXX ----- ANGLE ±1°	CHIEF ENG. TL	DATE 3-30-88
			MFG. ENG. DL	DATE 3-30-88
			QUALITY WHH	DATE 3-30-88