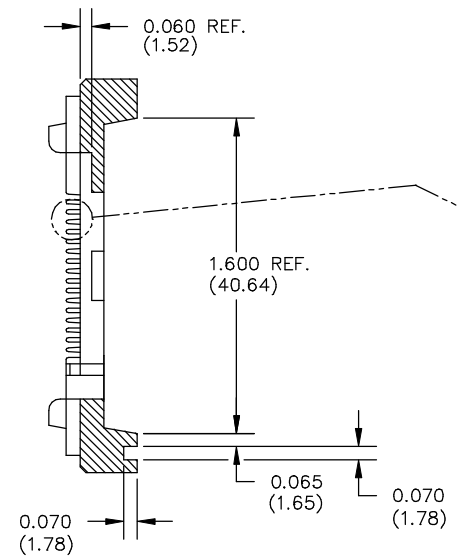
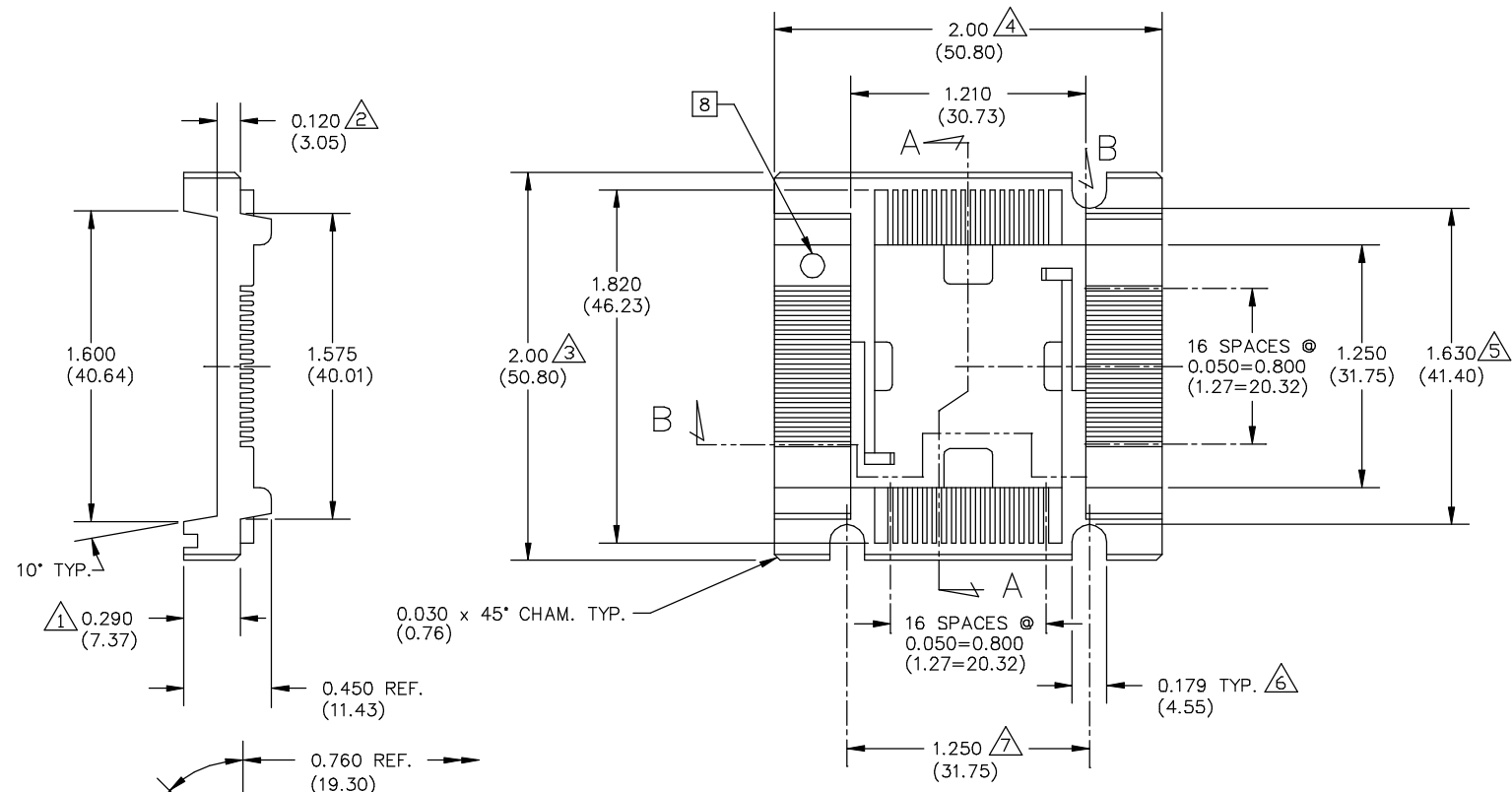
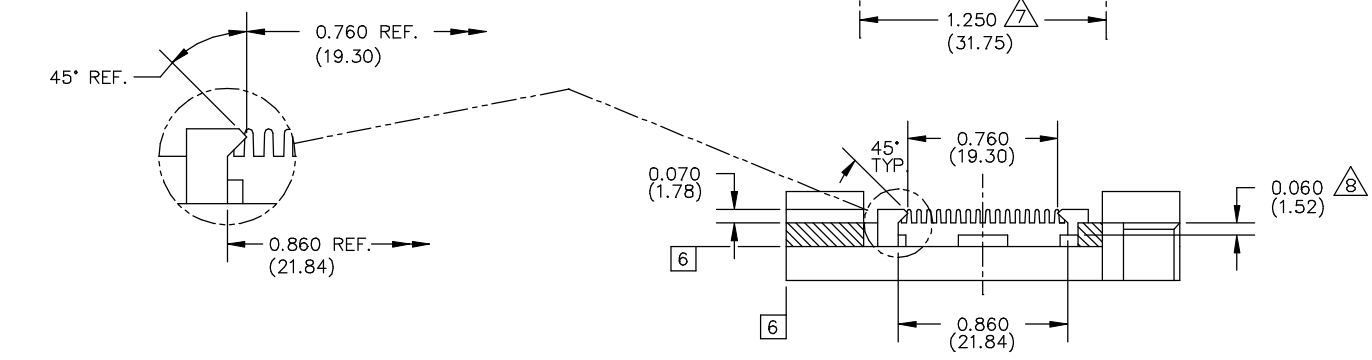


REV.	DATE	BY	REVISION						
E	10-6-88	KM	INC. ECN# 89-0356 REVISED & REDRAWN						
E1	5-11-83	CR	INC. ECN# 93-0191 REVISED & REDRAWN						
E2	11-7-98	KM	INC. ECN. #96-0623 REVISED & REPLOTED						
REV.	ECN #	REV.	ECN #	REV.	ECN #	REV.	ECN #	REV.	ECN #
D	0953								



SECTION A-A



SECTION B-B

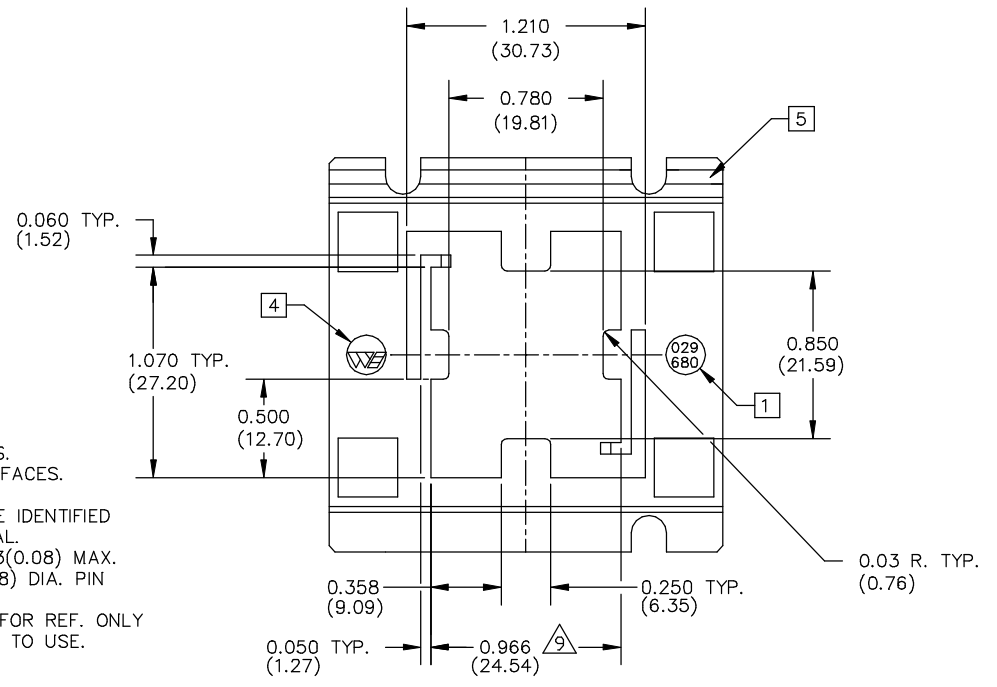


TABLE 1
029-680-0XX

		MATERIAL [3]								
		1	2	3	4	5	6	7	8	9
COLOR					HI TEMP ESD	ESD	HI TEMP			
0	NAT.	0211								
1	PINK					0285				
2	BLUE									
3	GREEN									
4	BLACK				0297	0282				

- [8.] REV. LEVEL ON PIN THIS AREA.
 - [7.] (XX.XX) DENOTES METRIC DIM'S IN MILLIMETERS.
 - [6.] .010(0.25) MAX. FLASH PERMITTED THESE SURFACES. (TYP. BOTH ENDS)
 - [5.] ALL CAVITIES OF MULTI CAVITY TOOLING TO BE IDENTIFIED LOCATE NUMBERS THIS AREA TO FIT. OPTIONAL.
 - [4.] WELLS LOGO (WE) .10(2.54) HIGH, RAISED .003(0.08) MAX. LOCATE APPROX. AS SHOWN (SET ON .20(5.08) DIA. PIN OPTIONAL.) EITHER END.
 - [3.] MATL'S SHOWN WITHOUT PART NUMBERS ARE FOR REF. ONLY AND REQUIRES ENGINEERING APPROVAL PRIOR TO USE.
 - 2. PARTS TO BE MOLDED IN ACCORDANCE TO WELLS SPECIFICATION #QCP-12.
 - [1.] PART NUMBER TO BE .05(1.27) HIGH, RAISED .001/.003 (0.03/0.08) APPROX. SET ON .20(5.08) DIA. PIN RECESSED .005(0.13) DP. MAX. LOCATE APPROX. AS SHOWN. EITHER END.
- NOTES: UNLESS OTHERWISE SPECIFIED

CUSTOMER DRAWING

LEGEND	ITEM	PART NUMBER	QTY	DESCRIPTION
◇	CRITICAL	MATERIAL		WELLS ELECTRONICS SOUTH BEND, INDIANA
△	MAJOR	SEE TABLE 1		
ALL OTHERS	MINOR	FINISH		68 LEAD QUADPACK ONE-PIECE CARRIER
		DO NOT SCALE		
		TOLERANCES		029-680-0XX
		ANGLE ±1°		

PART NO. 029-680-0XX