

A	C	P	REV	DATE	BY	ECN #	REV	DATE	BY	ECN #	REV	DATE	BY	ECN #
-	X	-	D1	1-22-97	CP	97-0036	D2	10-16-01	KM	10-16-01				

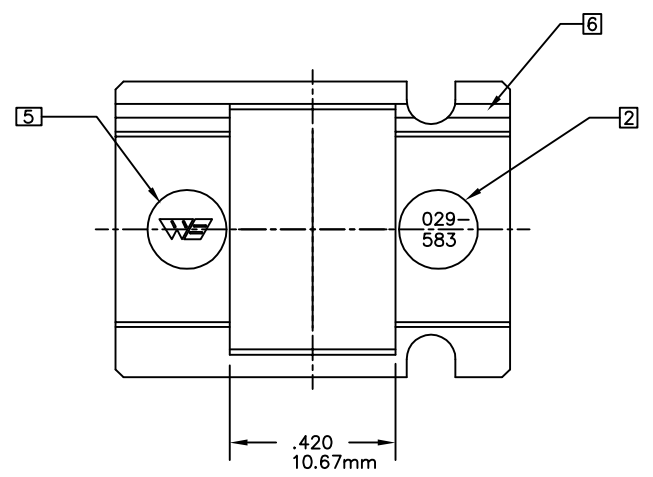
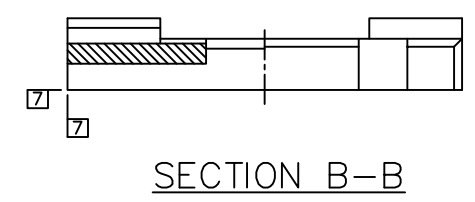
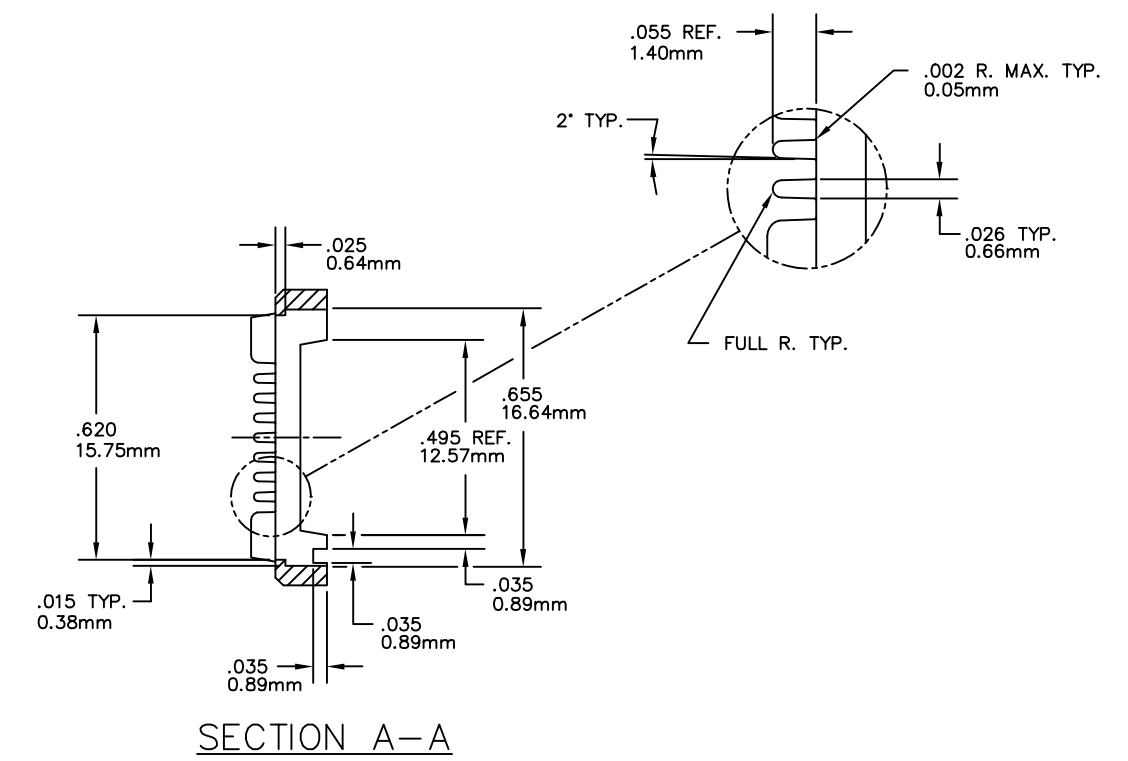
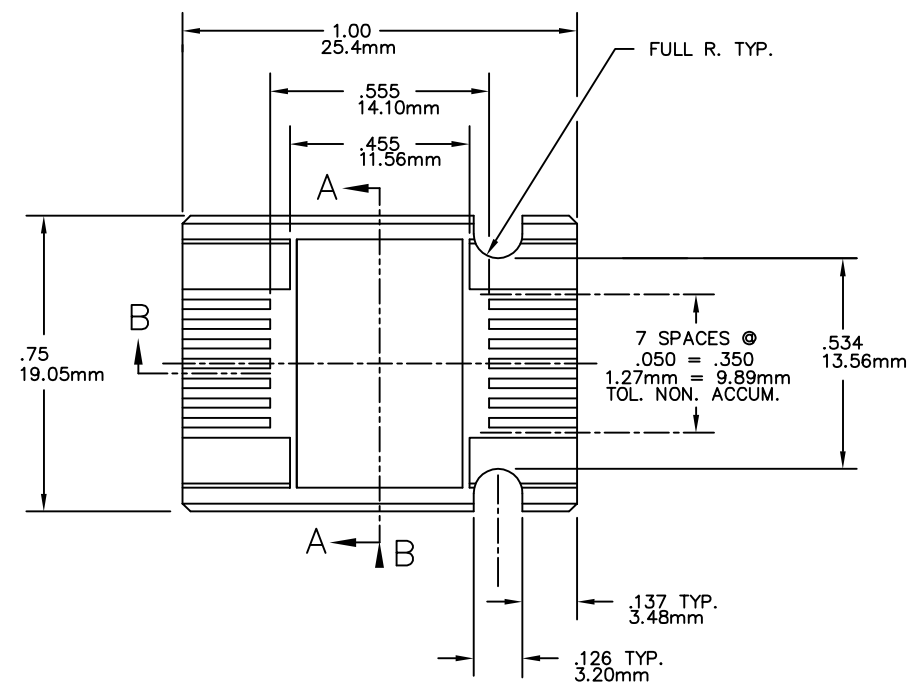
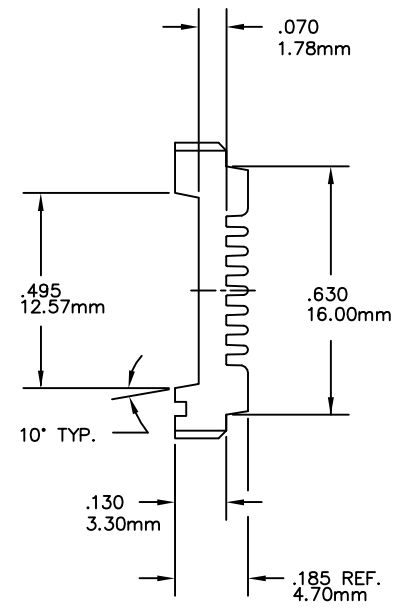


TABLE 1
029-583-0XX

		MATERIAL [4]								
		1	2	3	4	5	6	7	8	9
COLOR		PSO	PBT	PPS	HI ESD TEMP	ESD	HI TEMP			
0	NAT.	0211	0226	0246						
1	PINK						0285			
2	BLUE									
3	GREEN									
4	BLACK				0297					

- 9 "mm" DENOTES METRIC DIMENSIONS IN MILLIMETERS.
- 8 TRIM MOLD GATE(S) TO .01 MAX. BELOW SURFACE. GATE PROJECTIONS MUST REMAIN WITHIN PART TOLERANCES.
- 7 .010(0.25mm) MAX. FLASH PERMITTED THESE SURFACES. (TYP. BOTH ENDS)
- 6 ALL CAVITIES TO BE IDENTIFIED LOCATE NUMBERS THIS AREA .002(0.05mm) HIGH.
- 5 WELLS LOGO .10(2.54mm) HIGH, RAISED .003(0.08mm) MAX. LOCATE APPROX. AS SHOWN SET ON .20(5.08mm) DIA. PIN OPTIONAL.
- 4 MATL'S SHOWN WITHOUT PART NUMBERS ARE FOR REF. ONLY AND REQUIRES ENGINEERING APPROVAL PRIOR TO USE.
- 3 PARTS TO BE MOLDED IN ACCORDANCE TO WELLS SPECIFICATION QCI-12.
- 2 PART NUMBERS TO BE .05(1.27mm) HIGH RAISED .001/.003(0.03mm/0.08mm) APPROX. SET ON .20(5.08mm) DEEP MAX. LOCATE APPROX AS SHOWN.
- 1 USE RETENTION CLIP 039-584-0XX (FOR REF. ONLY)

CUSTOMER DRAWING

LEGEND		THIS DOCUMENT CONTAINS PROPRIETARY INFORMATION THAT IS THE SOLE PROPERTY OF WELLS-CTI. THIS INFORMATION IS TO BE HELD BY ITS RECIPIENT ON A CONFIDENTIAL BASIS, AND IS NOT TO BE DISCLOSED TO OTHERS OR USED WITHOUT WRITTEN CONSENT OF WELLS-CTI.	MATERIAL/FINISH	DRAWN	DATE	WELLS-CTI A subsidiary of PCD Inc. South Bend, Indiana, USA	
◇	CRITICAL		POLANDO	1-22-97			
0	TOTAL NO. OF ◇ USED		CHECKED	MLR	DATE		2-12-97
		DO NOT SCALE	REFERENCE	ENGINEER	DATE	PART NAME	
			PROJECT/SERIES	GR	2-13-97	16 LEAD	FLATPACK CARRIER
			TOLERANCES	ENG. SUPRV.	DATE	PART NUMBER	REV
SIZE	PROJECTION					029-583-0XX	D2
D						SCALE 4X	UNITS: in [mm]
						CAD NUMBER	SHEET 1 OF 1
						029-583C	