

REV.	DATE	BY	REVISION						
K1	6-11-92	CR	INC. ECN. #92-0320 REVISED & REPLOTTED.						
K2	8-11-97	SG	INC. ECN. #97-0809 REVISED & REPLOTTED						
REV.	ECN #	REV.	ECN #	REV.	ECN #	REV.	ECN #	REV.	ECN #

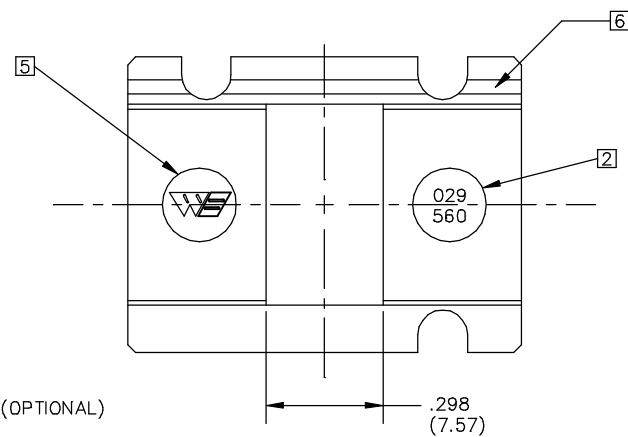
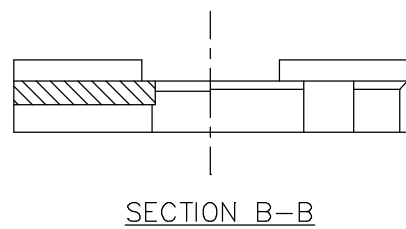
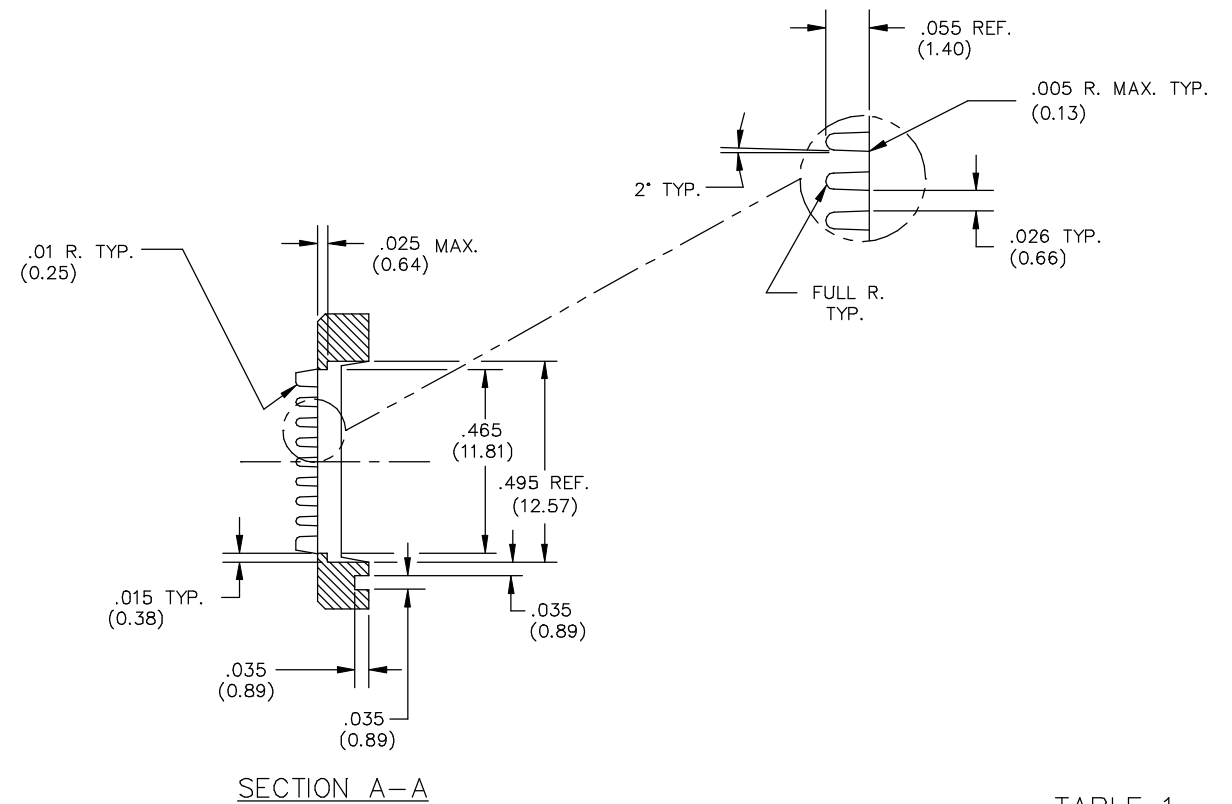
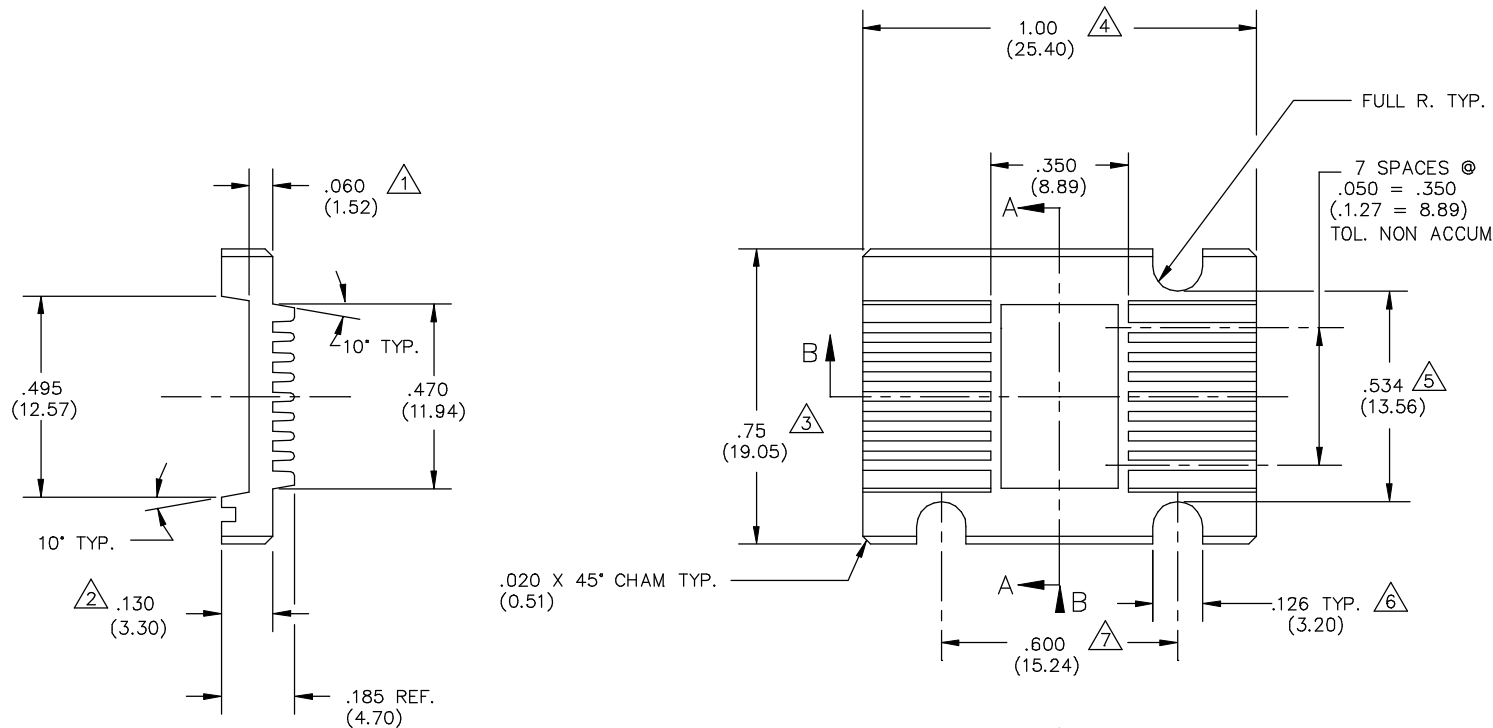


TABLE 1
029-560-0XX

COLOR	MATERIAL [4]								
	1	2	3	4	5	6	7	8	9
0 NAT.	PSU	PBT	PPS	HI TEMP ESD	ESD	HI TEMP			
1 PINK	0261	0226	0246			0285			
2 BLUE						0284			
3 GREEN									
4 BLACK				0297	0282				

CUSTOMER DRAWING

- 7 (XX.XX) DENOTES METRIC DIM'S IN MILLIMETERS.
 - [6] ALL CAVITIES TO BE IDENTIFIED. LOCATE NUMBERS THIS AREA .002(0.05) HIGH. (OPTIONAL)
 - [5] WELLS LOGO .10(2.54) HIGH, RAISED .003(0.08) MAX. LOCATE APPROX. AS SHOWN, SET ON .20(5.08) DIA. PIN. (OPTIONAL) (EITHER END)
 - [4] MATERIALS SHOWN WITHOUT PART NUMBERS ARE FOR REF. ONLY AND REQUIRE ENGINEERING APPROVAL PRIOR TO USE.
 - 3 PARTS TO BE MOLDED IN ACCORDANCE TO #QCP-12.
 - [2] PART NUMBER TO BE .05(1.27) HIGH, RAISED .001/.003(0.03/0.08) APPROX. SET ON .20(5.08) DIA. PIN RECESSED .003(0.08) DP. MAX. LOCATE APPROX. AS SHOWN. (EITHER END)
 - 1 USE RETENTION CLIP 039-566-XXX (FOR REF. ONLY).
- NOTES: UNLESS OTHERWISE SPECIFIED

LEGEND	ITEM	PART NUMBER	QTY	DESCRIPTION
◇	CRITICAL	MATERIAL	DRAWN	WELLS ELECTRONICS SOUTH BEND, INDIANA
△	MAJOR	RESKE	6-11-92	
ALL OTHERS	MINOR	SEE TABLE 1	CHECKED	PART NAME 16 LEAD FLATPACK CARRIER
			KEN M.	
		LAST NUMBER USED WAS : 7	PROJ. ENL.	PART NO. 029-560-0XX
			DATE	
		NUMBERS IN CRITICAL & MAJOR DIMENSIONS ARE RANDOMLY PLACED AND HAVE NO SPECIFIC ORDER IN THE WAY THAT THEY HAVE BEEN NUMBERED.	CHEF ENL.	REV. K2
			DATE	
		TOLERANCES .XX ± .01(±0.25) .XXX ± .005(±0.13) .XXXX ± .001(±0.025) ANGLE ±1°	MFG. ENL.	SCALE 4X
			DATE	SHEET *
			QUALITY	CAD DWG NO. 029-560C
			DATE	SUB-DIR ON SERVER CARRIER.VC

PART NO.
029-560-0XX