

Property of
Sensata Technologies

REV.	DATE	BY	REVISION				
B3	5-12-92	C.R.	INC. ECN #92-0221 REVISED & REPLOTED				
B4	7-02-92	K.M.	INC. ECN #92-0365 REVISED & REPLOTED				
B5	8-02-92	K.M.	INC. ECN #97-0529 REVISED & REPLOTED				
REV.	ECN #	REV.	ECN #	REV.	ECN #	REV.	ECN #
B2	90-0360						

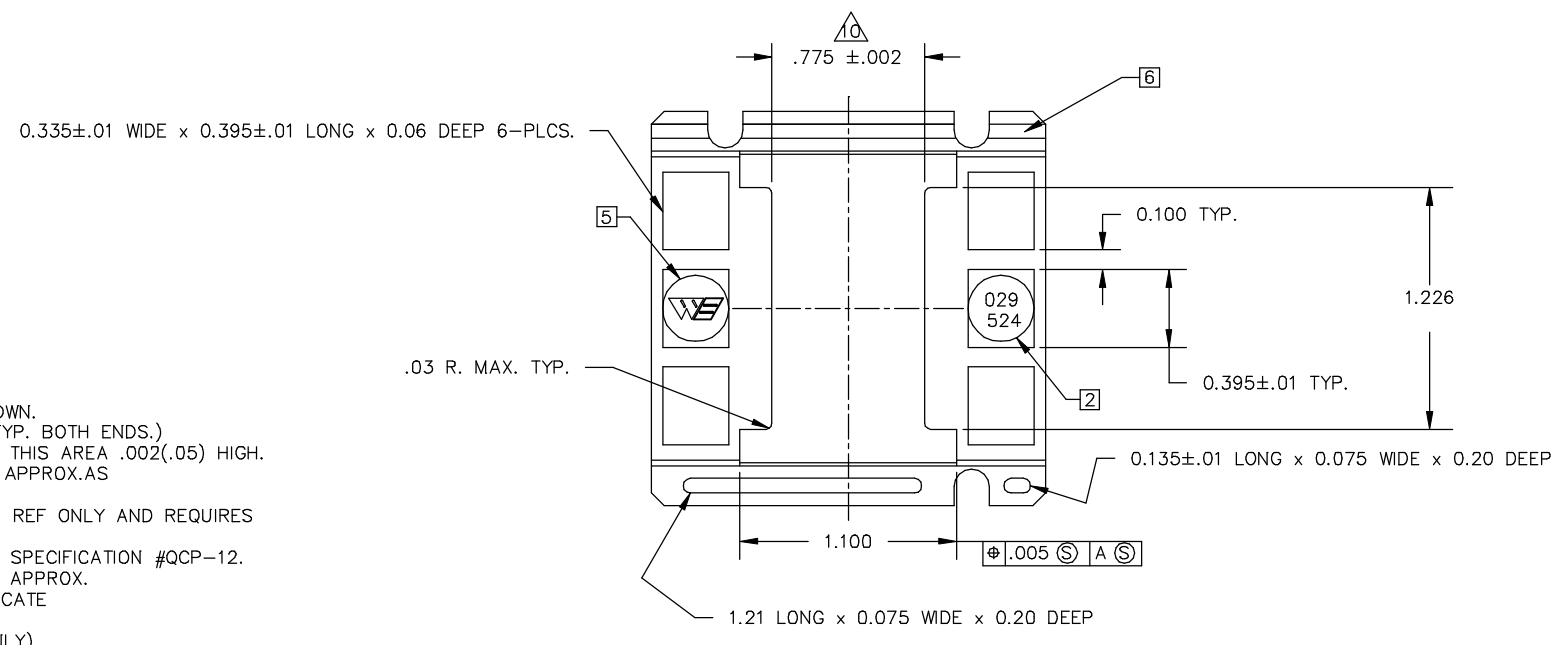
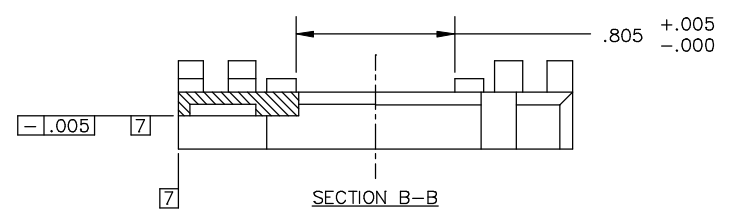
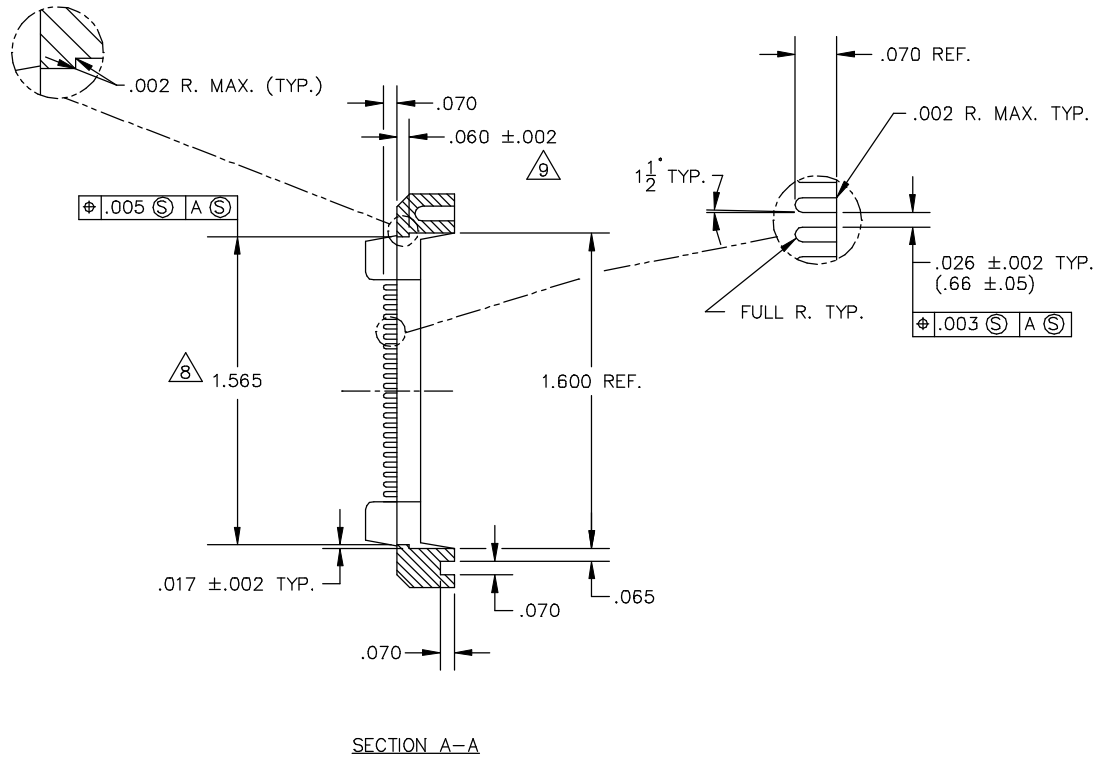
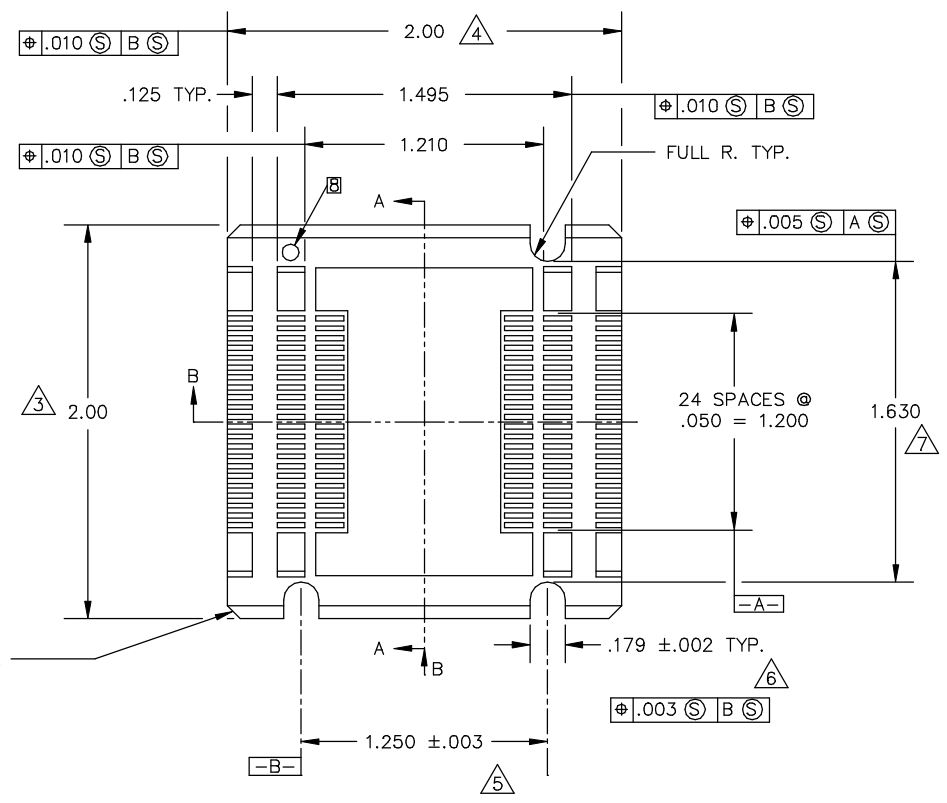
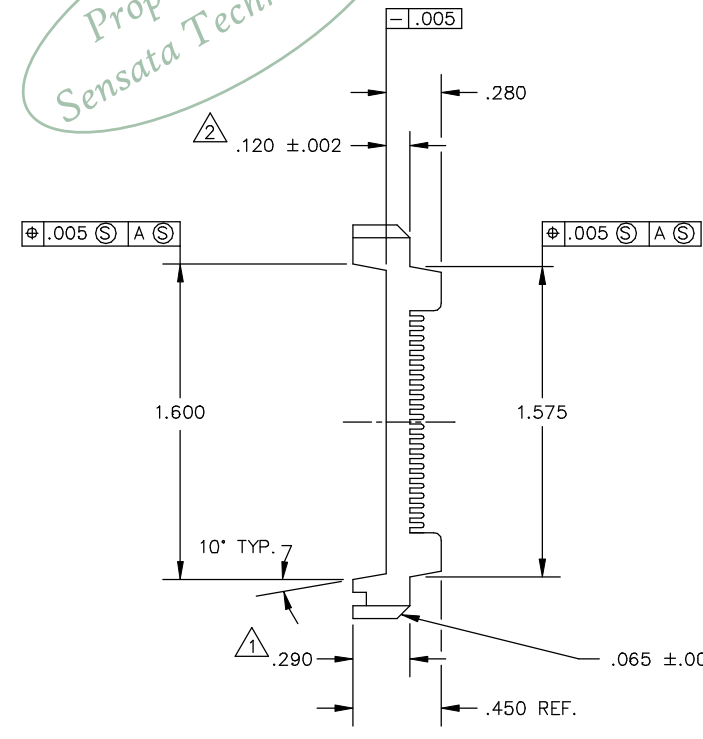


TABLE 1
029-524-0XX

		MATERIAL [4]								
		1	2	3	4	5	6	7	8	9
COLOR		PSO	PBT	PPS	HI TEMP ESD	ESD	HI TEMP			
0	NAT.	0211								
1	PINK						0285			
2	BLUE									
3	GREEN									
4	BLACK				0297	0282				
5	GREY									

- 8 DRAWING REVISION LEVEL TO BE APPROX. AS SHOWN.
 - 7 .002 MAX. FLASH PERMITTED THESE SURFACES (TYP. BOTH ENDS.)
 - 6 ALL CAVITIES TO BE IDENTIFIED LOCATE NUMBERS THIS AREA .002(.05) HIGH.
 - 5 WELLS LOGO .10 HIGH RAISED .003 MAX. LOCATE APPROX. AS SHOWN SET ON .20 DIA. PIN OPTIONAL.
 - 4 MATL'S SHOWN WITHOUT PART NUMBERS ARE FOR REF ONLY AND REQUIRES ENGINEERING APPROVAL PRIOR TO USE.
 - 3 PARTS TO BE MOLDED IN ACCORDANCE TO WELLS SPECIFICATION #QCP-12.
 - 2 PART NUMBER TO BE .05 HIGH RAISED .001/.003 APPROX. SET ON .20 DIA. PIN RECESSED .005 DP. MAX LOCATE APPROX. AS SHOWN.
 - 1 USE RETENTION CLIP 039-207-XXX (FOR REF. ONLY)
- NOTES: UNLESS OTHERWISE SPECIFIED

LEGEND	ITEM	PART NUMBER	QTY	DESCRIPTION
◇	CRITICAL	MATERIAL		
△	MAJOR	DRAWN SITAR	8-2-90	WELLS ELECTRONICS SOUTH BEND, INDIANA
		CHECKED HOHULIN	DATE 8-6-90	PART NAME 50 LEAD
		ALL OTHERS MINOR		FLATPACK CARRIER
		PROL. ENG. RALSTIN	DATE 8-6-90	PART NO. 029-524-0XX
		LAST NUMBER USED WAS : 10		REV. B5
		DO NOT SCALE	DATE 8-6-90	
		NUMBERS IN CRITICAL & MAJOR DIMENSIONS ARE RANDOMLY PLACED AND HAVE NO SPECIFIC ORDER IN THE WAY THAT THEY HAVE BEEN NUMBERED.		
		TOLERANCES .XX ±.01(±0.25) .XXX ±.005(±.13) .XXXX ----- ANGLE ±1°		
		SCALE 2X		
		QUALITY		
		CAD DWG NO. 029-524		SUB-DIR ON SERVER CARRIER

PART NO.
029-524-0XX