

REV	DATE	BY	ECN #	REV	DATE	BY	ECN #	REV	DATE	BY	ECN #
B1	8-13-90	ES	90-0379	B2	7-2-92	KM	92-0364	B3	4-1-98	SG	98-0292

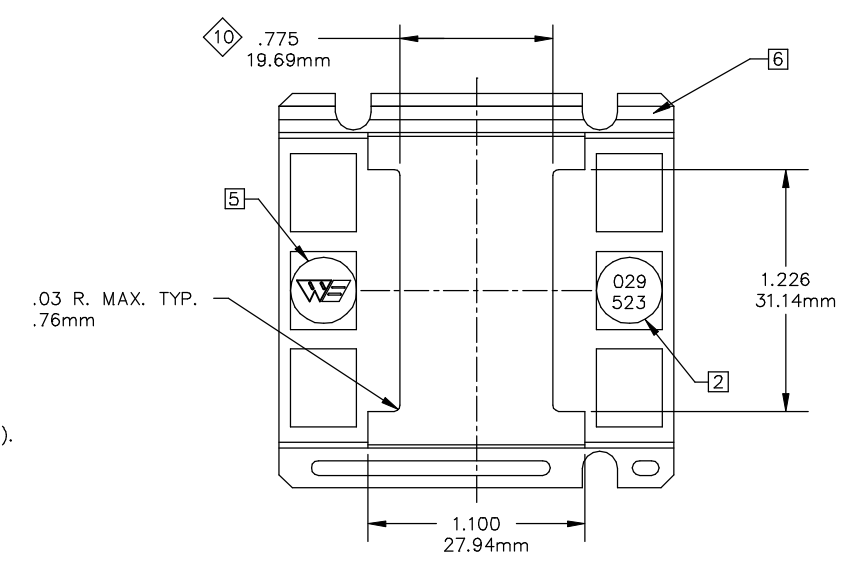
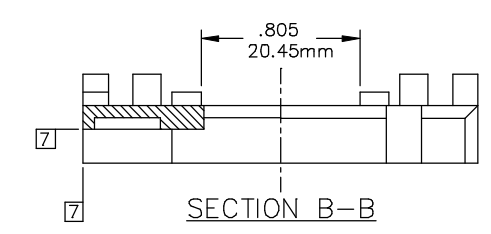
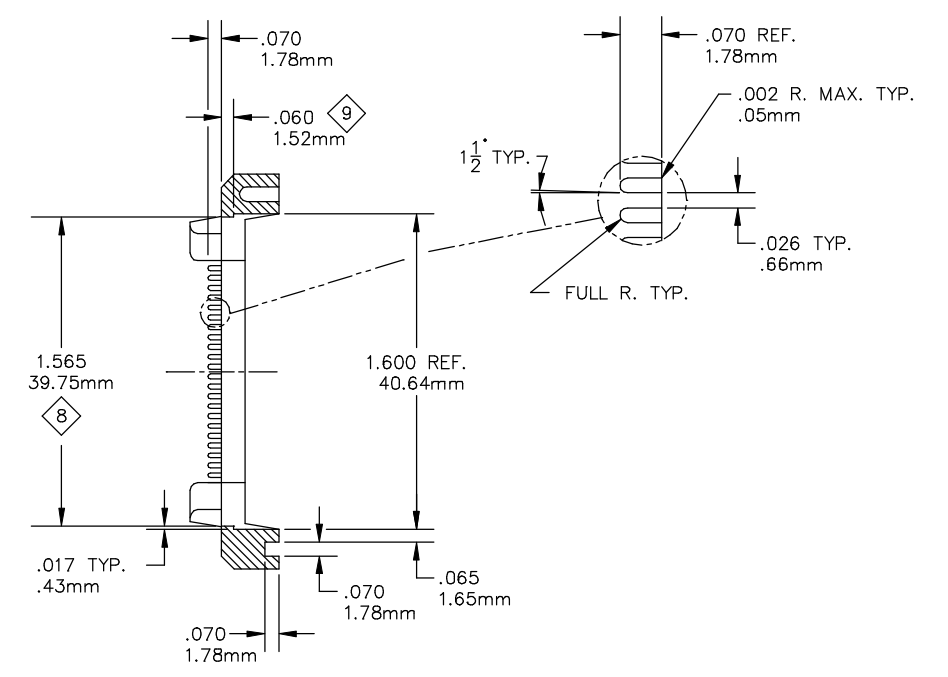
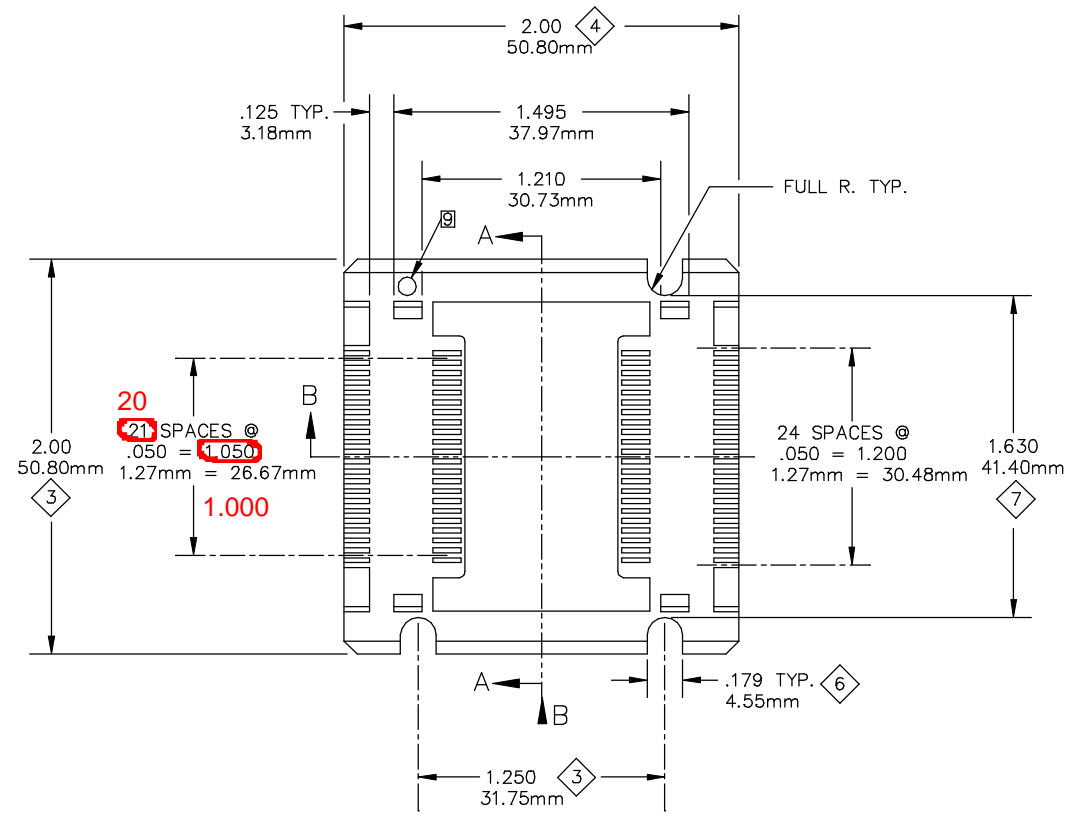
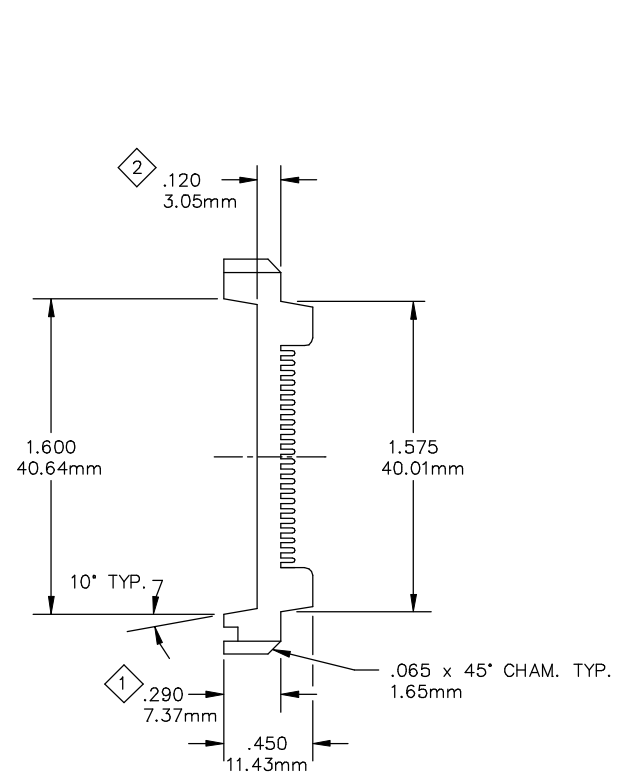


TABLE 1
029-523-0XX

		MATERIAL [4]								
		1	2	3	4	5	6	7	8	9
COLOR										
0	NAT.	0211								
1	PINK						0285			
2	BLUE									
3	GREEN									
4	BLACK				0297					
5	GREY									

- 8 DRAWING REVISION LEVEL TO BE APPROX. AS SHOWN.
- 8 "mm" DENOTES METRIC DIMS. IN MILLIMETERS.
- 7 .010(.25mm) MAX. FLASH PERMITTED THESE SURFACES (TYP. BOTH ENDS.)
- 6 ALL CAVITIES TO BE IDENTIFIED LOCATE NUMBERS THIS AREA .002(.05) HIGH. (OPTIONAL).
- 5 WELLS LOGO .10(2.54mm) HIGH RAISED .003(.08mm) MAX. LOCATE APPROX. AS SHOWN SET ON .20(5.08mm) DIA. PIN OPTIONAL. EITHER END.
- 4 MATL'S SHOWN WITHOUT PART NUMBERS ARE FOR REF ONLY AND REQUIRES ENGINEERING APPROVAL PRIOR TO USE.
- 3 PARTS TO BE MOLDED IN ACCORDANCE TO WELLS SPECIFICATION #QCI-12.
- 2 PART NUMBER TO BE .05(1.27mm) HIGH RAISED .001/.003(.03mm/.08mm) APPROX. SET ON .20(5.08mm) DIA. PIN RECESSED .005(.13mm) DP. MAX LOCATE APPROX. AS SHOWN.
- 1 USE RETENTION CLIP 039-207-XXX (FOR REF. ONLY)

CUSTOMER DRAWING

LEGEND		THIS DOCUMENT CONTAINS PROPRIETARY INFORMATION THAT IS THE SOLE PROPERTY OF WELLS-CTI. THIS INFORMATION IS TO BE HELD BY ITS RECIPIENT ON A CONFIDENTIAL BASIS, AND IS NOT TO BE DISCLOSED TO OTHERS OR USED WITHOUT WRITTEN CONSENT OF WELLS-CTI.	MATERIAL/FINISH	DRAWN	DATE	 South Bend Indiana USA
◇	CRITICAL		SITAR	8-13-90		
10	TOTAL NO. OF ◇ USED		CHECKED	DATE	PART NAME	
			HOHULIN	8-13-90	44 LEAD 2 PIECE FLATPACK CARRIER	
			ENGINEER	DATE	PART NUMBER	
			RALSTIN	8-13-90	029-523-0XX	
			ENG. SUPRV.	DATE	SCALE 2X	
			TL	8-23-90	UNITS: in [mm]	
SIZE	PROJECTION	TOLERANCES	MOLDING	DATE	CAD NUMBER	
D		.XX ±.01 ±0.25mm .XXX ±.005 ±0.13mm .XXXX ±.001 ±0.05mm ANGLE ±1°			029-523C	
		DO NOT SCALE			SHEET 1 OF 1	

B4
B3