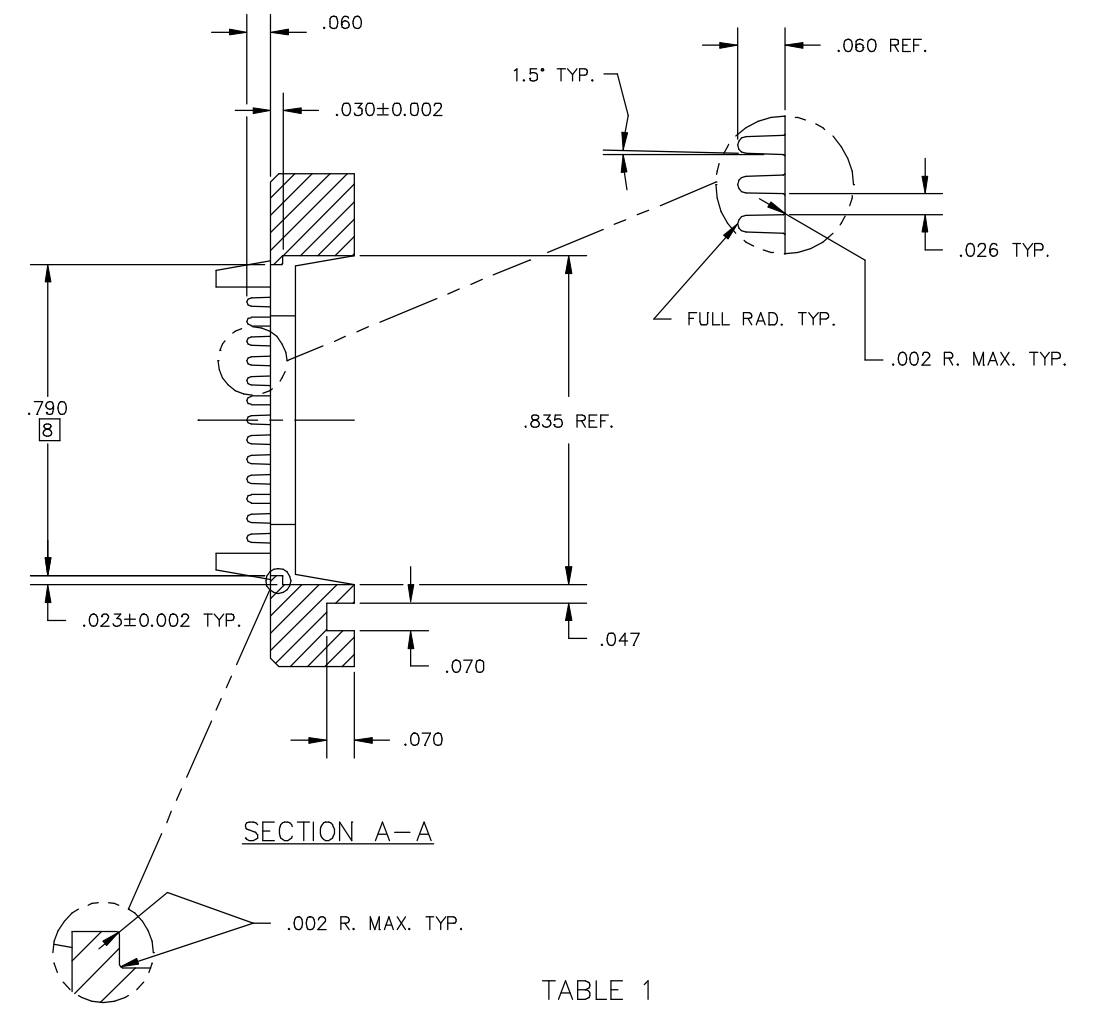
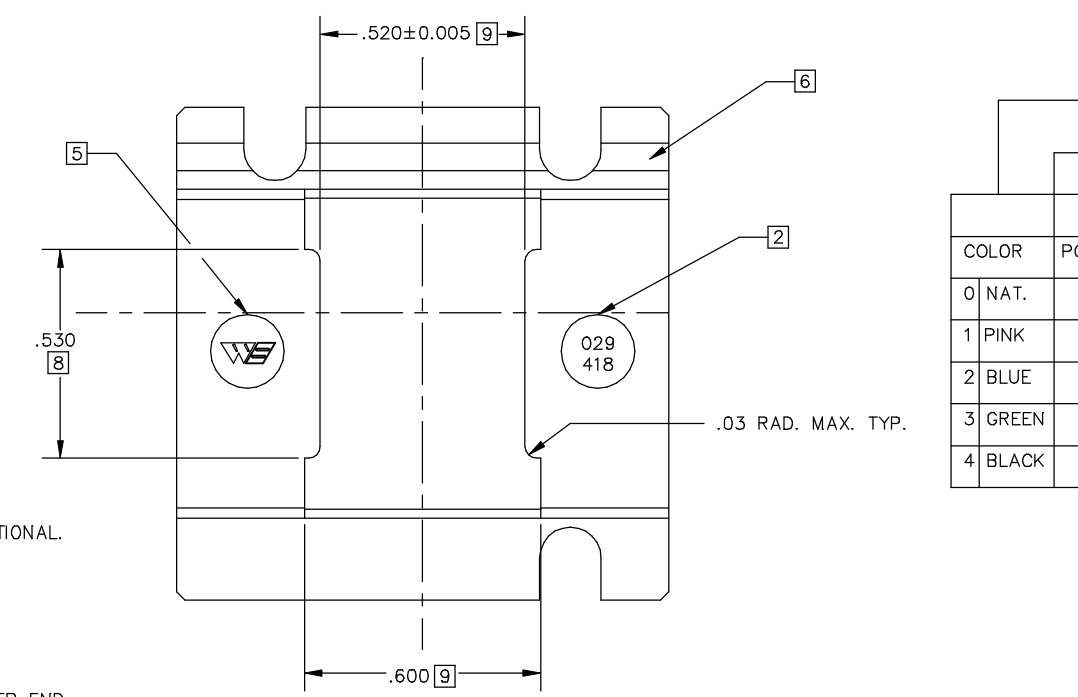
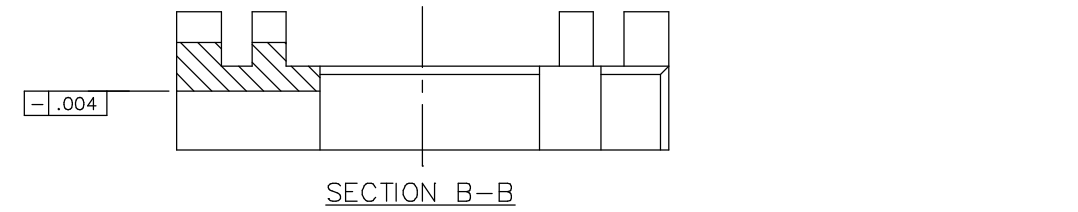
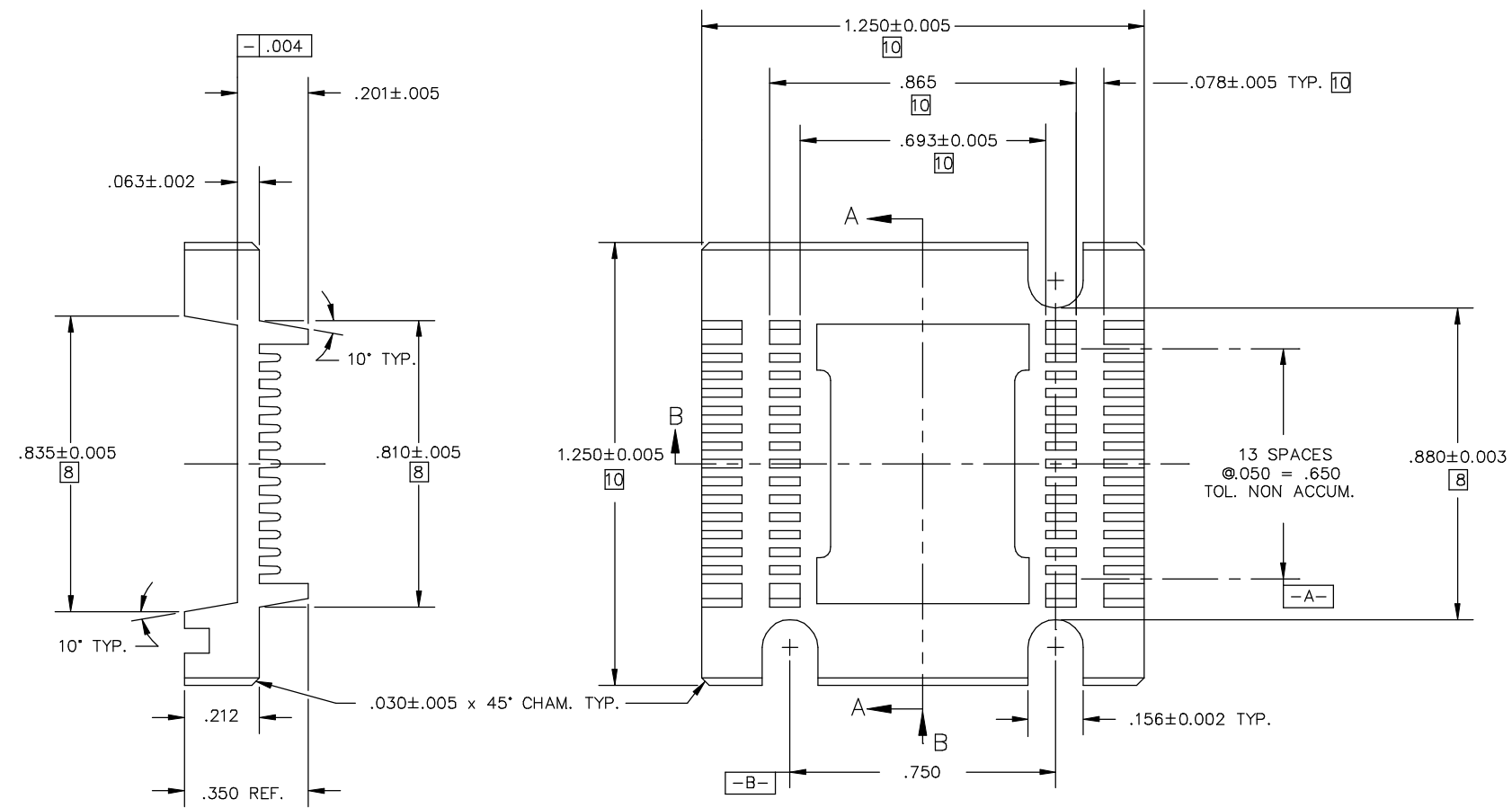


REV.	DATE	BY	REVISION
A	3-16-82	CR	INC. ECN #92-0222 REVISED & REPLOTED
A1	3-24-87	NL	INC. ECN #97-0214 REVISED & REPLOTED

REV.	ECN #	REV.	ECN #	REV.	ECN #	REV.	ECN #	REV.	ECN #



SECTION A-A

TABLE 1

029-418-0XX

		MATERIAL [4]								
		1	2	3	4	5	6	7	8	9
COLOR		POLYSULFONE	POLYESTER	PPS	HI TEMP ESD	ESD	HIGH TEMP.			
0 NAT.		0211 (BEIGE)								
1 PINK							0285			
2 BLUE										
3 GREEN										
4 BLACK					0297	0282				

- [10]  $\text{Ø} .010 \text{ (S) A (S)}$
- [9]  $\text{Ø} .005 \text{ (S) B (S)}$
- [8]  $\text{Ø} .005 \text{ (S) A (S)}$

7 PARTS TO BE MOLDED IN ACCORDANCE TO WELLS SPECIFICATION # QCI-12.  
 6 ALL CAVITIES TO BE IDENTIFIED LOCATE NUMBERS THIS AREA .002 HIGH OPTIONAL.  
 5 WELLS LOGO .10 HIGH, RAISED .003 MAX. LOCATE APPROX. AS SHOWN SET ON .187 DIA. PIN (OPTIONAL) EITHER END.  
 4 MATL'S SHOWN WITHOUT PART NUMBERS ARE FOR REF. ONLY AND REQUIRE ENGINEERING APPROVAL PRIOR TO USE.  
 3 TRIM MOLD GATE(S) TO .01 MAX. BELOW SURFACE. PROJECTIONS MUST REMAIN WITHIN PART TOLERANCES.  
 2 PART NUMBER TO BE .05 HIGH, RAISED .001/.003 APPROX. SET ON .187 DIA. PIN RECESSED .005 DEEP MAX. LOCATE APPROX. AS SHOWN EITHER END.  
 1 USE RETENTION CLIP 039-200-XXX (FOR REF. ONLY).

NOTES: UNLESS OTHERWISE SPECIFIED

LEGEND	ITEM	PART NUMBER	QTY	DESCRIPTION
◇	CRITICAL	SEE TABLE 1		WELLS ELECTRONICS SOUTH BEND, INDIANA
△	MAJOR			
	ALL OTHERS MINOR			28 LEAD FLATPACK CARRIER
	LAST NUMBER USED WAS : 0			PART NO. 029-418-0XX
	NUMBERS IN CRITICAL & MAJOR DIMENSIONS ARE RANDOMLY PLACED AND HAVE NO SPECIFIC ORDER IN THE WAY THAT THEY HAVE BEEN NUMBERED.			REV. A1
				SCALE 4X
				SHEET 029-418
				SUB-DIR ON SERVER CARRIER

A C P PART NO. 029-418-0XX