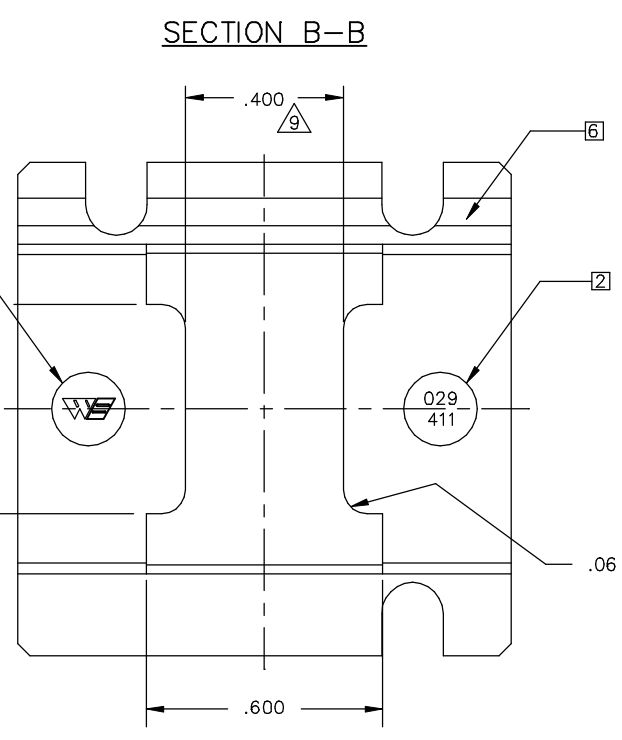
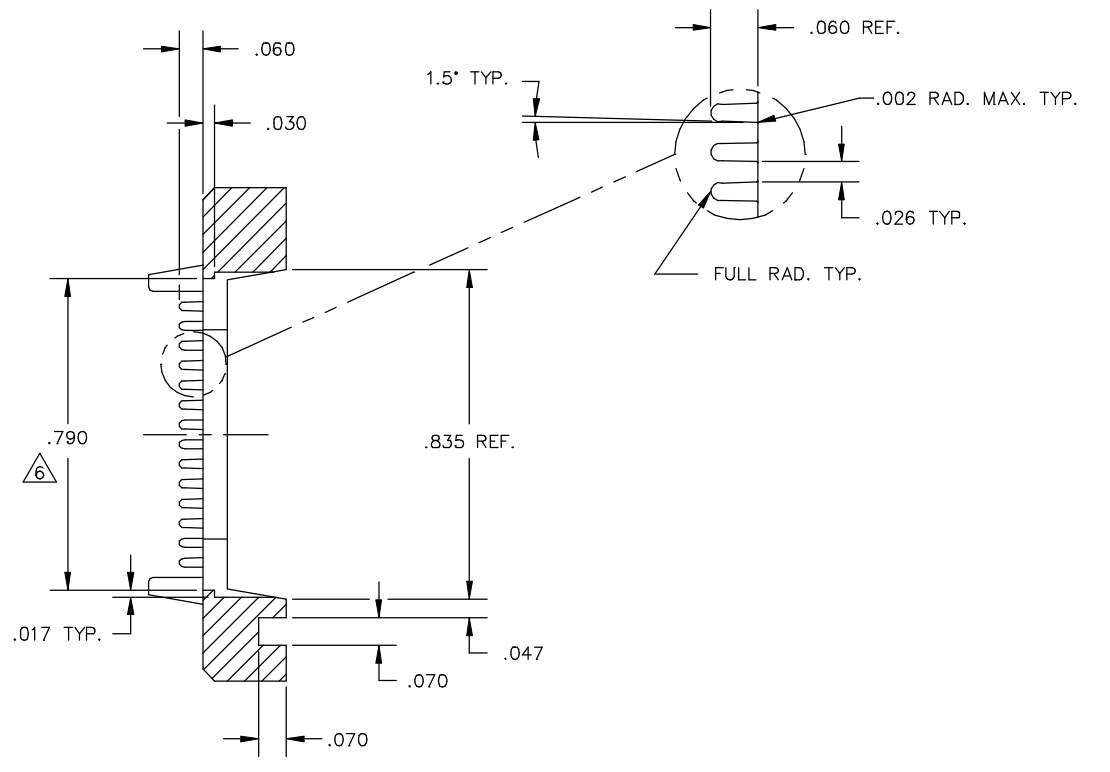
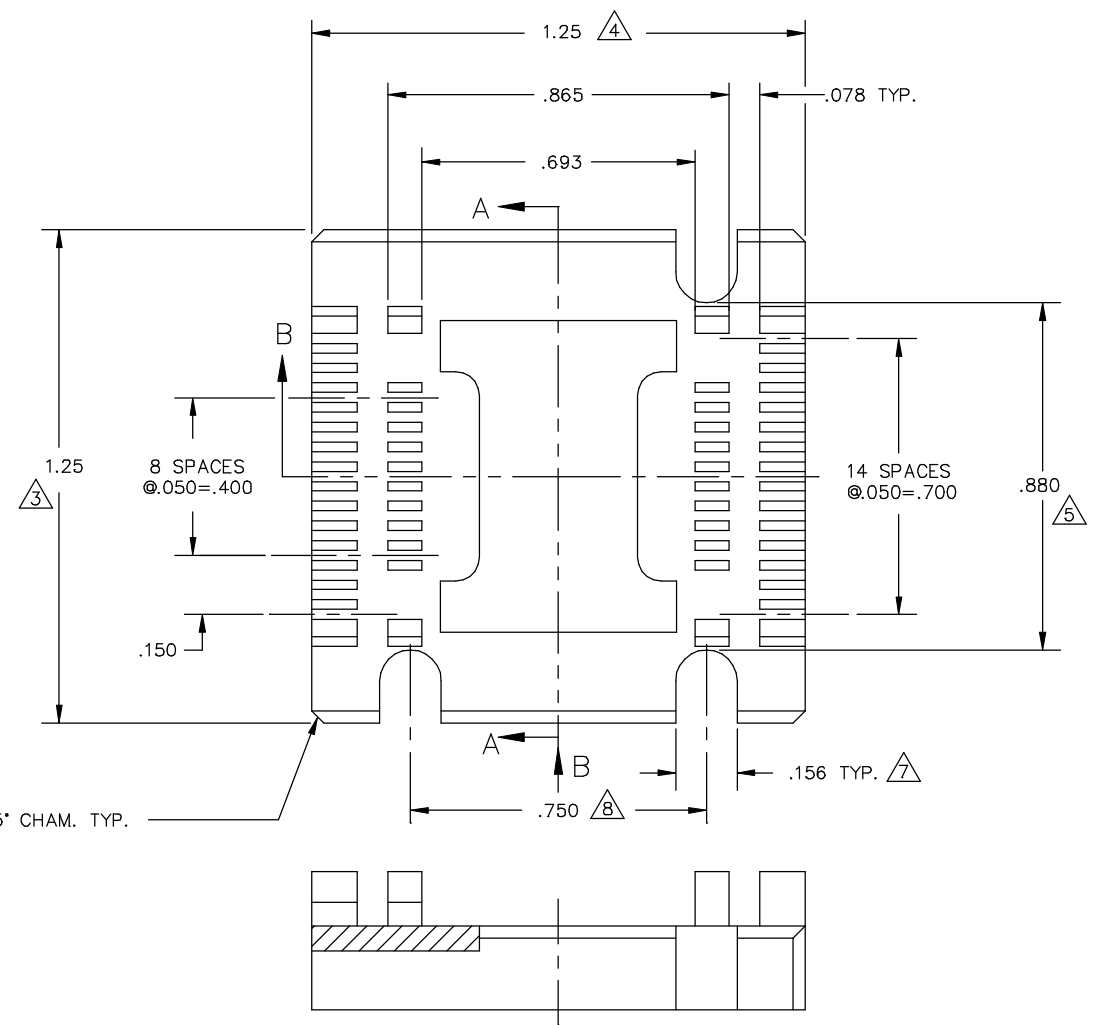
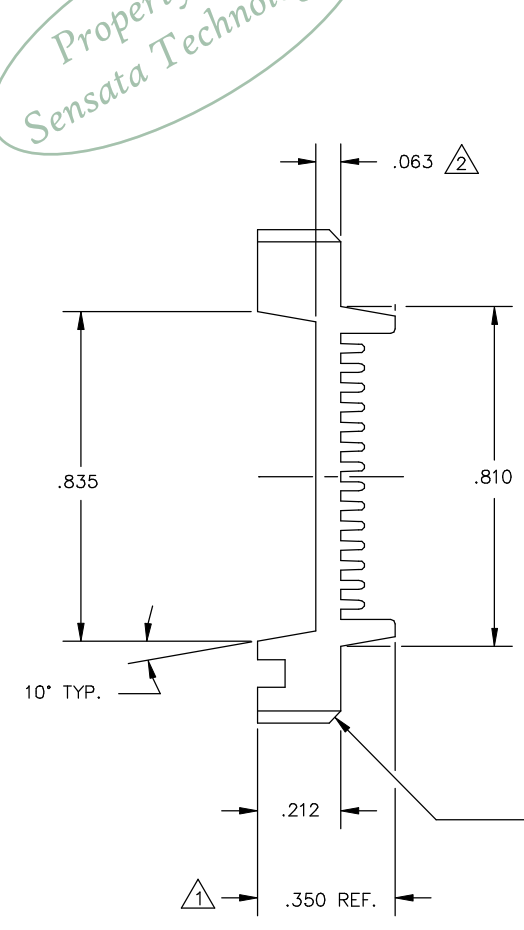


Property of
Sensata Technologies

REV.	DATE	BY	ECN No.	REV.	DATE	BY	ECN No.	REV.	DATE	BY	ECN No.
C1	5-1-95	MR	95-0219								



029-411-OXX

TABLE 1

CUSTOMER DRAWING

	MATERIAL [4]								
	1	2	3	4	5	6	7	8	9
COLOR	POLYSULFONE	POLYESTER	PPS	HIGH TEMP. ESD	ESD	HIGH TEMP.			
0 NAT.	0211 (BEIGE)								
1 PINK									
2 BLUE									
3 GREEN									
4 BLACK									

- 7 PARTS TO BE MOLDED IN ACCORDANCE TO WELLS SPECIFICATION #QCI-12.
- [6] ALL CAVITIES TO BE IDENTIFIED LOCATE NUMBERS THIS AREA .002 HIGH. (OPTIONAL)
- [5] WELLS LOGO .10 HIGH, RAISED .003 MAX. LOCATE APPROX AS SHOWN SET ON .187 DIA. PIN. (OPTIONAL) EITHER END.
- [4] MATL'S SHOWN WITHOUT PART NUMBERS ARE FOR REF. ONLY AND REQUIRE ENGINEERING APPROVAL PRIOR TO USE.
- 3 TRIM MOLD GATE(S) TO .01 MAX. BELOW SURFACE. GATE PROJECTIONS MUST REMAIN WITHIN PART TOLERANCES.
- [2] PART NUMBER TO BE .05 HIGH, RAISED .001/.003 APPROX. SET ON .187 DIA. PIN RECESSED .005 DEEP MAX. LOCATE APPROX. AS SHOWN. EITHER END.
- 1 USE RETENTION CLIP 039-200-XXX (FOR REF. ONLY).

LEGEND	ITEM	PART NUMBER	QTY	DESCRIPTION
◇	CRITICAL	SEE TABLE 1	DATE	WELLS ELECTRONICS SOUTH BEND, INDIANA
△	MAJOR		5-1-95	
	ALL OTHERS	DO NOT SCALE	DATE	PART NAME 18 LEAD FLATPACK CARRIER
	MINOR		5-3-95	
	LAST NUMBER USED WAS : 9	TOLERANCES .XX ±.01 .XXX ±.006 .XXXX --- ANGLE ±1°	DATE	PART NO. 029-411-OXX
	NUMBERS IN CRITICAL & MAJOR DIMENSIONS ARE RANDOMLY PLACED AND HAVE NO SPECIFIC ORDER IN THE WAY THAT THEY HAVE BEEN NUMBERED.		5-3-95	
		SCALE 4X	DATE	REV. C1
			5-9-95	
		SHEET	DATE	SUB-DIR ON SERVER CARRIERC
			5-8-95	
			CAD DWG NO. 029-411C	

A
C
P
PART NO.
029-411-OXX