

REV.	DATE	BY	REVISION
F1	1-16-97	CP	INC. ECN. #97-0021 REVISED & REDRAWN.
F2	8-30-97	SG	INC. ECN. #97-0528 REVISED & REDRAWN.

REV.	ECN #	REV.	ECN #	REV.	ECN #	REV.	ECN #	REV.	ECN #

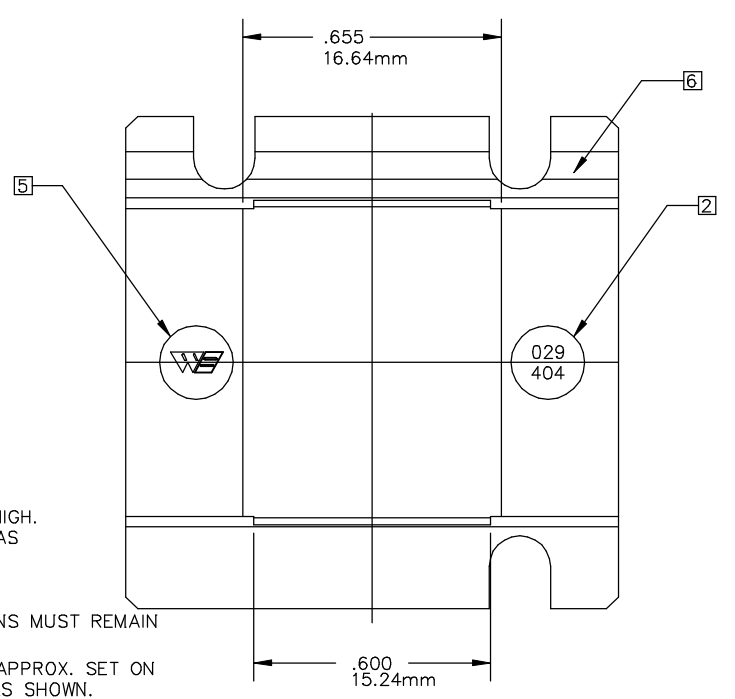
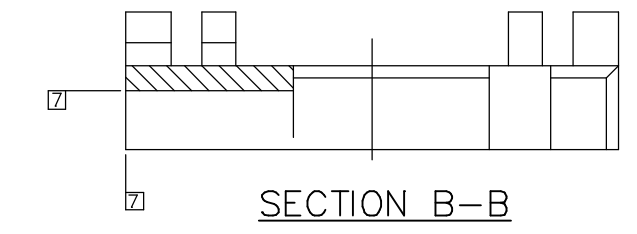
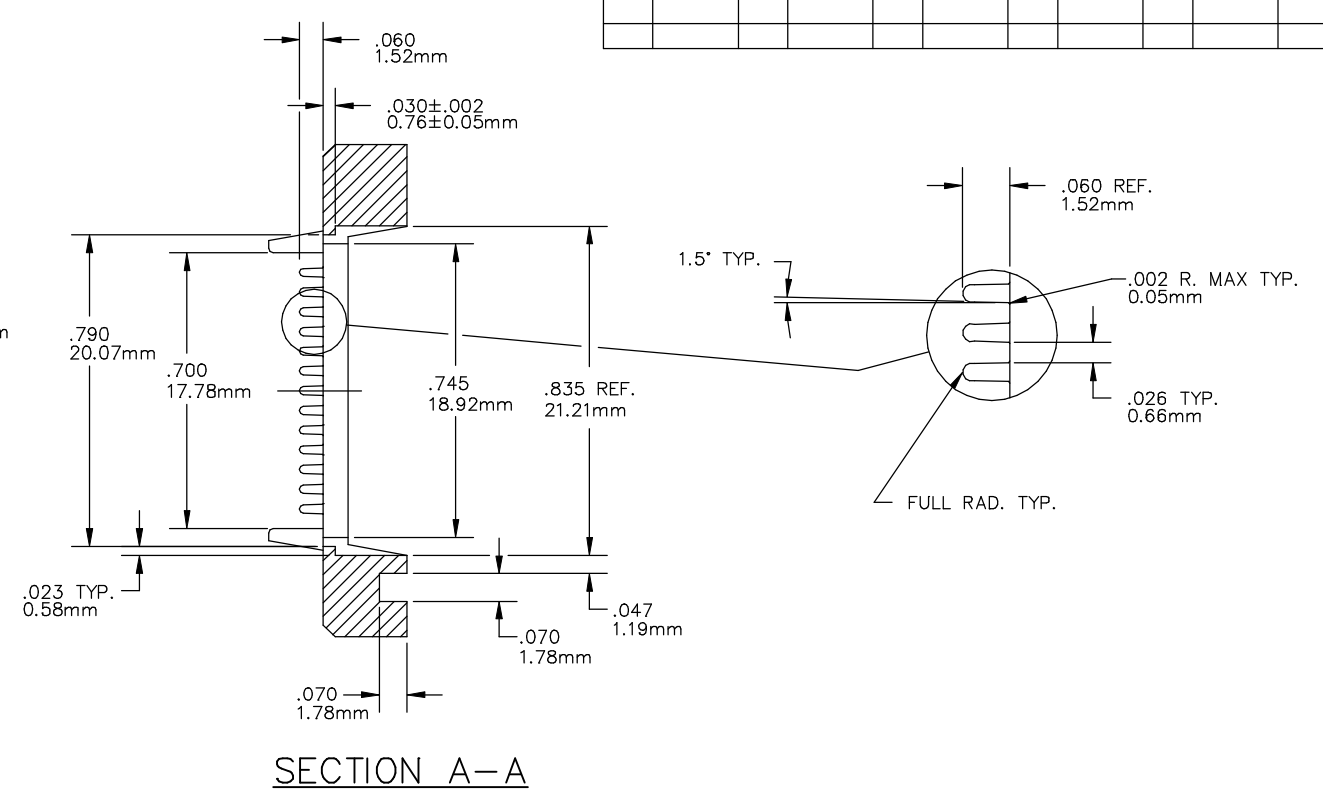
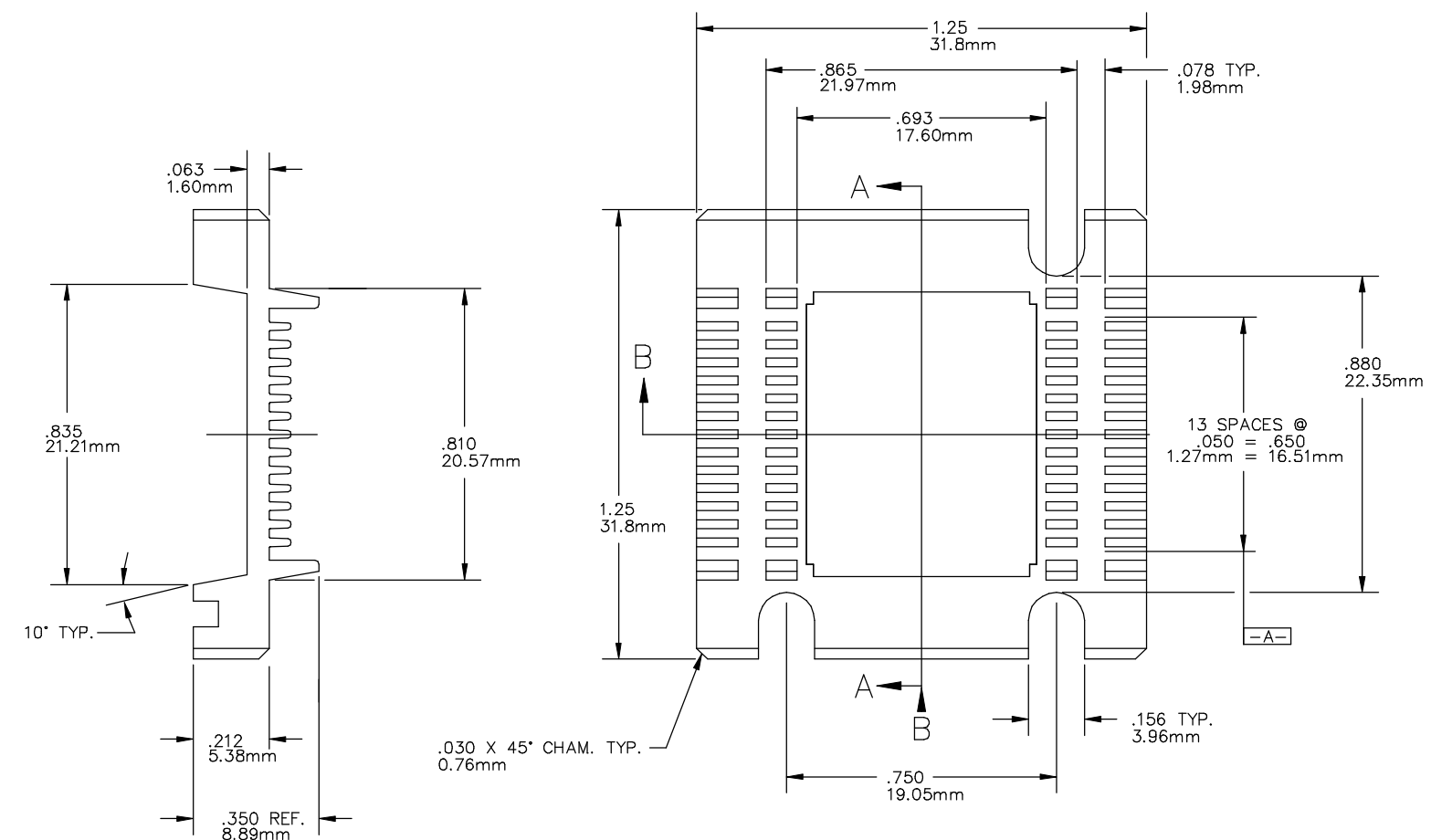


TABLE 1
029-404-0XX

COLOR	MATERIAL [4]								
	1	2	3	4	5	6	7	8	9
0 NAT.	PSO	PBT	PPS	HI TEMP ESD	ESP	HI TEMP			
1 PINK	0211	0226	0246			0285			
2 BLUE									
3 GREEN									
4 BLACK				0297	0282				

9. "mm" DENOTES METRIC DIMENSIONS IN MILLIMETERS.
8. PARTS TO BE MOLDED IN ACCORDANCE TO WELLS QCI-12.
7. .002(0.05mm) MAX. FLASH PERMITTED THESE SURFACES. (TYP BOTH ENDS)
6. ALL CAVITIES TO BE IDENTIFIED. LOCATE NUMBERS THIS AREA .002(0.05mm) HIGH.
5. WELLS LOGO .10(2.54mm) HIGH, RAISED .003(0.08mm) MAX. LOCATE APPROX. AS SHOWN SET ON .187(4.75mm) DIA. PIN. (OPTIONAL).
4. MAT'L SHOWN WITHOUT PART NUMBERS ARE FOR REF. ONLY AND REQUIRE ENGINEERING APPROVAL PRIOR TO USE.
3. TRIM MOLD GATE(S) TO .01(0.25mm) MAX. BELOW SURFACE. GATE PROJECTIONS MUST REMAIN WITHIN PART TOLERANCES.
2. PART NUMBER TO BE .05(1.27mm) HIGH, RAISED .001/.003(0.03mm/0.08mm) APPROX. SET ON .187(4.75mm) DIA. PIN RECESSED .005(0.13mm) DEEP MAX. LOCATE APPROX. AS SHOWN.
1. USE RETENTION CLIP 039-200-XXX (FOR REF. ONLY)
NOTES: UNLESS OTHERWISE SPECIFIED

CUSTOMER DRAWING

LEGEND	ITEM	PART NUMBER	QTY	DESCRIPTION
◇	CRITICAL	MATERIAL	DRAWN	
△	MAJOR	SEE TABLE 1	POLANDO	
□	MINOR	FINISH	MLR	
		LAST NUMBER USED WAS : 0	GR	
		NUMBERS IN CRITICAL & MAJOR DIMENSIONS ARE RANDOMLY PLACED AND HAVE NO SPECIFIC ORDER IN THE WAY THAT THEY HAVE BEEN NUMBERED.	DO NOT SCALE	PART NAME 28 LEAD FLATPACK CARRIER PART NO. 029-404-0XX SCALE 4X SHEET 029-404C
		TOLERANCES	DATE	REV. F2
		.XX±.01 ±0.25mm	DATE	
		.XXX±.006 ±0.15mm	DATE	
		ANGLE ±1°	DATE	

PART NO. 029-404-0XX