

| REV. | DATE    | BY   | REVISION                              |      |       |      |       |
|------|---------|------|---------------------------------------|------|-------|------|-------|
| S    | 10-8-90 | KM   | INC. ECN. #90-0476 REVISED & REPLOTED |      |       |      |       |
|      |         |      |                                       |      |       |      |       |
|      |         |      |                                       |      |       |      |       |
| REV. | ECN #   | REV. | ECN #                                 | REV. | ECN # | REV. | ECN # |
|      |         |      |                                       |      |       |      |       |

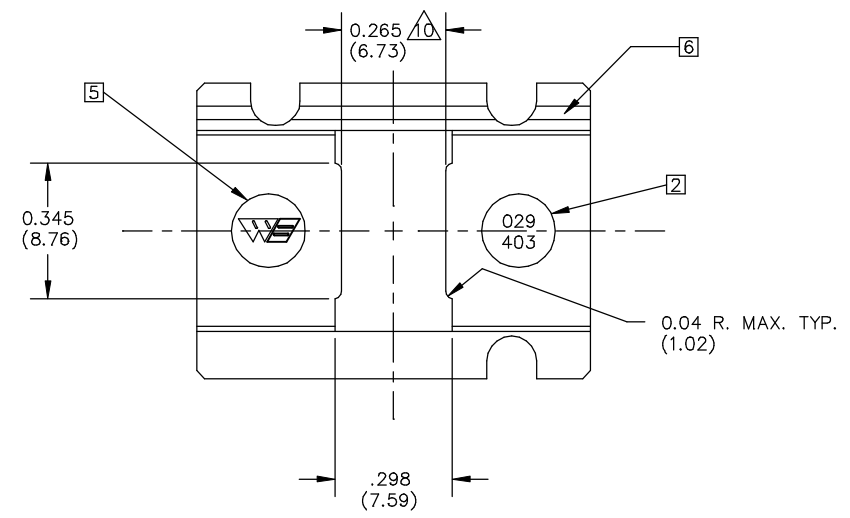
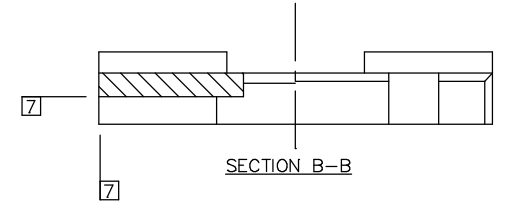
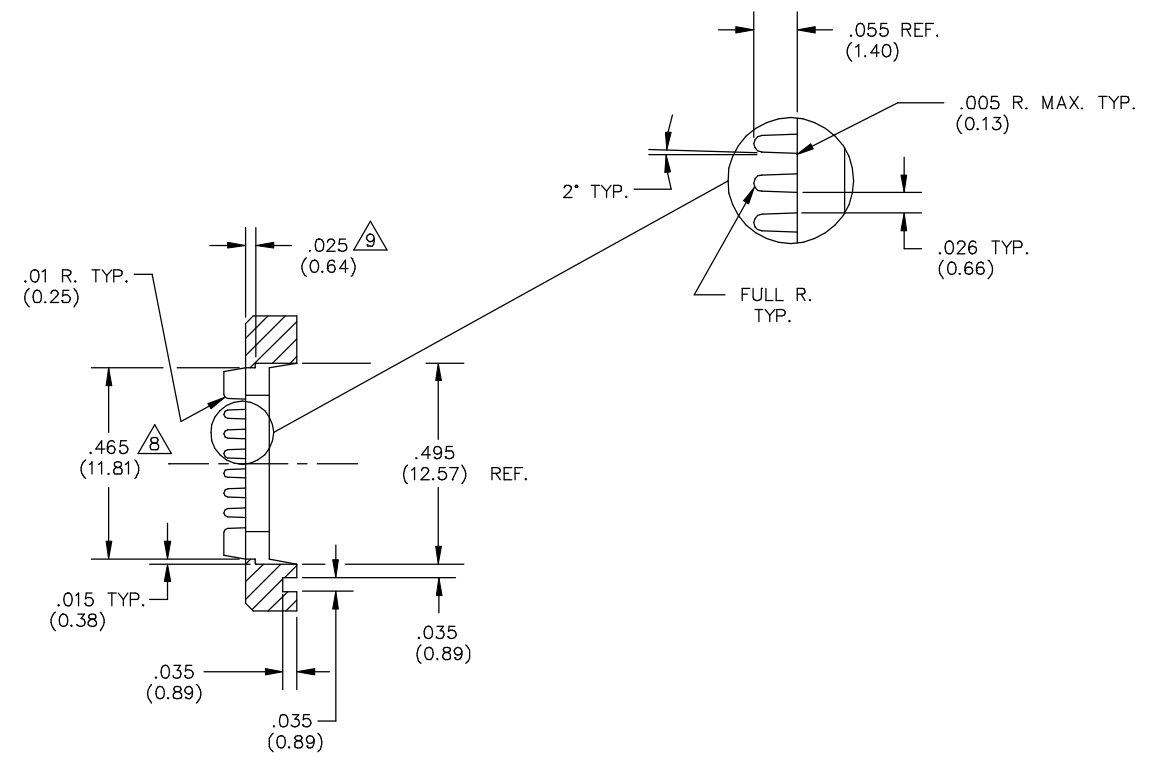
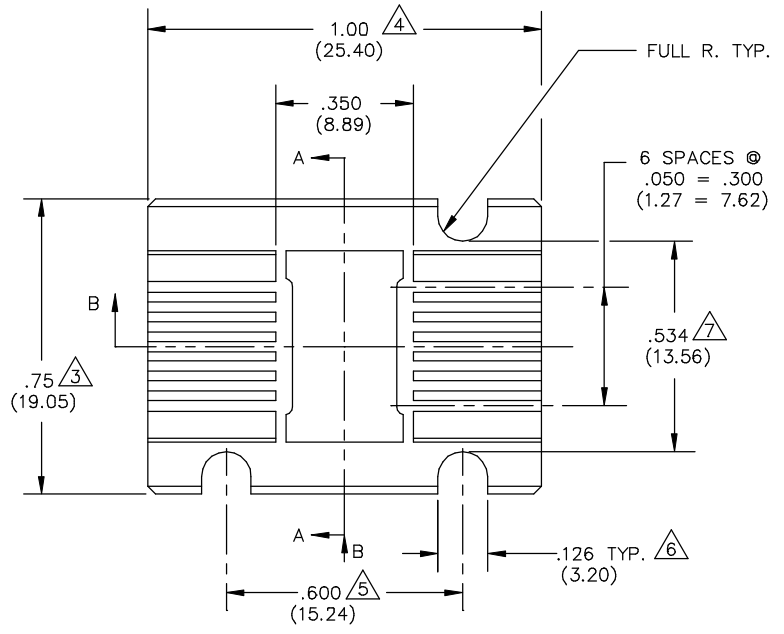
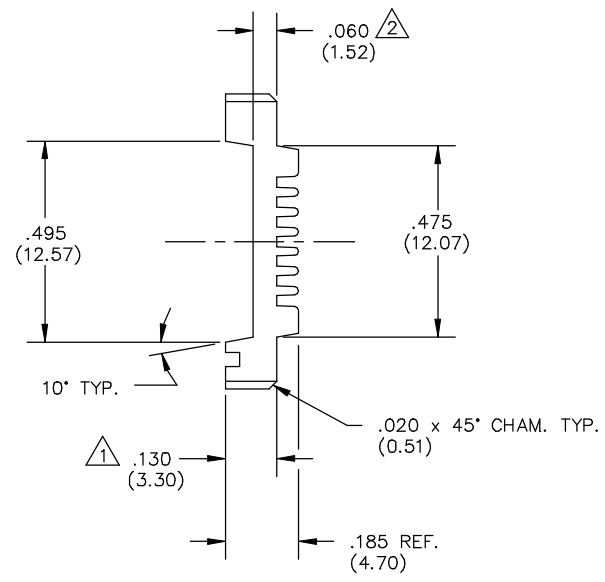


TABLE 1  
029-403-0XX

| COLOR   | MATERIAL [4] |      |     |             |      |         |   |   |   |
|---------|--------------|------|-----|-------------|------|---------|---|---|---|
|         | 1            | 2    | 3   | 4           | 5    | 6       | 7 | 8 | 9 |
| 0 NAT.  | PSO          | PBT  | PPS | HI TEMP ESD | ESD  | HI TEMP |   |   |   |
| 1 PINK  | 0211         | 0226 |     |             |      | 0285    |   |   |   |
| 2 BLUE  | 0262         |      |     |             |      | 0284    |   |   |   |
| 3 GREEN |              |      |     |             |      |         |   |   |   |
| 4 BLACK |              |      |     | 0297        | 0282 |         |   |   |   |

CUSTOMER DRAWING

- 8 (XX.XX) DENOTES METRIC DIM'S IN MILLIMETERS
  - [7] .010(0.25) MAX. FLASH PERMITTED THESE SURFACES (TYP. BOTH ENDS)
  - [6] ALL CAVITIES OF MULTI-CAVITY TOOLING TO BE IDENTIFIED.
  - [5] LOCATE NUMBERS THIS AREA TO FIT. (OPTIONAL)
  - [5] WELLS LOGO .10(2.54) HIGH, RAISED .003(0.08) MAX. LOCATE APPROX. AS SHOWN, SET ON .20(5.08) DIA. PIN. (OPTIONAL) EITHER END.
  - [4] MATERIALS SHOWN WITHOUT PART NUMBERS ARE FOR REF. ONLY AND REQUIRE ENGINEERING APPROVAL PRIOR TO USE
  - 3 PARTS TO BE MOLDED IN ACCORDANCE TO WELLS SPECIFICATION #QCP-12.
  - [2] PART NUMBER TO BE .05(1.27) HIGH, RAISED .001/.003(0.03/0.08) APPROX. SET ON .20(5.08) DIA. PIN RECESSED .003(0.08) DP. MAX. LOCATE APPROX. AS SHOWN. EITHER END.
  - 1 USE RETENTION CLIP 039-566-XXX (FOR REF. ONLY)
- NOTES: UNLESS OTHERWISE SPECIFIED

| LEGEND   | ITEM     | PART NUMBER        | QTY     | DESCRIPTION                              |
|--|----------|--------------------|---------|--|
| ◇  | CRITICAL | MATERIAL           | DRAWN   | WELLS ELECTRONICS<br>SOUTH BEND, INDIANA |
| △  | MAJOR    | SEE TABLE 1        | K.M.    |  |
| ALL OTHERS   | MINOR    | FINISH             | CHECKED | PART NAME<br>14 LEAD FLATPACK<br>CARRIER |
| LAST NUMBER USED WAS : 10  |          | PROL. ENG.         | H0HULIN |  |
| NUMBERS IN CRITICAL & MAJOR DIMENSIONS ARE RANDOMLY PLACED AND HAVE NO SPECIFIC ORDER IN THE WAY THAT THEY HAVE BEEN NUMBERED. |          | DO NOT SCALE       | RALSTIN | PART NO.<br>029-403-0XX                  |
|  |          | TOLERANCES         | T.L.    |  |
|  |          | .XX ± .01(±0.25)   |         | SCALE<br>4X                              |
|  |          | .XXX ± .005(±0.13) |         |  |
|  |          | ANGLE ±1°          |         | SHEET                                    |
|  |          |                    |         | CAD DWG NO.<br>029-403C                  |
|  |          |                    |         | SUB-DIR ON SERVER<br>CARRIERC            |

PART NO.  
029-403-0XX