

| REV. | DATE | BY | ECN No. | REV. | DATE | BY | ECN No. | REV. | DATE | BY | ECN No. |
|------|---------|----|---------|------|---------|----|---------|------|---------|----|---------|
| D | 2-16-89 | KW | 89-0040 | D1 | 8-25-89 | KM | 89-0303 | D2 | 10-7-85 | KM | 95-0613 |

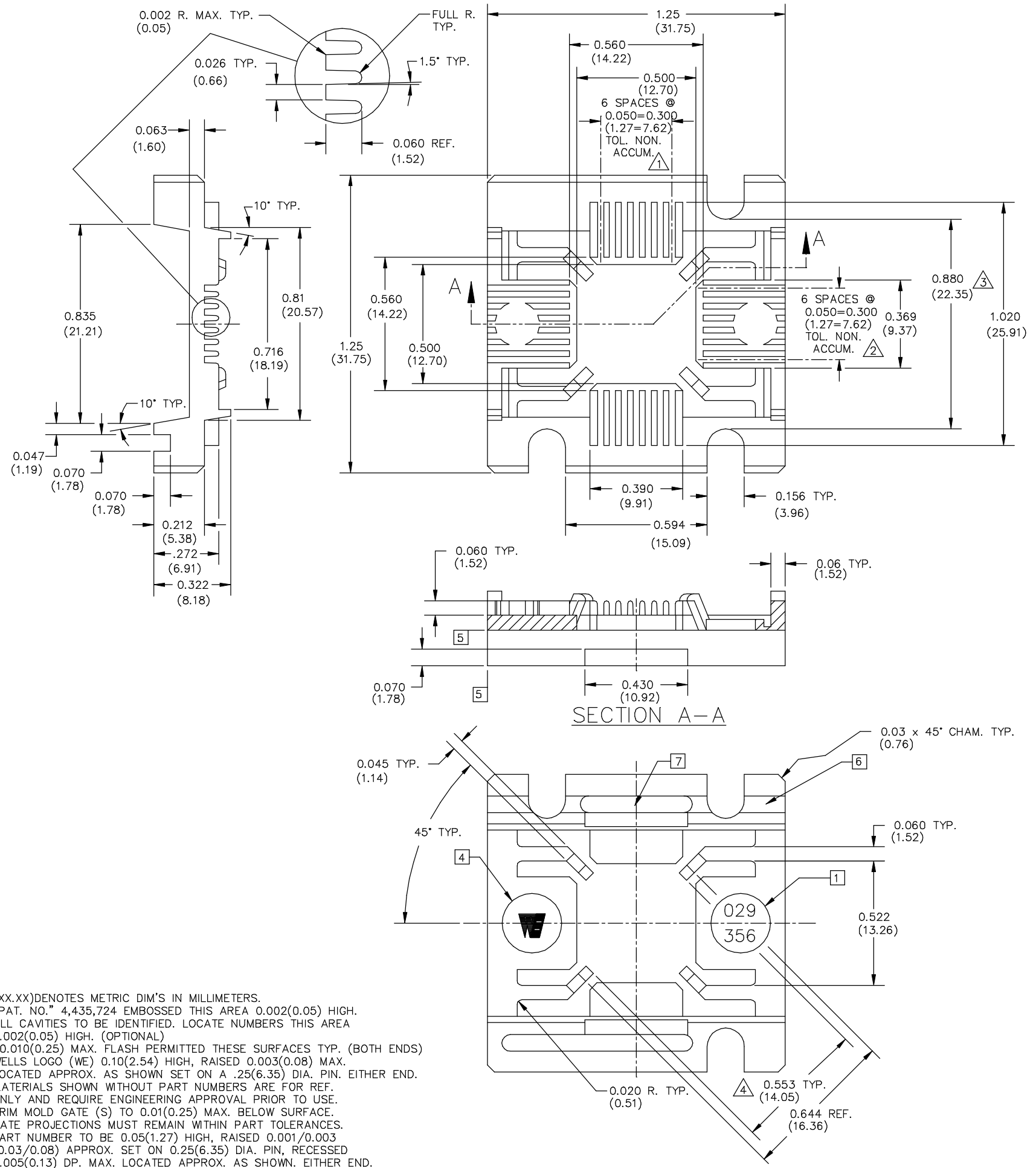


TABLE 1
029-356-0XX

| | | MATERIAL 3 | | | | | | | | |
|-------|--------|--------------|---|---|----------------|------|------------|---|---|---|
| | | 1 | 2 | 3 | 4 | 5 | 6 | 7 | 8 | 9 |
| COLOR | | | | | HIGH TEMP. ESD | ESD | HIGH TEMP. | | | |
| 0 | NAT. | 0211 (BEIGE) | | | | | | | | |
| 1 | PINK | | | | | | 0285 | | | |
| 2 | BLUE | | | | | | | | | |
| 3 | GREEN | | | | | | | | | |
| 4 | BLACK | | | | 0297 | 0282 | | | | |
| 5 | YELLOW | 0290 | | | | | | | | |

CUSTOMER DRAWING

- 8 (XX.XX) DENOTES METRIC DIM'S IN MILLIMETERS.
- 7 "PAT. NO." 4,435,724 EMBOSSED THIS AREA 0.002(0.05) HIGH.
- 6 ALL CAVITIES TO BE IDENTIFIED. LOCATE NUMBERS THIS AREA 0.002(0.05) HIGH. (OPTIONAL)
- 5 0.010(0.25) MAX. FLASH PERMITTED THESE SURFACES TYP. (BOTH ENDS)
- 4 WELLS LOGO (WE) 0.10(2.54) HIGH, RAISED 0.003(0.08) MAX. LOCATED APPROX. AS SHOWN SET ON A .25(6.35) DIA. PIN. EITHER END.
- 3 MATERIALS SHOWN WITHOUT PART NUMBERS ARE FOR REF. ONLY AND REQUIRE ENGINEERING APPROVAL PRIOR TO USE.
- 2 TRIM MOLD GATE (S) TO 0.01(0.25) MAX. BELOW SURFACE. GATE PROJECTIONS MUST REMAIN WITHIN PART TOLERANCES.
- 1 PART NUMBER TO BE 0.05(1.27) HIGH, RAISED 0.001/0.003 (0.03/0.08) APPROX. SET ON 0.25(6.35) DIA. PIN, RECESSED 0.005(0.13) DP. MAX. LOCATED APPROX. AS SHOWN. EITHER END.

| LEGEND | ITEM | PART NUMBER | QTY | DESCRIPTION |
|--------|--|--|-----|---|
| ◇ | CRITICAL | | | WELLS ELECTRONICS SOUTH BEND, INDIANA PART NAME: 28 LEAD QUAD-PACK ONE-PIECE CARRIER PART NO. 029-356-0XX REV. D2 SCALE: 4X SHEET: 029-356C SUB-DIR ON SERVER CARRIER/ |
| △ | MAJOR | | | |
| | ALL OTHERS | MINOR | | |
| | LAST NUMBER USED WAS : 4 | | | |
| | NUMBERS IN CRITICAL & MAJOR DIMENSIONS ARE RANDOMLY PLACED AND HAVE NO SPECIFIC ORDER IN THE WAY THAT THEY HAVE BEEN NUMBERED. | | | |
| | | TABLE 1 | | |
| | | DO NOT SCALE | | |
| | | TOLERANCES .XX ± .01(±0.25) .XXX ± .006(±0.15) .XXXX ± .001(±0.025) ANGLE ± 1° | | |
| | | DATE: 2-16-89 | | |
| | | DATE: 2-20-89 | | |
| | | DATE: 2-20-89 | | |
| | | DATE: 2-27-89 | | |
| | | DATE: 2-27-89 | | |
| | | DATE: 3-17-89 | | |

PART NO. 029-356-0XX