

Property of  
Sensata Technologies

REV.	DATE	BY	REVISION
A	11-7-90	GS	INC. ECN #90-0542 REVISED & REPLOTED
A1	7-1-92	CR	INC. ECN #92-0360 REVISED & REPLOTED

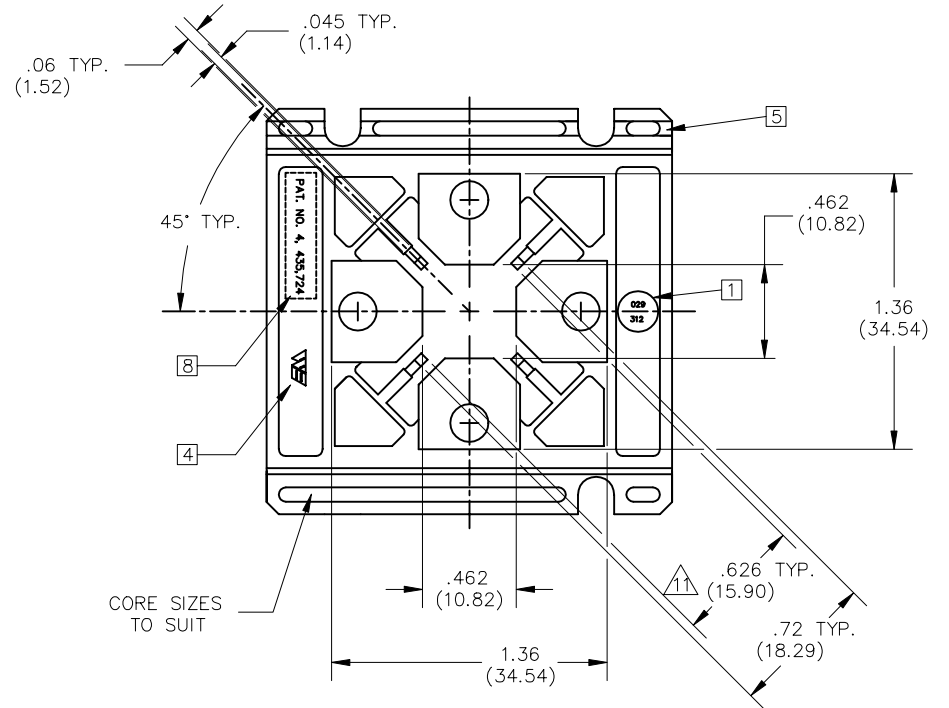
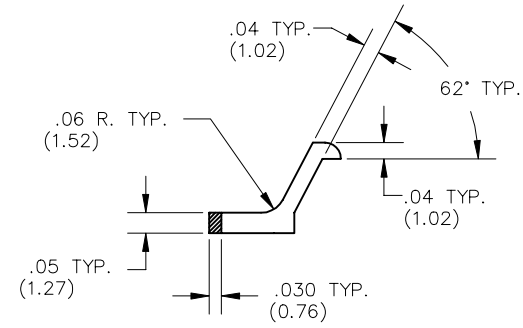
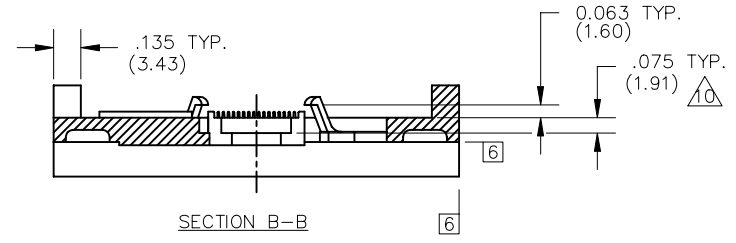
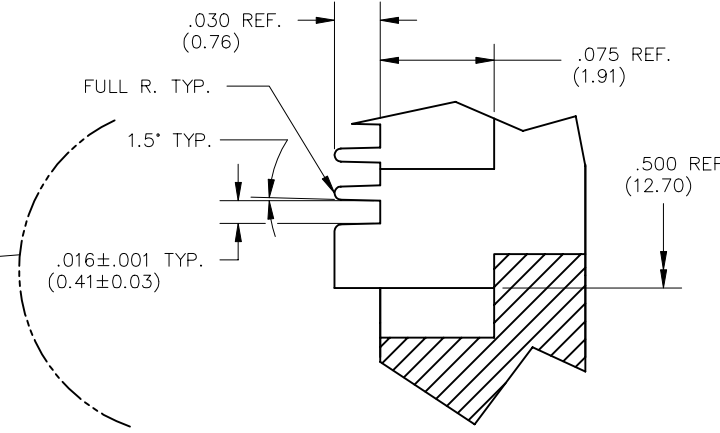
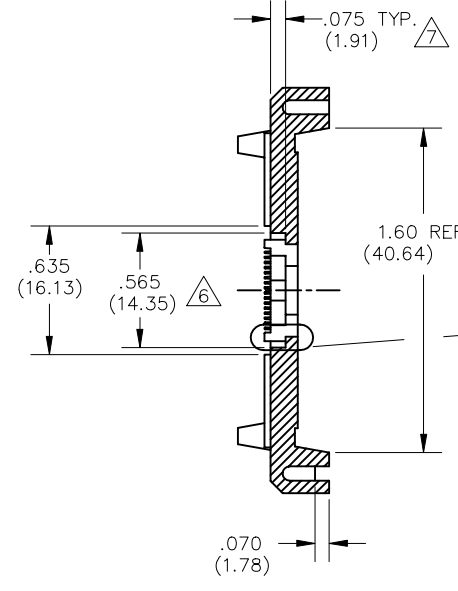
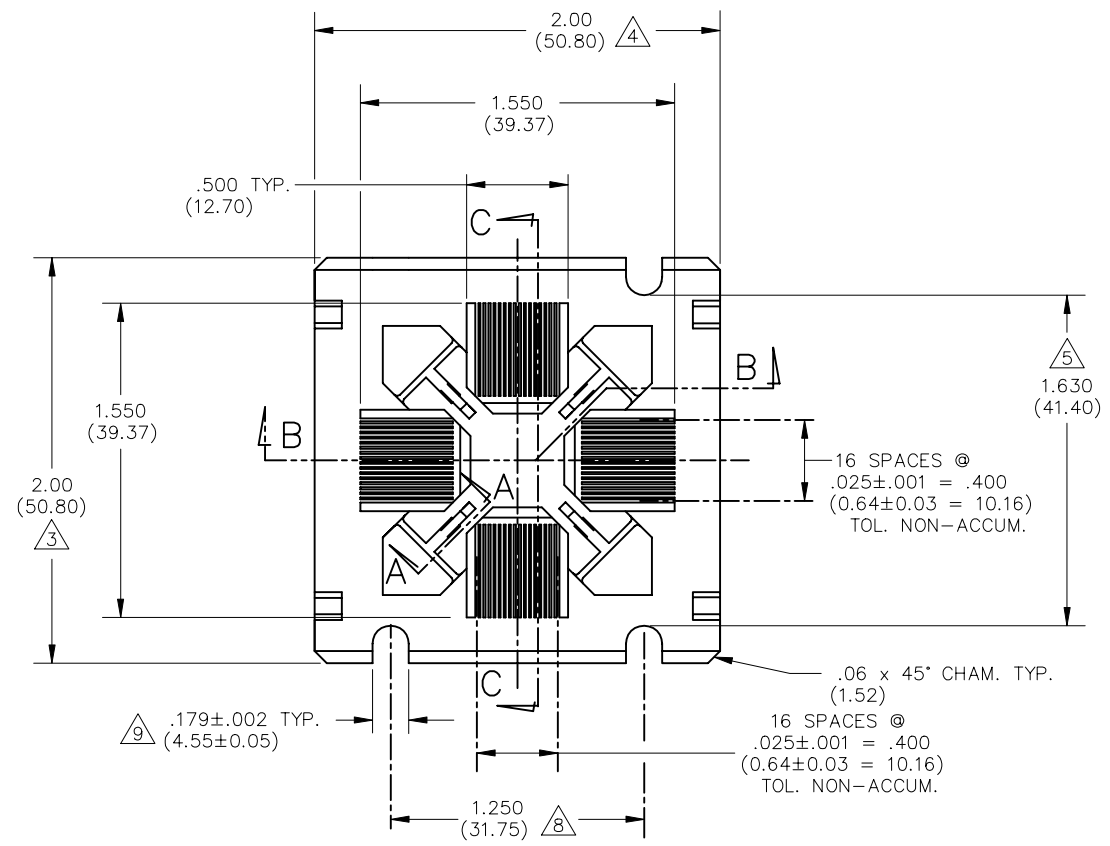
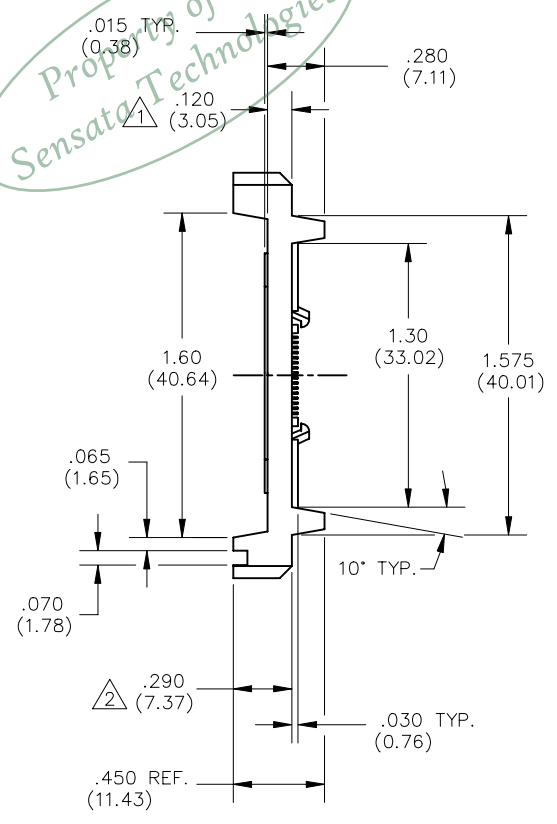


TABLE 1  
029-312-0XX

	MATERIAL [3]								
	1	2	3	4	5	6	7	8	9
COLOR	PSO	PBT	PPS	HI TEMP ESD	ESD	HI TEMP			
0	NAT.	0211				0285			
1	PINK								
2	BLUE								
3	GREEN								
4	BLACK								

CUSTOMER DRAWING

- [8] PAT. NO. (4,435,724) EMBOSSED THIS SURFACE, EITHER END.
- [7] (XX.XX) DENOTES METRIC DIMENSIONS IN MILLIMETERS.
- [6] .010 (0.25) MAX. FLASH PERMITTED THESE SURFACES (TYP. BOTH ENDS)
- [5] MULTI-CAVITY MOLDS MUST HAVE ALL CAVITIES IDENTIFIED. LOCATE NUMBERS THIS AREA . SIZE TO FIT.
- [4] WELLS LOGO (WE) .01 (0.25) HIGH RAISED .003 (0.08) MAX. LOCATE APPROX. AS SHOWN [SET ON .20 (5.08) DIA. PIN OPTIONAL.] EITHER END.
- [3] MATERIALS SHOWN WITHOUT PART NUMBERS ARE FOR REF. ONLY AND REQUIRE ENGINEERING APPROVAL PRIOR TO USE.
- [2] PARTS TO BE MOLDED IN ACCORDANCE TO WELLS SPECIFICATION #QCP-12.
- [1] PART NUMBER TO BE .05 (1.27) HIGH, RAISED .001/.003 (0.03/0.08) APPROX. [SET ON A .20 (5.08) DIA. PIN RECESSED .005 (0.13) DEEP MAX. OPTIONAL] LOCATE APPROX. AS SHOWN, EITHER END.

NOTES: UNLESS OTHERWISE SPECIFIED

LEGEND	ITEM	PART NUMBER	QTY	DESCRIPTION
◇	CRITICAL	SEE TABLE 1	7-19-90	WELLS ELECTRONICS SOUTH BEND, INDIANA
△	MAJOR			
ALL OTHERS	MINOR	DO NOT SCALE		
LAST NUMBER USED WAS : 11		TOLERANCES .XX±.01(±0.25) .XXX±.006(±0.15) .XXXX±.001(±0.025)		
NUMBERS IN CRITICAL & MAJOR DIMENSIONS ARE RANDOMLY PLACED AND HAVE NO SPECIFIC ORDER IN THE WAY THAT THEY HAVE BEEN NUMBERED.		ANGLE ±1°		

PART NO.  
029-312-0XX