

REV.	DATE	BY	REVISION				
A1	3-24-92	CR	INC. ECN #92-0241 REVISED & REPLOTTED				
A2	10-19-92	KM	INC. ECN #92-0551 REVISED & REPLOTTED				
B	4-24-93	CR	INC. ECN #93-0156 REVISED & REPLOTTED				
REV.	ECN #	REV.	ECN #	REV.	ECN #	REV.	ECN #
A	90-0244						

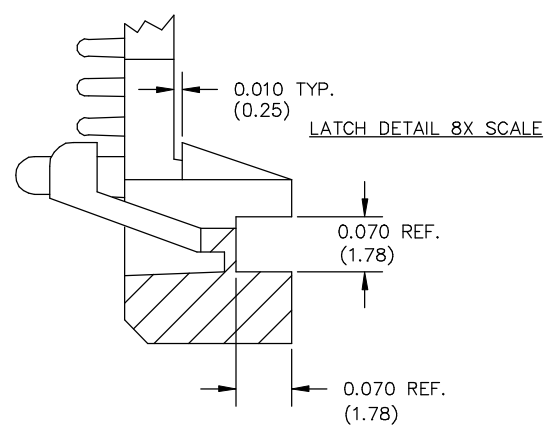
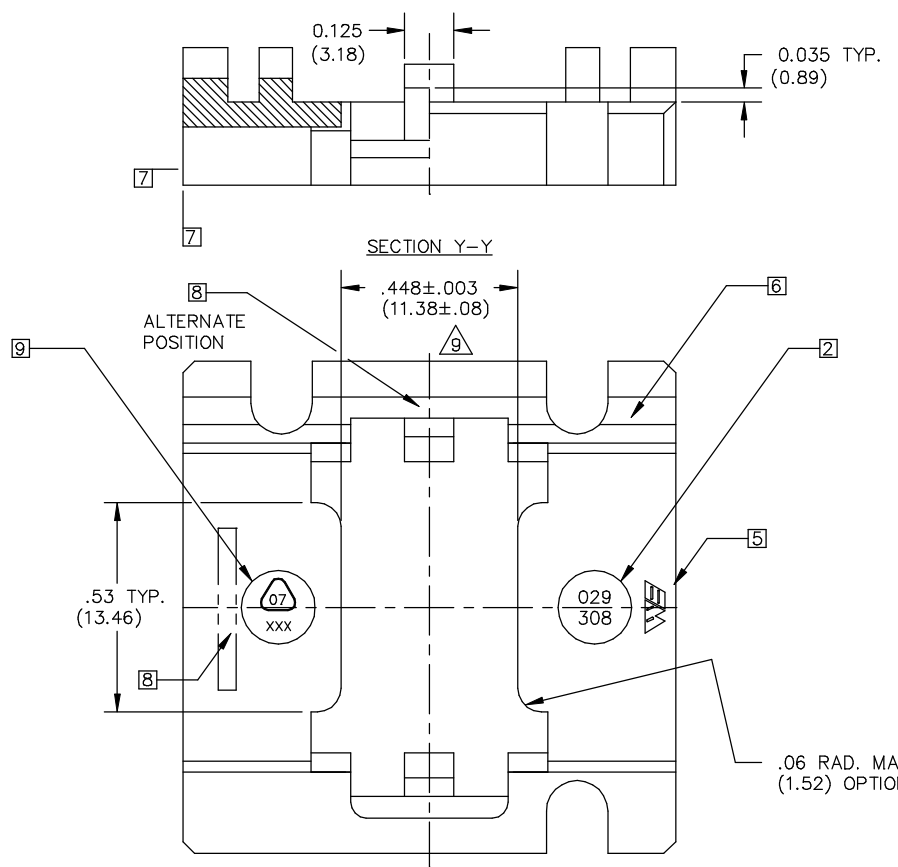
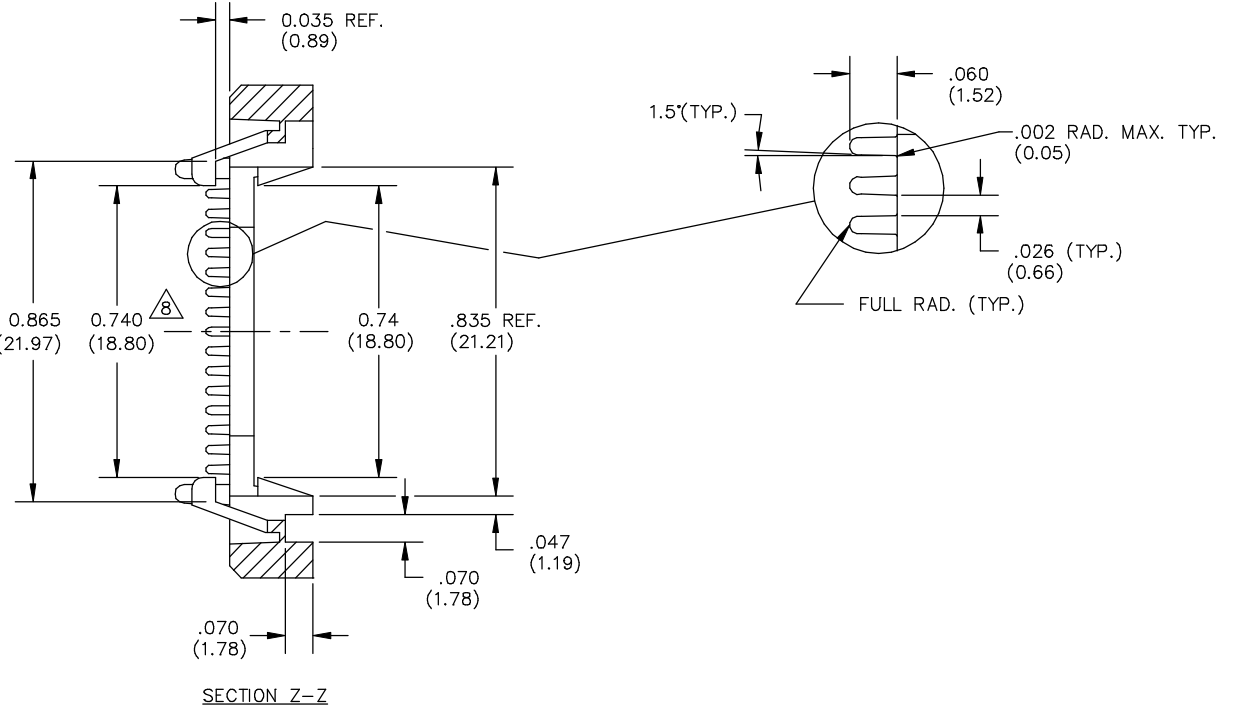
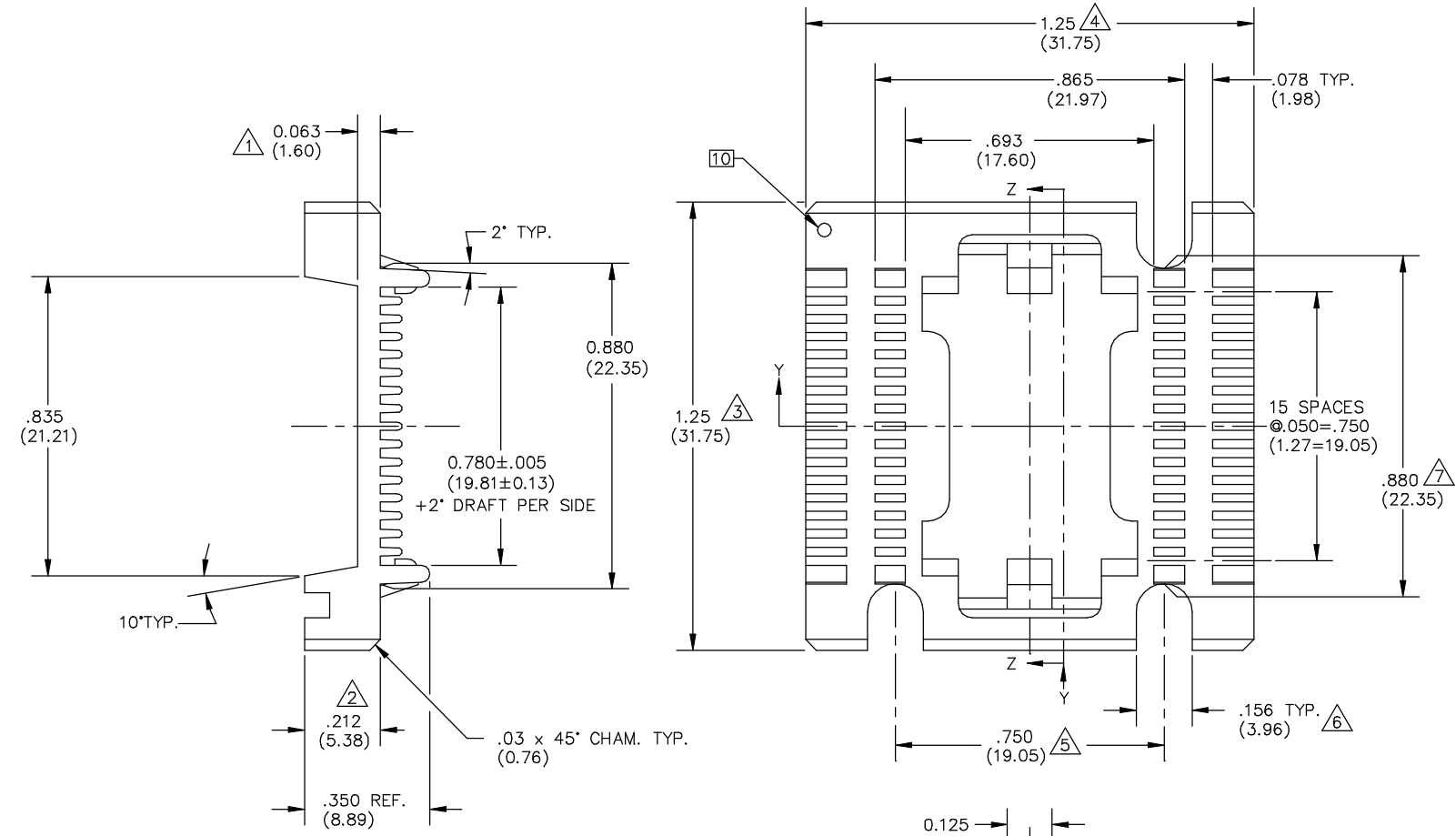


TABLE 1
029-308-0XX

COLOR	MATERIAL [3]								
	1	2	3	4	5	6	7	8	9
0 NAT.	PSO	PBT	PPS	HI TEMP ESD	ESD	HI TEMP			
1 PINK					0285				
2 BLUE									
3 GREEN									
4 BLACK				0297	0282				

- 10 DRAWING REVISION LEVEL TO BE LOCATED APPROXIMATELY AS SHOWN.
- 9 RECYCLE SYMBOL PER WELLS SPEC. ES7 SIZE AND LOCATION TO FIT.
- 8 PAT. NUMBER 4,435,724 EMBOSSED APPROX. THIS AREA TO FIT.
- 7 .010(0.25) MAX. FLASH PERMITTED THESE SURFACES. (TYP. BOTH ENDS)
- 6 MULTI-CAVITY MOLDS MUST HAVE ALL CAVITIES IDENTIFIED. LOCATE NUMBERS THIS AREA. SIZE TO FIT.
- 5 WELLS LOGO .10(2.54) HIGH, RAISED .003(0.08) MAX. LOCATE APPROX AS SHOWN SET ON .187(4.75) DIA. PIN. (OPTIONAL)
- 4 MATL'S SHOWN WITHOUT PART NUMBERS ARE FOR REF. ONLY AND REQUIRE ENGINEERING APPROVAL PRIOR TO USE.
- 3 PARTS TO BE MOLDED IN ACCORDANCE TO WELLS ELECTRONICS SPECIFICATION #QCP-12.
- 2 PART NUMBER TO BE .05(1.27) HIGH, RAISED .001/.003(0.03/0.08) APPROX. SET ON .187(4.75) DIA. PIN RECESSED .005(0.13) DEEP MAX. LOCATE APPROX. AS SHOWN.
- 1 (XX.XX) DENOTES METRIC DIM'S IN MILLIMETERS

NOTES: UNLESS OTHERWISE SPECIFIED

LEGEND		ITEM	PART NUMBER	QTY	DESCRIPTION
◇	CRITICAL	THIS DOCUMENT CONTAINS PROPRIETARY DESIGNS, SPECIFICATIONS, DATA, INFORMATION AND TECHNICAL MATERIAL THAT ARE THE SOLE PROPERTY OF WELLS ELECTRONIC, INC. THIS INFORMATION IS TO BE HELD AND TREATED BY ITS RECIPIENT ON A CONFIDENTIAL BASIS, AND IS NOT TO BE SHOWN OR DISCLOSED TO THIRD PARTIES WITHOUT THE WRITTEN CONSENT OF WELLS ELECTRONICS, INC. THIS DATA DOES NOT CONVEY MANUFACTURING RIGHTS TO ANY ITEM SHOWN.	MATERIAL SEE TABLE 1	DRAWN KEN M. DATE 2-16-90	WELLS ELECTRONICS SOUTH BEND, INDIANA
△	MAJOR		FINISH	CHECKED HOHULIN DATE 2-20-90	PART NAME 32 LEAD ONE-PIECE CARRIER
	ALL OTHERS			PROJ. ENGR. RALSTIN DATE 2-22-90	PART NO. 029-308-0XX
				LAST NUMBER USED WAS : 9	REV. B
				DO NOT SCALE	
				CHIEF ENGR. T.L. DATE 2-21-90	
				MFG. ENGR. DATE ---	SCALE 4X
				QUALITY DATE ---	SHEET 029-308C
				TOLERANCES .XX±.01(±0.25) .XXX±.006(±0.15) .XXXX----- ANGLE ±1°	SUB-DIR ON SERVER CARRIERC\

CUSTOMER DRAWING

PART NO.
029-308-0XX