

REV.	DATE	BY	ECN No.	REV.	DATE	BY	ECN No.	REV.	DATE	BY	ECN No.
R	1-27-89	KF	89-0026	R1	3-29-93	RB	93-0117	R2	7-6-94	CP	94-0479
R3	4-24-95	CP	95-0193								

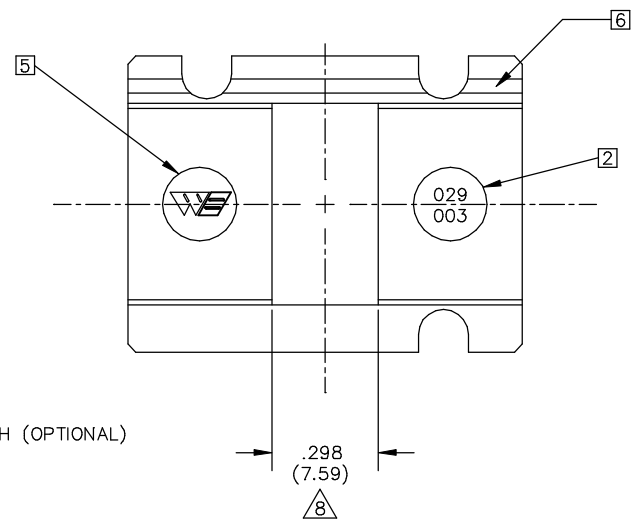
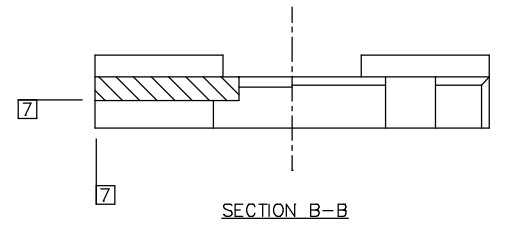
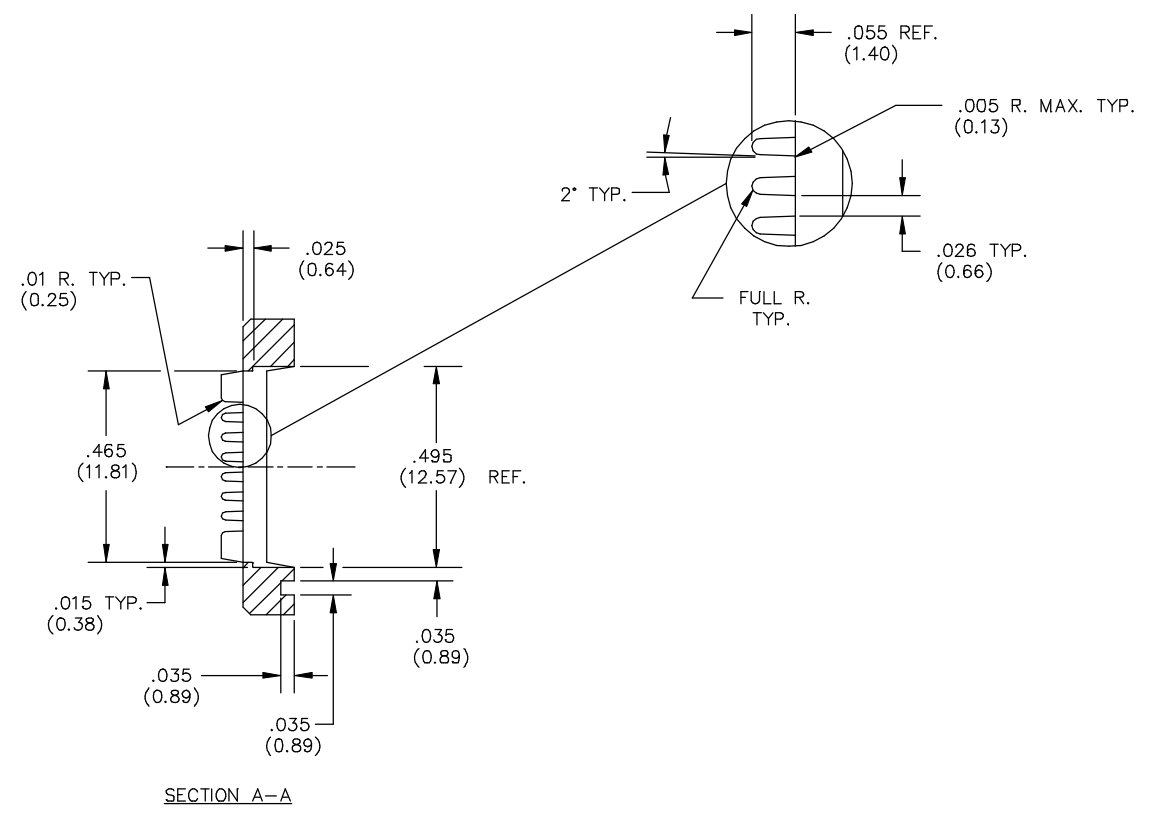
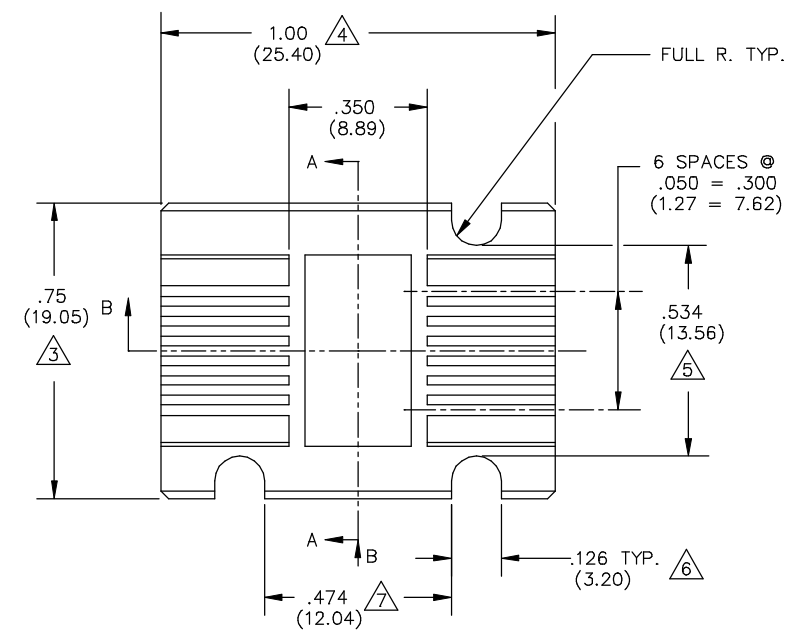
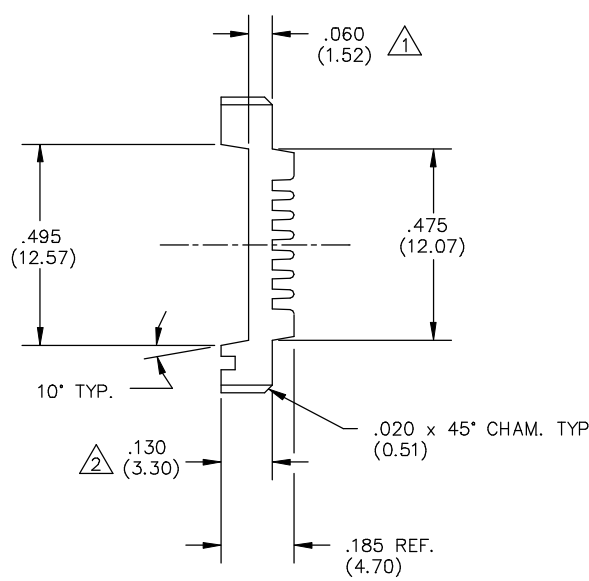


TABLE 1
029-003-OXX

	MATERIAL [4]								
	1	2	3	4	5	6	7	8	9
COLOR	POLYSULFONE	POLYESTER	PPS	HI TEMP ESD	ESD	HIGH TEMP.			
0 NAT	0211 (BEIGE)	0226 (BEIGE)	0246 (BROWN)						
1 PINK						0285			
2 BLUE									
3 GREEN									
4 BLACK				0297					

- 8 (XX.XX) DENOTES METRIC DIM'S IN MILLIMETERS
- 7 .010(0.25) MAX. FLASH PERMITTED THESE SURFACES (TYP. BOTH ENDS)
- 6 ALL CAVITIES TO BE IDENTIFIED. LOCATE NUMBERS THIS AREA .002(0.05) HIGH (OPTIONAL)
- 5 WELLS LOGO .10(2.54) HIGH, RAISED .003(0.08) MAX. LOCATE APPROX. AS SHOWN, SET ON .20(5.08) DIA. PIN. OPTIONAL (EITHER END)
- 4 MATERIALS SHOWN WITHOUT PART NUMBERS ARE FOR REF. ONLY AND REQUIRE ENGINEERING APPROVAL PRIOR TO USE
- 3 GATE LOCATION OPTIONAL. GATE AREA TO BE FLUSH TO .01(0.25) MAX. BELOW SURROUNDING SURFACE. DIMENSIONS OF GATE RECESS (IF ANY) OPTIONAL. ANY GATE PROJECTION TO BE TRIMMED WITHIN PART OVERALL ENVELOPE TOLERANCE
- 2 PART NUMBER TO BE .05(1.27) HIGH, RAISED .001/.003(0.03/0.08) APPROX. SET ON .20(5.08) DIA. PIN RECESSED .003(0.08) DP. MAX. LOCATE APPROX. AS SHOWN
- 1 USE RETENTION CLIP 039-566-XXX (FOR REF. ONLY)

LEGEND	ITEM	PART NUMBER	QTY	DESCRIPTION
◇	CRITICAL			
△	MAJOR			
	ALL OTHERS	MINOR		
	LAST NUMBER USED	WAS : 8		
NUMBERS IN CRITICAL & MAJOR DIMENSIONS ARE RANDOMLY PLACED AND HAVE NO SPECIFIC ORDER IN THE WAY THAT THEY HAVE BEEN NUMBERED.		MATERIAL SEE TABLE 1	DRAWN FULMER DATE 1-27-89	PART NAME 14 LEAD FLATPACK CARRIER
		FINISH DO NOT SCALE	CHECKED HOHULIN DATE 2-08-89	PART NO. 029-003-OXX
		TOLERANCES .XX ±.01<±0.25> .XXX ±.005<±0.13> .XXXX ±.001<±0.025> ANGLE ±1°	PRD. ENG. RALSTIN DATE 2-08-89	REV. R3
		QUALITY ---	MFG. ENG. D.S. DATE 2-08-89	SCALE 4X
			DATE ---	SUB-DIR ON SERVER CARRIERC

CUSTOMER DRAWING

PART NO. 029-003-OXX